

Product Sheet

H_CD44s CHO-K1 Cell Line

Catalog number: GM-C42555

Version 3.3.1.260602

Description	H_CD44s CHO-K1 Cell Line is a clonal stable CHO-K1 cell line that constitutively expresses the human CD44s gene, constructed using lentiviral technology.
Quantity	5E6 Cells per vial, 1 mL
Product Format	1 vial of frozen cells
Shipping	Shipped on dry ice
Storage Conditions	Liquid nitrogen immediately upon receipt
Target	H_CD44s
Gene ID/Uniprot ID	NP_001001391.1
Host Cell	CHO-K1
Recovery Medium	F12K+10% FBS+1% P.S
Growth medium	F12K+10% FBS+1% P.S+4 µg/mL Puromycin
Note	None
Freezing Medium	90% FBS+10% DMSO
Growth properties	Adherent
Growth Conditions	37°C, 5% CO ₂
Mycoplasma Testing	The cell line has been screened to confirm the absence of Mycoplasma species.
Safety considerations	Biosafety Level 2
Note	It is recommended to expand the cell culture and store a minimum of 10 vials at an early passage for potential future use.

Materials

Reagent	Manufacturer/Catalogue No.
F12K	BOSTER/PYG0036
Fetal Bovine Serum	ExCell/FSP500
Pen/Strep	Thermo/15140-122
Puromycin	Genomeditech/GM-040401
Purified anti-human CD44 Antibody	Biolegend/397502
Anti-CD44v6 hIgG1 Antibody(bivatuzumab)	Genomeditech/GM-87692AB

Figures

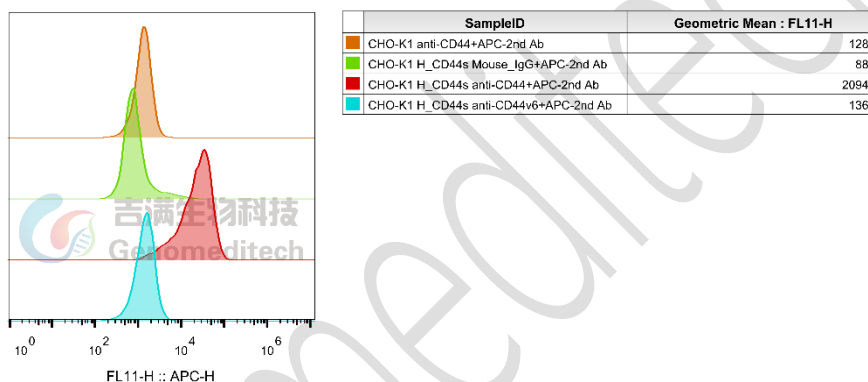


Figure 1 | H_CD44s CHO-K1 Cell Line (Cat. GM-C42555) was determined by flow cytometry using Purified anti-human CD44 Antibody (Biolegend/397502) and Anti-CD44v6 hIgG1 Antibody(bivatuzumab) (Cat. GM-87692AB).

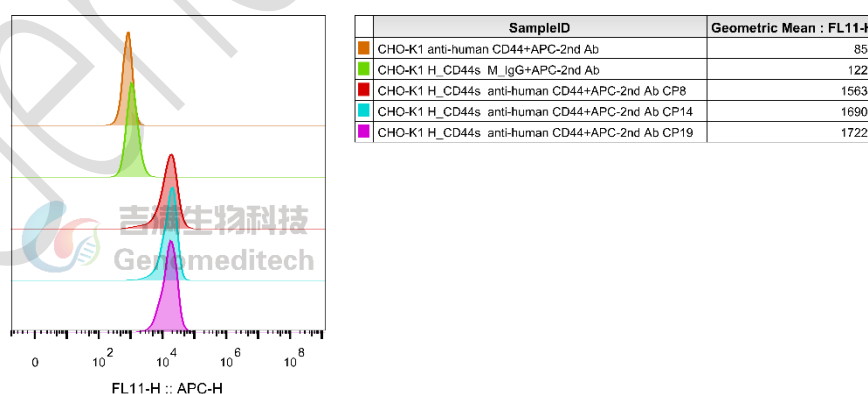


Figure 2 | The passage stability of the H_CD44s CHO-K1 Cell Line (Cat. GM-C42555) was determined by flow cytometry using Purified anti-human CD44 Antibody (Biolegend/397502)

Cell Recovery

Recovery Medium: F12K+10% FBS+1% P.S

To insure the highest level of viability, thaw the vial and initiate the culture as soon as possible upon receipt. If upon arrival, continued storage of the frozen culture is necessary, it should be stored in liquid nitrogen vapor phase and not at -70°C . Storage at -70°C will result in loss of viability.

- a) Thaw the vial by gentle agitation in a 37°C water bath. To reduce the possibility of contamination, keep the O-ring and cap out of the water. Thawing should be rapid (approximately 2 - 3 minutes).
- b) Remove the vial from the water bath as soon as the contents are thawed, and decontaminate by dipping in or spraying with 70% ethanol. All of the operations from this point on should be carried out under strict aseptic conditions.
- c) Transfer the vial contents to a centrifuge tube containing 5.0 mL complete culture medium and spin at approximately $176 \times g$ for 5 minutes. Discard supernatant.
- d) Resuspend cell pellet with the recommended recovery medium. And dispense into appropriate culture dishes.
- e) Incubate the culture at 37°C in a suitable incubator. A 5% CO_2 in air atmosphere is recommended if using the medium described on this product sheet.

Cell Freezing

Freezing Medium: 90% FBS+10% DMSO

- a) Centrifuge at $176 \times g$ for 3 minutes to collect cells.
- b) Resuspend the cells in pre-cooled freezing medium and adjust the cell density to 5×10^6 cells/mL.
- c) Aliquot 1 mL into each vial.
- d) Place the vial in a controlled-rate freezing container and store at -80°C for at least 1 day, then transfer to liquid nitrogen as soon as possible.

Cell passage

Growth medium: F12K+10% FBS+1% P.S+4 $\mu\text{g}/\text{mL}$ Puromycin

For the first 1 to 2 passages post-resuscitation, use the recovery medium. Once the cells have stabilized, switch to a growth medium.

- a) Remove and discard culture medium.
- b) Briefly rinse the cell layer with PBS to remove all traces of serum that contains trypsin inhibitor.
- c) Add 1.0 mL of 0.25% (w/v) Trypsin-EDTA solution to dish and observe cells under an inverted microscope until cell layer is dispersed (usually within 2 to 3 minutes at 37°C).
- d) Note: To avoid clumping do not agitate the cells by hitting or shaking the flask while waiting for the cells to detach. Cells that are difficult to detach may be placed at 37°C to facilitate dispersal.
- e) Add 2.0 mL of growth medium to mix well and aspirate cells by gently pipetting.
- f) After centrifugation, resuspend the pellet and add appropriate aliquots of the cell suspension to new culture vessels.
- g) Incubate cultures at 37°C .

Subcultivation Ratio: A subcultivation ratio of 1:4 - 1:5 is recommended

Medium Renewal: Every 2 to 3 days

Notes

- a) After the stabilization of the cell condition, there will be fewer dead cells post-passage, the cell growth rate will tend to stabilize, cell morphology will become uniform, and the cells will appear robust.

Sequence

CD44s [NP_001001391.1](#)

MDKFWWHAAWGLCLVPLSLAQIDLNITCRFAGVFHVEKNGRYSISRTEAADLCKAFNSTLPTMAQMEKALS
IGFETCRYGFIEGHVVIPRIHPNSICAAANTGVYILTSNTS QYD TYCFNASAPPEEDCTSVTDLPNAFDGPITITIV
NRDGTRYVQKGEYRTNPEDIYPSNPTDDDVSSGSSSERSTSGGYIFYTFSTVHPIPEDSPWITDSTDRIPATR
DQDTFHPSGGSHHTHGSSESDGSHSHGSQEGGANTTSGPIRTPQIPEWLILASLLALALILAVCIAVNSRRRCGQK
KKLVINSNGA VEDRKPSGLNGEASKSQEMVHLVNKESSETPDQFMTADETRNLQNVD MKIGV

Related Products

CLDN18	
Cynomolgus_CLDN18.2-eGFP CHO-K1 Cell Line	H_CLDN18(isoform2)-eGFP 293 Cell Line
H_CLDN18.1-eGFP HEK-293 Cell Line	H_CLDN18.2 MC38 Cell Line
H_CLDN18.2 MKN45 Cell Line(High Expression)	H_CLDN18.2 MKN45 Cell Line(Low Expression)
H_CLDN18.2 MKN45 Cell Line(Medium Expression)	H_CLDN18.2(isoform2) CHO-K1 Cell Line
H_CLDN18.2-eGFP CT-26 Cell Line	Mouse_CLDN18.2-eGFP CHO-K1 Cell Line
Rat_CLDN18.2-eGFP CHO-K1 Cell Line	Rhesus_CLDN18.2-eGFP CHO-K1 Cell Line
Anti-CLDN18.2 hIgG1 Reference Antibody (IMAB362)	Anti-CLDN18.2 hIgG1 Antibody(LM-102)
Anti-CLDN18.2 hIgG1 Antibody(Zolbetuximab)	
TROP2(TACSTD2)	
Cynomolgus_Trop2 CHO-K1 Cell Line	Cynomolgus_TROP2 HEK-293 Cell Line
H_TROP2 CHO-K1 Cell Line	H_TROP2 CT26 Cell Line
H_TROP2 HEK-293 Cell Line	H_TROP2 LLC1 Cell Line
Anti-H_TROP2 hIgG1 Antibody(Datopotamab)	Anti-TROP2 hIgG1 Antibody(Hu2G10-5)
Anti-Trop2 hIgG1 Reference Antibody (Sacbio)	Anti-Trop2 hIgG1 Reference Antibody(Datbio)
Anti-Trop2-DXD ADC(Dar4)[Datopotamab deruxtecán,Dato-DXD]	Anti-Trop2-SN38 ADC(Dar8)[Sacituzumab govitecan]
Biotinylated Cynomolgus TROP2 Protein; His-Avi Tag	Biotinylated Human TROP2 Protein; His-Avi Tag
Human TROP2 Protein; His Tag	
GUCY2C(GC-C)	
Cynomolgus_GUCY2C HEK-293 Cell Line	H_GUCY2C CHO-K1 Cell Line
H_GUCY2C HEK-293 Cell Line	
Anti-H_GUCY2C hIgG1 Antibody(Indusatumab)	
Human GUCY2C Protein; His Tag	

FGFR2	
H_FGFR2b Reporter 293 Cell Line	Cynomolgus_FGFR2b HEK-293 Cell Line
H_FGFR2b CHO-K1 Cell Line	H_FGFR2b HEK-293 Cell Line
Mouse_FGFR2b HEK-293 Cell Line	
Anti-FGFR2 hIgG1 Antibody(hFR2-14_H12-L1)	Anti-FGFR2 hIgG1 Referece Antibody (Bemabio)
Cynomolgus FGFR2(IIIb) D1-D3 Protein; His Tag	Human FGFR2(IIIb) D1-D3 Protein; hFc Tag
Human FGFR2(IIIb) D2-D3 Protein; hFc Tag	Human FGFR2(IIIb) D2-D3 Protein; His Tag
Human FGFR2(IIIc) D1-D3 Protein; His Tag	Mouse FGFR2(IIIb) D2-D3 Protein; His Tag
CD44	
H_CD44v6 CHO-K1 Cell Line	H_CD44v6 CHO-K1 Cell Line (Medium Expression)
H_CD44v6 HEK-293 Cell Line	
Anti-CD44v6 hIgG1 Antibody(bivatuzumab)	
ADC Related Product	
Anti-DXD Mouse IgG1 Antibody (23E21C5)	Anti-DXD Mouse IgG1 Antibody (4A5A12)
Anti-Dxd Mouse IgG2a Antibody (17D6A4)	Anti-Eribulin Mouse IgG2a Antibody (10F8G4)
Anti-MMAE Mouse IgG1 Antibody (11C10E3)	Anti-MMAE Mouse IgG2a Antibody (17A1K11)
Anti-MMAE Mouse IgG2a Antibody (8F6A3)	Anti-SN38 Mouse IgG1 Antibody(59H11C7)
Mouse anti Human IgG1-DXD(Dar8)	Mouse anti Human IgG1-MMAE(Dar4)
Human IgG1 Isotype-DXD (Dar8)	Human IgG1 Isotype-Eribulin (Dar4)
Human IgG1 Isotype-MMAE (Dar4)	
Recombinant DT3C Protein	

License Agreement:

By purchasing and using this cell line product, the user voluntarily agrees to accept and abide by the following policies:

- This cell line product is restricted to research use only and shall not be used for any commercial purposes.
- This product is strictly prohibited from being used in the diagnosis or treatment of human or animal diseases, and shall not be directly used in experiments involving humans.
- Users and their contractors engaged for their benefit may use this material and its derivatives only within the agreed research scope; modification of the material is not permitted, nor may it be distributed, sold, transferred, or otherwise provided to any other entity (including affiliates).
- If use beyond the above scope is required, prior written permission from Genomeditech (Shanghai) Co.,Ltd. must be obtained. For details, please contact Genomeditech (Shanghai) Co.,Ltd.