

# Product Sheet

## Mouse\_CLDN18.2-eGFP CHO-K1 Cell Line

Catalog number: GM-C09557

Version 3.3.1.260422

<b>Description</b>	Mouse_CLDN18.2-eGFP CHO-K1 Cell Line is a clonal stable CHO-K1 cell line constitutively expressing mouse CLDN18.2-eGFP.
<b>Quantity</b>	5E6 Cells per vial,1 mL
<b>Product Format</b>	1 vial of frozen cells
<b>Shipping</b>	Shipped on dry ice
<b>Storage Conditions</b>	Liquid nitrogen immediately upon receipt
<b>Target</b>	Mouse_CLDN18.2 & C-eGFP
<b>Gene ID/Uniprot ID</b>	NP_001181850.1
<b>Host Cell</b>	CHO-K1
<b>Recovery Medium</b>	F12K+10% FBS+1% P.S
<b>Growth medium</b>	F12K+10% FBS+1% P.S+4 µg/mL Puromycin
<b>Note</b>	None
<b>Freezing Medium</b>	90% FBS+10% DMSO
<b>Growth properties</b>	Adherent
<b>Growth Conditions</b>	37°C, 5% CO <sub>2</sub>
<b>Mycoplasma Testing</b>	The cell line has been screened to confirm the absence of Mycoplasma species.
<b>Safety considerations</b>	Biosafety Level 2
<b>Note</b>	It is recommended to expand the cell culture and store a minimum of 10 vials at an early passage for potential future use.

## Materials

Reagent	Manufacturer/Catalogue No.
F12K	BOSTER/PYG0036
Fetal Bovine Serum	ExCell/FSP500
Pen/Strep	Thermo/15140-122
Puromycin	Genomeditech/GM-040401
Anti-CLDN18.2 hIgG1 Antibody(Zolbetuximab)	Genomeditech/GM-34137AB

## Figures

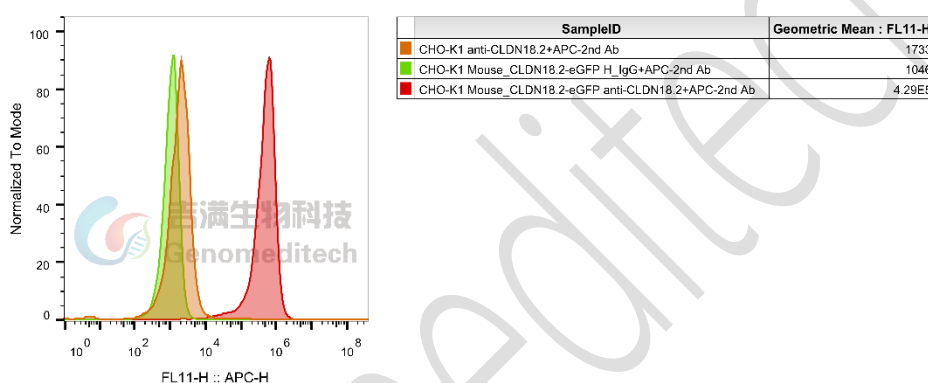


Figure 1 | Mouse\_CLDN18.2-eGFP CHO-K1 Cell Line (Cat. GM-C09557) was determined by flow cytometry using Anti-CLDN18.2 hIgG1 Antibody(Zolbetuximab) (Cat. [GM-34137AB](#)).

## Cell Recovery

Recovery Medium: F12K+10% FBS+1% P.S

To insure the highest level of viability, thaw the vial and initiate the culture as soon as possible upon receipt. If upon arrival, continued storage of the frozen culture is necessary, it should be stored in liquid nitrogen vapor phase and not at -70°C. Storage at -70°C will result in loss of viability.

- Thaw the vial by gentle agitation in a 37°C water bath. To reduce the possibility of contamination, keep the O-ring and cap out of the water. Thawing should be rapid (approximately 2 - 3 minutes).
- Remove the vial from the water bath as soon as the contents are thawed, and decontaminate by dipping in or spraying with 70% ethanol. All of the operations from this point on should be carried out under strict aseptic conditions.
- Transfer the vial contents to a centrifuge tube containing 5.0 mL complete culture medium and spin at approximately 176 x g for 5 minutes. Discard supernatant.
- Resuspend cell pellet with the recommended recovery medium. And dispense into appropriate culture dishes.

- e) Incubate the culture at 37°C in a suitable incubator. A 5% CO<sub>2</sub> in air atmosphere is recommended if using the medium described on this product sheet.

## Cell Freezing

Freezing Medium: 90% FBS+10% DMSO

- Centrifuge at 176 x g for 3 minutes to collect cells.
- Resuspend the cells in pre-cooled freezing medium and adjust the cell density to 5E6 cells/mL.
- Aliquot 1 mL into each vial.
- Place the vial in a controlled-rate freezing container and store at -80°C for at least 1 day, then transfer to liquid nitrogen as soon as possible.

## Cell passage

Growth medium: F12K+10% FBS+1% P.S+4 µg/mL Puromycin

For the first 1 to 2 passages post-resuscitation, use the recovery medium. Once the cells have stabilized, switch to a growth medium.

- Remove and discard culture medium.
- Briefly rinse the cell layer with PBS to remove all traces of serum that contains trypsin inhibitor.
- Add 1.0 mL of 0.25% (w/v) Trypsin-EDTA solution to dish and observe cells under an inverted microscope until cell layer is dispersed (usually within 2 to 3 minutes at 37°C).
- Note: To avoid clumping do not agitate the cells by hitting or shaking the flask while waiting for the cells to detach. Cells that are difficult to detach may be placed at 37°C to facilitate dispersal.
- Add 2.0 mL of growth medium to mix well and aspirate cells by gently pipetting.
- After centrifugation, resuspend the pellet and add appropriate aliquots of the cell suspension to new culture vessels.
- Incubate cultures at 37°C.

**Subcultivation Ratio: A subcultivation ratio of 1:4 - 1:5 is recommended**

**Medium Renewal: Every 2 to 3 days**

## Notes

- After the stabilization of the cell condition, there will be fewer dead cells post-passage, the cell growth rate will tend to stabilize, cell morphology will become uniform, and the cells will appear robust.

## Sequence

CLDN18(isoform A2.1) [NP\\_001181850.1](#)

MSVTACQGLGFVVSLLIGFAGIIAATCMDQWSTQDLYNNPVTAVFNYQGLWRSCVRESSGFTECRGYFTLLGL  
PAMLQAVRALMIVGIVLGVIGILVSIFALKCIRIGSMDDSAKAKMTLTSGILFIISGICAIIGVSVFANMLVTNFW  
MSTANMYSGMGMGMGMVQTVQTRYTFGAALFVGWVAGGLTLIGGVMMCIACRGLTPDDSNFKA VSYHAS  
GQNVAYRPGGFKASTGFGSNTRNKKIYDGGARTEDDEQSHPTKYDYV

## Related Products

CLDN18	
Cynomolgus_CLDN18.2-eGFP CHO-K1 Cell Line	H_CLDN18(isoform2)-eGFP 293 Cell Line
H_CLDN18.1-eGFP HEK-293 Cell Line	H_CLDN18.2 MC38 Cell Line
H_CLDN18.2 MKN45 Cell Line(High Expression)	H_CLDN18.2 MKN45 Cell Line(Low Expression)
H_CLDN18.2 MKN45 Cell Line(Medium Expression)	H_CLDN18.2(isoform2) CHO-K1 Cell Line
H_CLDN18.2-eGFP CT-26 Cell Line	Rat_CLDN18.2-eGFP CHO-K1 Cell Line
Rhesus_CLDN18.2-eGFP CHO-K1 Cell Line	
Anti-CLDN18.2 hIgG1 Reference Antibody (IMAB362)	Anti-CLDN18.2 hIgG1 Antibody(LM-102)
Anti-CLDN18.2 hIgG1 Antibody(Zolbetuximab)	
TROP2(TACSTD2)	
Cynomolgus_Trop2 CHO-K1 Cell Line	Cynomolgus_TROP2 HEK-293 Cell Line
H_TROP2 CHO-K1 Cell Line	H_TROP2 CT26 Cell Line
H_TROP2 HEK-293 Cell Line	H_TROP2 LLC1 Cell Line
H_TROP2 MC38 Cell Line	
Anti-H_TROP2 hIgG1 Antibody(Datopotamab)	Anti-TROP2 hIgG1 Antibody(Hu2G10-5)
Anti-Trop2 hIgG1 Reference Antibody (Sacbio)	Anti-Trop2 hIgG1 Reference Antibody(Datbio)
Anti-Trop2-DXD ADC(Dar4)[Datopotamab deruxtecán,Dato-DXD]	Anti-Trop2-SN38 ADC(Dar8)[Sacituzumab govitecan]
Biotinylated Cynomolgus TROP2 Protein; His-Avi Tag	Biotinylated Human TROP2 Protein; His-Avi Tag
Human TROP2 Protein; His Tag	
GUCY2C(GC-C)	
Cynomolgus_GUCY2C HEK-293 Cell Line	H_GUCY2C CHO-K1 Cell Line
H_GUCY2C HEK-293 Cell Line	
Anti-H_GUCY2C hIgG1 Antibody(Indusatumab)	
CD3	
ADCC FcγRIIIa(158V) Reporter Jurkat(CD3 KO) Cell Line	Jurkat CD3-BsAb Reporter Cell Line
Cynomolgus_CD3 HEK-293 Cell Line	Cynomolgus_CD3E(Membrane Bound ECD) CHO-K1 Cell Line
H_CD3 CHO-K1 Cell Line	H_CD3 HEK-293 Cell Line
H_CD3D CD3E KO Jurkat Cell Line	H_CD3E KO Jurkat Cell Line
H_CD3E(Membrane Bound ECD) CHO-K1 Cell Line	H_CD3-TCR HEK-293 Cell Line
Mouse_CD3 HEK-293 Cell Line	H_CD3(TCR V2) CHO-K1 Cell Line
H_CD3(TCR V2) HEK-293 Cell Line	
Anti-CD19×CD3 hIgG1 Antibody[PIT-565(CD58 K34A)]	Anti-CD3 epsilon hIgG1 Antibody [OKT-3 (muromonab)]
Anti-CD3 hIgG1 Antibody(13A1)	Anti-CD3 hIgG1 Antibody(CH2527)
Anti-CD3×CD20 hIgG1 Bispecific Antibody (Epcobio)	Anti-CD3×FCRL5 hIgG1 Bispecific Antibody(cevostamab)
Anti-CD3E×BCMA hIgG4 Reference Antibody (Tecbio)	Anti-CD3E×DLL3 hIgG1 Bispecific Antibody(Tarlabio)
Anti-CD3E×MUC17 hIgG1 Bispecific Antibody(Vepsitbio)	Anti-mouse CD3ε mIgG2a Antibody(145-2C11)
FGFR2	
H_FGFR2b Reporter 293 Cell Line	Cynomolgus_FGFR2b HEK-293 Cell Line

H_FGFR2b CHO-K1 Cell Line	H_FGFR2b HEK-293 Cell Line
Mouse_FGFR2b HEK-293 Cell Line	
Anti-FGFR2 hIgG1 Antibody(hFR2-14_H12-L1)	Anti-FGFR2 hIgG1 Referece Antibody (Bemabio)
Cynomolqus FGFR2(IIIb) D1-D3 Protein; His Tag	Human FGFR2(IIIb) D1-D3 Protein; hFc Tag
Human FGFR2(IIIb) D2-D3 Protein; hFc Tag	Human FGFR2(IIIb) D2-D3 Protein; His Tag
Human FGFR2(IIIc) D1-D3 Protein; His Tag	Mouse FGFR2(IIIb) D2-D3 Protein; His Tag
<b>CLDN3</b>	
H_CLDN3 HEK-293 Cell Line	
Anti-CLDN3 hIgG1 Antibody(H4G3)	
<b>CLDN4</b>	
H_CLDN4 HEK-293 Cell Line	
Anti-CLDN4 hIgG1 Antibody(4B8)	
<b>CLDN6</b>	
Cynomolqus_CLDN6 CHO-K1 Cell Line	H_CLDN6 CHO-K1 Cell Line
H_CLDN6 HEK-293 Cell Line	H_CLDN6 LLC1 Cell Line
H_CLDN6 MC38 Cell Line	Mouse_CLDN6 CHO-K1 Cell Line
Rat_CLDN6 CHO-K1 Cell Line	Rhesus_CLDN6 CHO-K1 Cell Line
Anti-Claudin6 hIgG1 Reference Antibody	Anti-CLDN6/9 hIgG1 Antibody
<b>CLDN9</b>	
H_CLDN9 CHO-K1 Cell Line	H_CLDN9-eGFP HEK-293 Cell Line
<b>CLDN1</b>	
Cynomolqus_CLDN1 CHO-K1 Cell Line	H_CLDN1 CHO-K1 Cell Line
H_CLDN1 HCT116 Cell Line	Mouse_CLDN1-GFP CHO-K1 Cell Line
Anti-CLDN1 hIgG1 Reference Antibody (Lixubio)	
<b>CD44</b>	
H_CD44s CHO-K1 Cell Line	H_CD44v6 CHO-K1 Cell Line
H_CD44v6 CHO-K1 Cell Line (Medium Expression)	H_CD44v6 HEK-293 Cell Line
Anti-CD44v6 hIgG1 Antibody(bivatuzumab)	
<b>ADC Related Product</b>	
Anti-DXD Mouse IgG1 Antibody (23E21C5)	Anti-DXD Mouse IgG1 Antibody (4A5A12)
Anti-Dxd Mouse IgG2a Antibody (17D6A4)	Anti-Eribulin Mouse IgG2a Antibody (10F8G4)
Anti-MMAE Mouse IgG1 Antibody (11C10E3)	Anti-MMAE Mouse IgG2a Antibody (17A1K11)
Anti-MMAE Mouse IgG2a Antibody (8F6A3)	Anti-SN38 Mouse IgG1 Antibody(59H11C7)
Mouse anti Human IgG1-DXD(Dar8)	Mouse anti Human IgG1-MMAE(Dar4)
Human IgG1 Isotype-DXD (Dar8)	Human IgG1 Isotype-Eribulin (Dar4)
Human IgG1 Isotype-MMAE (Dar4)	
Recombinant DT3C Protein	

## License Agreement:

**By purchasing and using this cell line product, the user voluntarily agrees to accept and abide by the following policies:**

- This cell line product is restricted to research use only and shall not be used for any commercial purposes.
- This product is strictly prohibited from being used in the diagnosis or treatment of human or animal diseases, and shall not be directly used in experiments involving humans.
- Users and their contractors engaged for their benefit may use this material and its derivatives only within the agreed research scope; modification of the material is not permitted, nor may it be distributed, sold, transferred, or otherwise provided to any other entity (including affiliates).
- If use beyond the above scope is required, prior written permission from Genomeditech (Shanghai) Co.,Ltd. must be obtained. For details, please contact Genomeditech (Shanghai) Co.,Ltd.

Genomeditech