

Product Sheet

H_GLP1R HEK-293 Cell Line

Catalog number: GM-C35007

Version 3.3.1.250806

Description	H_GLP1R HEK-293 Cell Line is a clonal stable HEK-293 cell line constitutively expressing human GLP1R.
Quantity	5E6 Cells per vial, 1 mL
Product Format	1 vial of frozen cells
Shipping	Shipped on dry ice
Storage Conditions	Liquid nitrogen immediately upon receipt
Target	Human_GLP1R
Gene ID/Uniprot ID	P43220
Host Cell	HEK-293
Recovery Medium	DMEM+10% FBS+1% P.S
Growth medium	DMEM+10% FBS+1% P.S+0.75 µg/mL Puromycin
Note	None
Freezing Medium	90% FBS+10% DMSO
Growth properties	Adherent
Growth Conditions	37°C, 5% CO ₂
Mycoplasma Testing	The cell line has been screened to confirm the absence of Mycoplasma species.
Safety considerations	Biosafety Level 2
Note	It is recommended to expand the cell culture and store a minimum of 10 vials at an early passage for potential future use.

Materials

Reagent	Manufacturer/Catalogue No.
DMEM	Gibco/C11995500BT
Fetal Bovine Serum	ExCell/FSP500
Pen/Strep	Thermo/15140-122
Puromycin	Genomeditech/ GM-040401
Anti-H_GLP1R hIgG1 Antibody(glutazumab)	Genomeditech/ GM-84914AB

Figures

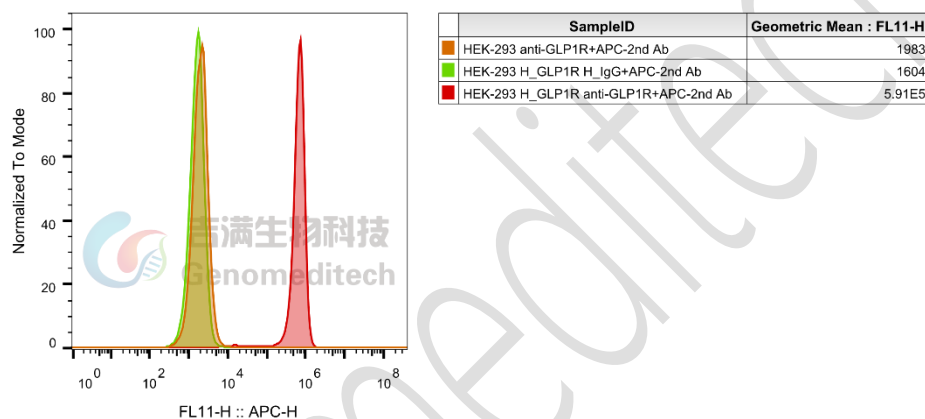


Figure 1 | H_GLP1R HEK-293 Cell Line (Cat. GM-C35007) as determined by flow cytometry using Anti-H_GLP1R hIgG1 Antibody(glutazumab) (Cat. [GM-84914AB](#)).

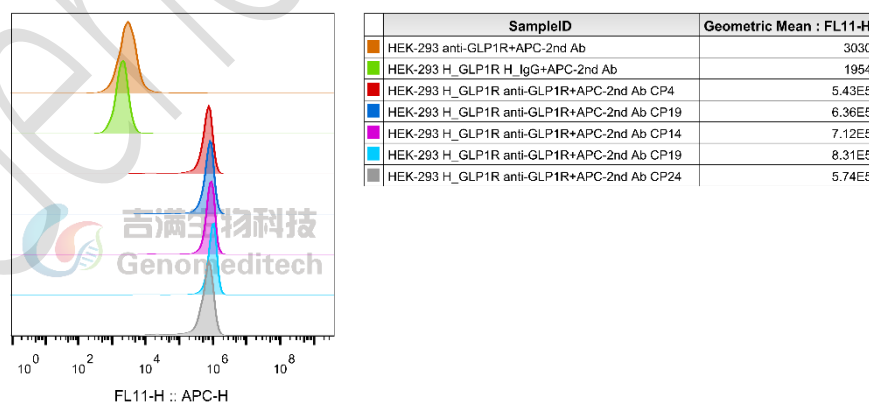


Figure 2 | The passage stability of the H_GLP1R HEK-293 Cell Line (Cat. GM-C35007) was determined by flow cytometry using Anti-H_GLP1R hIgG1 Antibody(glutazumab) (Cat. [GM-84914AB](#)).

Cell Recovery

Recovery Medium: DMEM+10% FBS+1% P.S

To insure the highest level of viability, thaw the vial and initiate the culture as soon as possible upon receipt. If upon arrival, continued storage of the frozen culture is necessary, it should be stored in liquid nitrogen vapor phase and not at -70°C. Storage at -70°C will result in loss of viability.

- Thaw the vial by gentle agitation in a 37°C water bath. To reduce the possibility of contamination, keep the O-ring and cap out of the water. Thawing should be rapid (approximately 2 - 3 minutes).
- Remove the vial from the water bath as soon as the contents are thawed, and decontaminate by dipping in or spraying with 70% ethanol. All of the operations from this point on should be carried out under strict aseptic conditions.
- Transfer the vial contents to a centrifuge tube containing 5.0 mL complete culture medium and spin at approximately 176 x g for 5 minutes. Discard supernatant.
- Resuspend cell pellet with the recommended recovery medium. And dispense into appropriate culture dishes.
- Incubate the culture at 37°C in a suitable incubator. A 5% CO₂ in air atmosphere is recommended if using the medium described on this product sheet.

Cell Freezing

Freezing Medium: 90% FBS+10% DMSO

- Centrifuge at 176 x g for 3 minutes to collect cells.
- Resuspend the cells in pre-cooled freezing medium and adjust the cell density to 5E6 cells/mL.
- Aliquot 1 mL into each vial.
- Place the vial in a controlled-rate freezing container and store at -80°C for at least 1 day, then transfer to liquid nitrogen as soon as possible.

Cell passage

Growth medium: DMEM+10% FBS+1% P.S+0.75 µg/mL Puromycin

For the first 1 to 2 passages post-resuscitation, use the recovery medium. Once the cells have stabilized, switch to a growth medium.

- Subculturing is necessary when the cell density reaches 80%. It is recommended to perform subculturing at a ratio of 1:3 to 1:4 every 2-3 days. Ensure that the density does not exceed 80%, as overcrowding can lead to reduced viability due to compression.
- Remove and discard culture medium.
- Briefly rinse the cell layer with PBS to remove all traces of serum that contains trypsin inhibitor.
- Add 1.0 mL of 0.25% (w/v) Trypsin-EDTA solution to dish and observe cells under an inverted microscope until cell layer is dispersed (usually within 30 to 60 seconds at 37°C).
- Note: To avoid clumping do not agitate the cells by hitting or shaking the flask while waiting for the cells to detach. Cells that are difficult to detach may be placed at 37°C to facilitate dispersal.
- Add 2.0 mL of growth medium to mix well and aspirate cells by gently pipetting.

- g) After centrifugation, resuspend the pellet and add appropriate aliquots of the cell suspension to new culture vessels.
- h) Incubate cultures at 37°C.

Subcultivation Ratio: A subcultivation ratio of 1:3 - 1:4 is recommended

Medium Renewal: Every 2 to 3 days

Notes

- a) Upon initial thawing, a higher number of dead cells is observed, which is a normal phenomenon. Significant improvement is seen after adaptation. Once the cells reach a stable state, the number of dead cells decreases after subculturing and the cell growth rate becomes stable.
- b) Ensure that the cell density does not exceed 80%, as overcrowding may lead to reduced viability due to compression.

Sequence

GLP1R [P43220](#)

MAGAPGLRLALLLLGMVGRAGPRPQGATVSLWETVQKWREYRRQCQRSLTEDPPPATDLFCNRTFDEYAC
 WPDGEPGSFVNVSPPWYLPWASSVPQGHVYRFCTAEGLWLQKDNSSLPWRDLSECEESKRGERSSPEEQLLF
 LYIIYTVGYALSFSALVIASAILLGFRHLHCTRNYIHLNLFASFILRALSVFIKDAALKWMYSTAAQQHQWDGL
 LSYQDSLSCRLVFLLMQYCVAANYWLLVEGVYLYTLLAFSVLSEQWIFRLYVSIGWGVPLLFVVPWGIVK
 YLYEDEGCWTRNSNMNYWLIIRLPILFAIGVNFLIFVRVICIVVSKLKANLMCKTDIKCRLAKSTLTLIPLLGTH
 EVIFAFVMDEHARGTLRFIKLFTLSFTSFQGLMVAILYCFVNNEVQLEFRKSWERWRLEHLHIQRDSSMKPL
 KCPTSSLSSGATAGSSMYTATCQASCS

Related Products

GCGR	
H_GCGR Reporter CHO-K1 Cell Line	H_GCGR Reporter HEK-293 Cell Line
H_GCGR Reporter HEK-293 DDX35TM Cell Line	Cynomolgus_GCGR HEK-293 Cell Line
H_GCGR CHO-K1 Cell Line	H_GCGR HEK-293 Cell Line
Mouse_GCGR HEK-293 Cell Line	
Anti-H_GCGR hIgG2 Antibody(volagidemab)	
GLP1R	
H_GLP1R Reporter CHO-K1 Cell Line	H_GLP1R Reporter HEK-293 Cell Line
H_GLP1R Reporter HEK-293 DDX35TM Cell Line	H_GLP1R β-Arrestin Reporter CHO-K1 Cell Line
Cynomolgus_GLP1R HEK-293 Cell Line	H_GLP1R CHO-K1 Cell Line
H_GLP1R GIPR CHO-K1 Cell Line	Mouse_GLP1R HEK-293 Cell Line
Anti-GLP1R hIgG1 Antibody(mAb-36986)	Anti-H_GLP1R hIgG1 Antibody(glutazumab)
FGF21	
H_FGF21 Reporter HEK-293 Cell Line	
Human FGF-21 Protein; His Tag	
CALCA(CGRP): CALCRL RAMP	

H_CALCRL RAMP1 Reporter HEK-293 Cell Line	H_CALCRL RAMP1 Reporter HEK-293 DDX35TM Cell Line
Cynomolgus_CALCRL RAMP1 HEK-293 Cell Line	H_CALCRL RAMP1 CHO-K1 Cell Line
H_CALCRL RAMP1 HEK-293 Cell Line	
Anti-CALCRL RAMP1 hIgG2 Antibody(Erenumab)	
GIP:GIPR	
H_GIPR Reporter CHO-K1 Cell Line	H_GIPR Reporter HEK-293 Cell Line
H_GIPR Reporter HEK-293 DDX35TM Cell Line	Cynomolgus_GIPR CHO-K1 Cell Line
Cynomolgus_GIPR HEK-293 Cell Line	H_GIPR CHO-K1 Cell Line
H_GIPR HEK-293 Cell Line	Mouse_GIPR CHO-K1 Cell Line
Mouse_GIPR HEK-293 Cell Line	
Anti-H_GIPR hIgG1 Antibody(AMG-133)	
ACVR2A: ACTRIIB: Active A	
ACVR2A KO HEK-293 Cell Line	Activin A Reporter Cell Line
BRE Reporter 293 Cell Line	H_ACVR2A Reporter Cell Line
H_ACVR2B Reporter Cell Line	ACVR2B KO HEK-293 Cell Line
H_ACVR2A HEK-293(ACVR2B KO) Cell Line	H_ACVR2B CHO-K1 Cell Line
H_ACVR2B HEK-293(ACVR2A KO) Cell Line	
Anti-ACVR2B hIgG1 Antibody(Bimagrumab)	Anti-ACVR2B hIgG1 Antibody(Fab-17G05)
Anti-ACVR2B mIgG2a Antibody(Bimagrumab)	Anti-H_ACVR2B hIgG1 Reference Antibody(Bimbio)
Biotinylated Human ACVR2A Protein; His-Avi Tag	Biotinylated Human ACVR2B Protein; His-Avi Tag
Biotinylated Mouse ACVR2A Protein; His-Avi Tag	Biotinylated Mouse ACVR2B Protein; His-Avi Tag
Human Activin A Protein; His Tag	Human Activin A Protein; His Tag (CHO)
Human Activin B Protein; His Tag	Human ACVR2A Protein; hFc Tag
Human ACVR2A Protein; hFc Tag (Sotatercept)	Human ACVR2A Protein; His Tag
Human ACVR2B Protein; hFc Tag	Human ACVR2B Protein; His Tag
Human latent GDF-8 Protein; His Tag	Mouse ACVR2A Protein; His Tag
Mouse ACVR2B Protein; His Tag	
AMY: CALCR RAMP	
H_CALCR RAMP3(AMY3) Reporter CHO-K1 Cell Line	H_CALCR Reporter CHO-K1 Cell Line

License Agreement:

By purchasing and using this cell line product, the user voluntarily agrees to accept and abide by the following policies:

- This cell line product is restricted to research use only and shall not be used for any commercial purposes.
- This product is strictly prohibited from being used in the diagnosis or treatment of human or animal diseases, and shall not be directly used in experiments involving humans.

- Users and their contractors engaged for their benefit may use this material and its derivatives only within the agreed research scope; modification of the material is not permitted, nor may it be distributed, sold, transferred, or otherwise provided to any other entity (including affiliates).
- If use beyond the above scope is required, prior written permission from Genomeditech (Shanghai) Co.,Ltd. must be obtained. For details, please contact Genomeditech (Shanghai) Co.,Ltd.

Genomeditech