

# Product Sheet

## H\_EPO Reporter 293 Cell Line

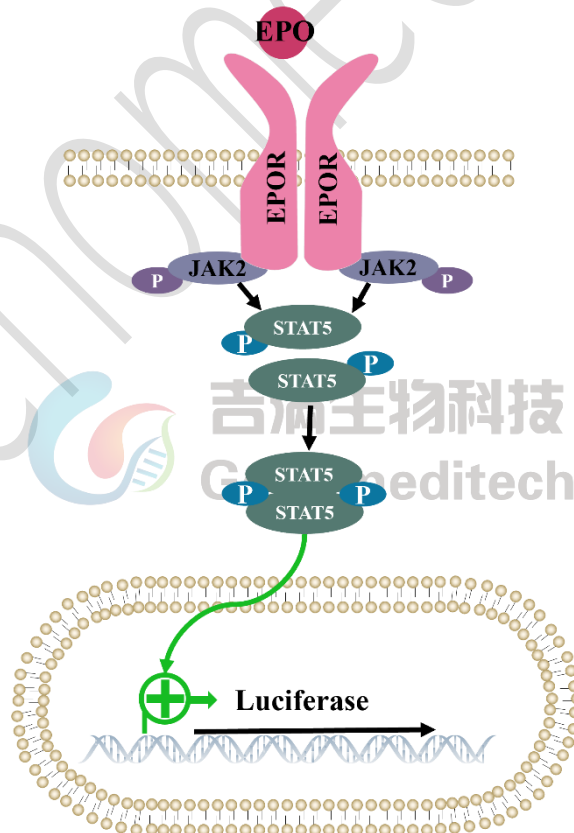
Catalog number: GM-C33026

Version 3.3.1.250507

Erythropoietin (EPO) is a glycoprotein produced by adult kidney cells and fetal liver, which binds to its receptor EPOR on erythroid precursors, activating pathways like JAK2/STAT5 to promote their survival, proliferation, and maturation into red blood cells.

Abnormal EPO/EPOR signaling can cause blood disorders like anemia or erythrocytosis and is linked to some tumors and immune diseases. Reduced signaling leads to anemia and hypoxia, while overactivation causes polycythemia and certain cancers.

H\_EPO Reporter 293 Cell Line is a clonal stable HEK-293 cell line constructed using lentiviral technology, constitutive expression of the EPOR gene, along with signal-dependent expression of a luciferase reporter gene. When the EPO protein binds to the receptor, it activates downstream signaling pathways, leading to the expression of luciferase. The luciferase activity measurement indicates the activation level of the signaling pathway and can be used to evaluate the in vitro effects of related drugs.



## Specifications

<b>Quantity</b>	5E6 Cells per vial, 1 mL
<b>Product Format</b>	1 vial of frozen cells
<b>Shipping</b>	Shipped on dry ice
<b>Storage Conditions</b>	Liquid nitrogen immediately upon receipt
<b>Recovery Medium</b>	DMEM+10% FBS+1% P.S
<b>Growth medium</b>	DMEM+10% FBS+1% P.S+4 µg/mL Blasticidin+125 µg/mL Hygromycin+0.75 µg/mL Puromycin
<b>Note</b>	None
<b>Freezing Medium</b>	90% FBS+10% DMSO
<b>Growth properties</b>	Adherent
<b>Growth Conditions</b>	37°C, 5% CO <sub>2</sub>
<b>Mycoplasma Testing</b>	The cell line has been screened to confirm the absence of Mycoplasma species.
<b>Safety considerations</b>	Biosafety Level 2
<b>Note</b>	It is recommended to expand the cell culture and store a minimum of 10 vials at an early passage for potential future use.

## Materials

Reagent	Manufacturer/Catalogue No.
DMEM	Gibco/C11995500BT
Fetal Bovine Serum	Cegrogen biotech/A0500-3010
Pen/Strep	Thermo/15140-122
Blasticidin	Genomeditech/ <a href="#">GM-040404</a>
Hygromycin	Genomeditech/ <a href="#">GM-040403</a>
Puromycin	Genomeditech/ <a href="#">GM-040401</a>
Recombinant Human EPO (C-6His)	Novoprotein/C001
Human Erythropoietin R Antibody	R&D/MAB307-SP
GMOne-Step Luciferase Reporter Gene Assay Kit	Genomeditech/ <a href="#">GM-040503</a>

## Figures

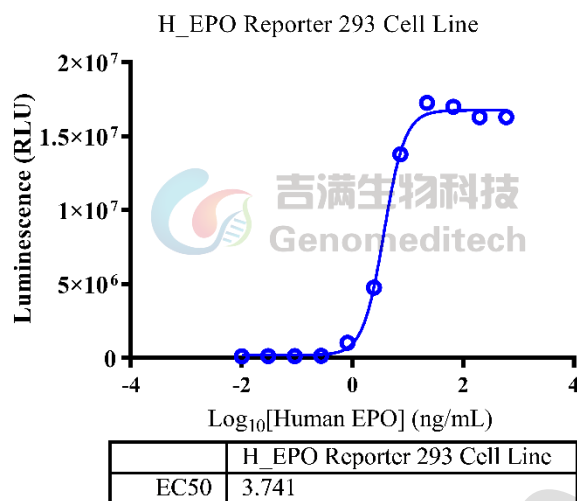


Figure 1 | Response to human EPO protein. The H\_EPO Reporter 293 Cell Line (Cat. GM-C33026) at a concentration of 1.5E4 cells/well (96-well format) was stimulated with serial dilutions of Recombinant Human EPO (C-6His) (Novoprotein/C001) in assay buffer (DMEM + 1% FBS + 1% P.S) for 6 hours. The firefly luciferase activity was measured using the GMOne-Step Luciferase Reporter Gene Assay Kit (Cat. [GM-040503](#)). The maximum induction fold was approximately [113]. Data are shown by drug mass concentration.

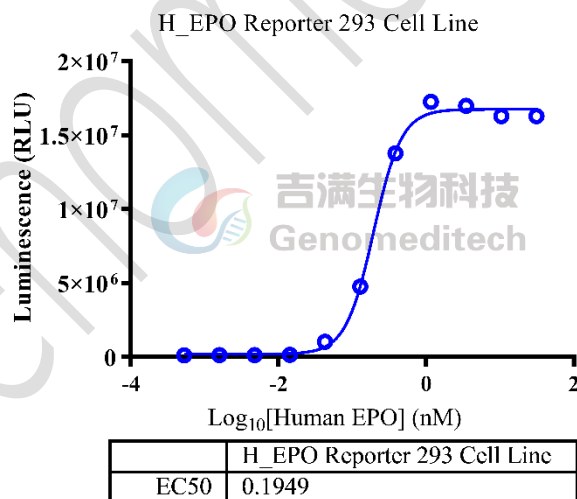


Figure 2 | Response to human EPO protein. The H\_EPO Reporter 293 Cell Line (Cat. GM-C33026) at a concentration of 1.5E4 cells/well (96-well format) was stimulated with serial dilutions of Recombinant Human EPO (C-6His) (Novoprotein/C001) in assay buffer (DMEM + 1% FBS + 1% P.S) for 6 hours. The firefly luciferase activity was measured using the GMOne-Step Luciferase Reporter Gene Assay Kit (Cat. [GM-040503](#)). The maximum induction fold was approximately [113]. Data are shown by drug molar concentration.

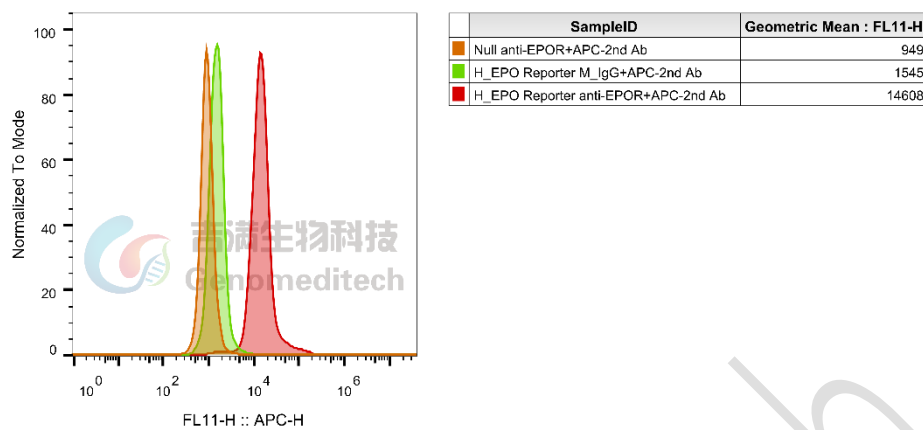


Figure 3 | H\_EPO Reporter 293 Cell Line (Cat. GM-C33026) was determined by flow cytometry using Human Erythropoietin R Antibody (R&D/MAB307-SP).

## Cell Recovery

Recovery Medium: DMEM+10% FBS+1% P.S

To insure the highest level of viability, thaw the vial and initiate the culture as soon as possible upon receipt. If upon arrival, continued storage of the frozen culture is necessary, it should be stored in liquid nitrogen vapor phase and not at -70°C. Storage at -70°C will result in loss of viability.

- Thaw the vial by gentle agitation in a 37°C water bath. To reduce the possibility of contamination, keep the O-ring and cap out of the water. Thawing should be rapid (approximately 2 - 3 minutes).
- Remove the vial from the water bath as soon as the contents are thawed, and decontaminate by dipping in or spraying with 70% ethanol. All of the operations from this point on should be carried out under strict aseptic conditions.
- Transfer the vial contents to a centrifuge tube containing 5.0 mL complete culture medium and spin at approximately 176 x g for 5 minutes. Discard supernatant.
- Resuspend cell pellet with the recommended recovery medium. And dispense into appropriate culture dishes.
- Incubate the culture at 37°C in a suitable incubator. A 5% CO<sub>2</sub> in air atmosphere is recommended if using the medium described on this product sheet.

## Cell Freezing

Freezing Medium: 90% FBS+10% DMSO

- Centrifuge at 176 x g for 3 minutes to collect cells.
- Resuspend the cells in pre-cooled freezing medium and adjust the cell density to 5E6 cells/mL.
- Aliquot 1 mL into each vial.
- Place the vial in a controlled-rate freezing container and store at -80°C for at least 1 day, then transfer to liquid nitrogen as soon as possible.

## Cell passage

Growth medium: DMEM+10% FBS+1% P.S+4  $\mu\text{g/mL}$  Blasticidin+125  $\mu\text{g/mL}$  Hygromycin+0.75  $\mu\text{g/mL}$  Puromycin

For the first 1 to 2 passages post-resuscitation, use the recovery medium. Once the cells have stabilized, switch to a growth medium.

- Subculturing is necessary when the cell density reaches 80%. It is recommended to perform subculturing at a ratio of 1:3 to 1:4 every 2-3 days. Ensure that the density does not exceed 80%, as overcrowding can lead to reduced viability due to compression.
- Remove and discard culture medium.
- Briefly rinse the cell layer with PBS to remove all traces of serum that contains trypsin inhibitor.
- Add 1.0 mL of 0.25% (w/v) Trypsin-EDTA solution to dish and observe cells under an inverted microscope until cell layer is dispersed (usually within 30 to 60 seconds at 37°C).
- Note: To avoid clumping do not agitate the cells by hitting or shaking the flask while waiting for the cells to detach. Cells that are difficult to detach may be placed at 37°C to facilitate dispersal.
- Add 2.0 mL of growth medium to mix well and aspirate cells by gently pipetting.
- After centrifugation, resuspend the pellet and add appropriate aliquots of the cell suspension to new culture vessels.
- Incubate cultures at 37°C.

**Subcultivation Ratio: A subcultivation ratio of 1:3 - 1:4 is recommended**

**Medium Renewal: Every 2 to 3 days**

## Notes

- Upon initial thawing, a higher number of dead cells is observed, which is a normal phenomenon. Significant improvement is seen after adaptation. Once the cells reach a stable state, the number of dead cells decreases after subculturing and the cell growth rate becomes stable.
- Ensure that the cell density does not exceed 80%, as overcrowding may lead to reduced viability due to compression.

## Limited Use License Agreement

Genomeditech (Shanghai) Co., Ltd grants to the Licensee all intellectual property rights, exclusive, non-transferable, and non-sublicensable rights of the Licensed Materials; Genomeditech (Shanghai) Co., Ltd will retain ownership of the Licensed Materials, cell line history packages, progeny, and the Licensed Materials including modified materials.

Between Genomeditech (Shanghai) Co., Ltd, and Licensee, Licensee is not permitted to modify cell lines in any way. The Licensee shall not share, distribute, sell, sublicense, or otherwise provide the Licensed Materials, or progenitors to third parties such as laboratories, departments, research institutions, hospitals, universities, or biotechnology companies for use other than for the purpose of outsourcing the Licensee's research.

Please refer to the Genomeditech Cell Line License Agreement for details.