

# Product Sheet

## H\_IL17A Reporter 293 Cell Line

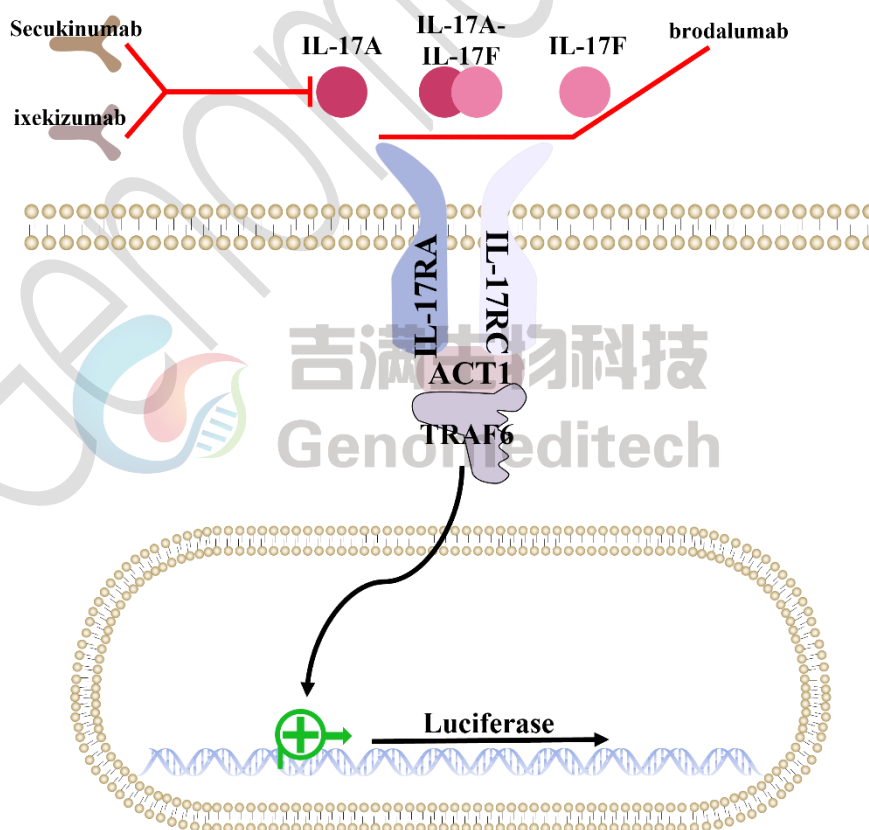
Catalog number: GM-C06721

Version 3.3.1.250914

IL-17 is a pro-inflammatory cytokine mainly produced by Th17 cells. It is crucial for immune defense against bacterial and fungal infections and is linked to autoimmune diseases like rheumatoid arthritis, psoriasis, and multiple sclerosis. The IL-17 family includes several members, with IL-17A and IL-17F being the most studied.

The IL-17 signaling pathway starts when IL-17 binds to its receptor, IL-17R, composed of IL-17RA and IL-17RC subunits. This binding activates downstream molecules like ACT1, which then activate the NF- $\kappa$ B and MAPK pathways. These pathways increase the expression of pro-inflammatory cytokines and chemokines, enhancing inflammatory responses. The pathway also influences immune responses by affecting cell survival, proliferation, and differentiation.

H\_IL17A Reporter 293 Cell Line is a clonal stable cell line constructed using lentiviral technology, constitutive expression of the IL-17RA, IL-17RC and some adapter membrane molecules, along with signal-dependent expression of a luciferase reporter gene. When IL-17A/F binds to IL-17R, it activates downstream signaling pathways, leading to the expression of luciferase. Blockade antibodies can inhibit this signal transmission. The luciferase activity measurement indicates the activation level of the signaling pathway and can thus be used to evaluate the in vitro effects of drugs related to IL-17.



## Specifications

<b>Quantity</b>	5E6 Cells per vial, 1 mL
<b>Product Format</b>	1 vial of frozen cells
<b>Shipping</b>	Shipped on dry ice
<b>Storage Conditions</b>	Liquid nitrogen immediately upon receipt
<b>Recovery Medium</b>	EMEM+10% FBS+1% P.S
<b>Growth medium</b>	EMEM+10% FBS+1% P.S+3 µg/mL Blasticidin+100 µg/mL Bleomycin+100 µg/mL Hygromycin+1.5 µg/mL Puromycin
<b>Note</b>	/
<b>Freezing Medium</b>	90% FBS+10% DMSO
<b>Growth properties</b>	Adherent
<b>Growth Conditions</b>	37°C, 5% CO <sub>2</sub>
<b>Mycoplasma Testing</b>	The cell line has been screened to confirm the absence of Mycoplasma species.
<b>Safety considerations</b>	Biosafety Level 2
<b>Note</b>	It is recommended to expand the cell culture and store a minimum of 10 vials at an early passage for potential future use.

## Materials

<b>Reagent</b>	<b>Manufacturer/Catalogue No.</b>
EMEM	ATCC/30-2003
Fetal Bovine Serum	ExCell/FSP500
Pen/Strep	Thermo/15140-122
Blasticidin	Genomeditech/ <a href="#">GM-040404</a>
Bleomycin	Genomeditech/ <a href="#">GM-040407</a>
Hygromycin	Genomeditech/ <a href="#">GM-040403</a>
Puromycin	Genomeditech/ <a href="#">GM-040401</a>
Recombinant Human IL-17A (C-6His)	Novoprotein/C774
Recombinant Human IL-17F (C-6His)	Novoprotein/CA22
Recombinant Human IL-25 (C-6His)	Novoprotein/C792
Anti-IL-17A hIgG1 Antibody(Secukinumab)	Genomeditech/ <a href="#">GM-27267AB</a>
Anti-IL17RA hIgG2 Antibody(brodalumab)	Genomeditech/GM-47619AB
GMOne-Step 2.0 Luciferase Reporter Gene Assay Kit	Genomeditech/ <a href="#">GM-040513</a>

## Figures

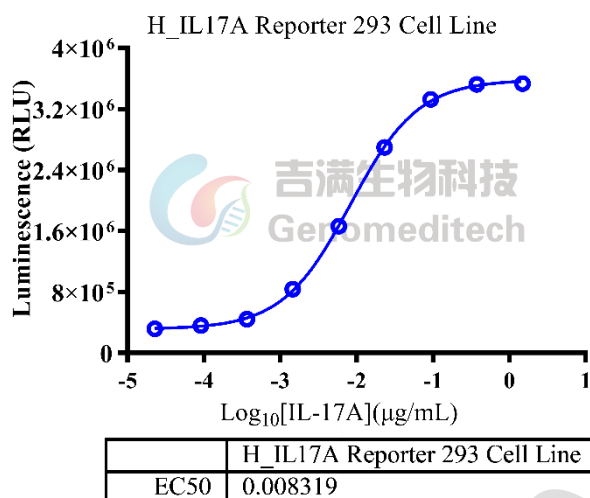


Figure 1 | Response to Recombinant Human IL-17A (C-6His). The H\_IL17A Reporter 293 Cell Line (Cat. GM-C06721) at a concentration of 1.5E4 cells/well (96-well format) was stimulated with serial dilutions of Recombinant Human IL-17A (C-6His) (Novoprotein/C774) in assay buffer (EMEM + 1% FBS + 1% P.S) for 7 hours. The firefly luciferase activity was measured using the Luciferase Reporter Assay Kit (Genomeditech). The maximum induction fold was approximately [11.2]. Data are shown by drug mass concentration.

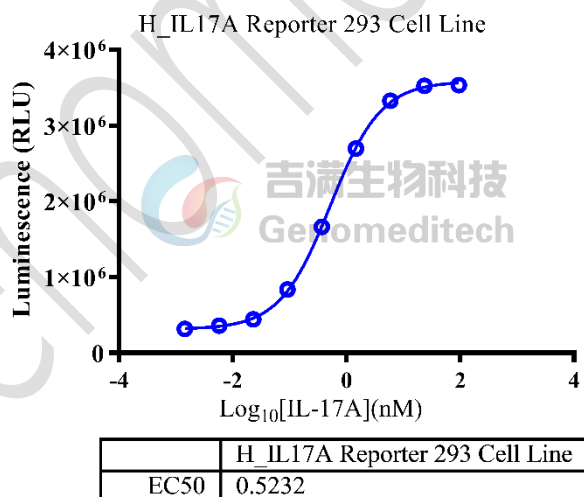


Figure 2 | Response to Recombinant Human IL-17A (C-6His). The H\_IL17A Reporter 293 Cell Line (Cat. GM-C06721) at a concentration of 1.5E4 cells/well (96-well format) was stimulated with serial dilutions of Recombinant Human IL-17A (C-6His) (Novoprotein/C774) in assay buffer (EMEM + 1% FBS + 1% P.S) for 7 hours. The firefly luciferase activity was measured using the Luciferase Reporter Assay Kit (Genomeditech). The maximum induction fold was approximately [11.2]. Data are shown by drug molar concentration.

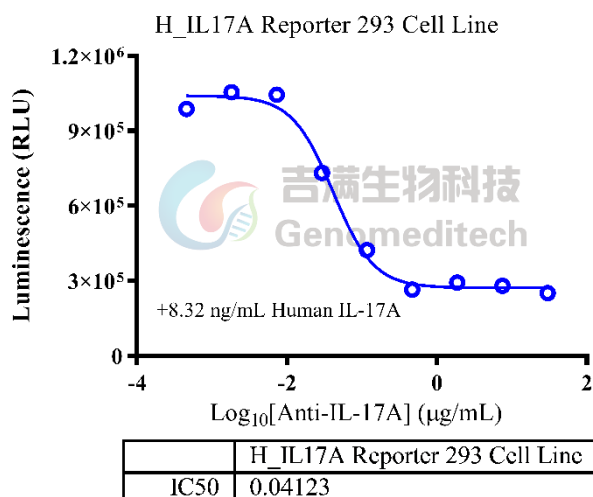


Figure 3 | Response to Anti-IL-17A hIgG1 Antibody(Secukinumab). Serial dilutions of Anti-IL-17A hIgG1 Antibody(Secukinumab) (Cat. [GM-27267AB](#)) was incubated with 0.832 ng/well of Recombinant Human IL-17A (C-6His) (Novoprotein/C774) for 1 hour in assay buffer (EMEM + 1% FBS + 1% P.S). After pre-incubation, add the mixture to the H\_IL17A Reporter 293 Cell Line (Cat. GM-C06721) at a density of 1.5E4 cells/well in a 96-well format, and incubate for 6 hours. Firefly luciferase activity is then measured using the Luciferase Reporter Assay Kit (Genomeditech). The results indicated maximum blocking folds of approximately [4.0]. Data are shown by drug mass concentration.

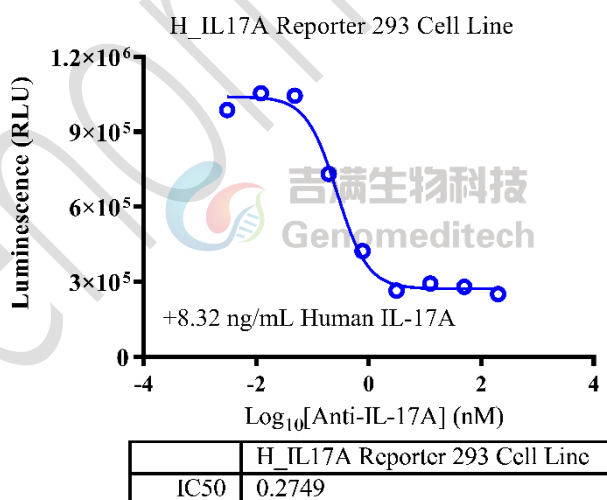


Figure 4 | Response to Anti-IL-17A hIgG1 Antibody(Secukinumab). Serial dilutions of Anti-IL-17A hIgG1 Antibody(Secukinumab) (Cat. [GM-27267AB](#)) was incubated with 0.832 ng/well of Recombinant Human IL-17A (C-6His) (Novoprotein/C774) for 1 hour in assay buffer (EMEM + 1% FBS + 1% P.S). After pre-incubation, add the mixture to the H\_IL17A Reporter 293 Cell Line (Cat. GM-C06721) at a density of 1.5E4 cells/well in a 96-well format, and incubate for 6 hours. Firefly luciferase activity is then measured using the Luciferase Reporter Assay Kit

(Genomeditech). The results indicated maximum blocking folds of approximately [4.0]. Data are shown by drug molar concentration.

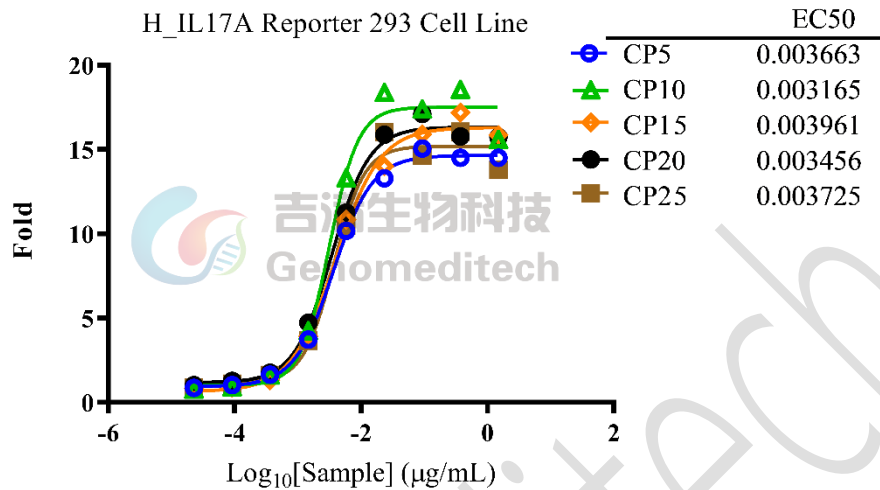


Figure 5 | The passage stability of response to Recombinant Human IL-17A (C-6His). The passage 5, 10, 15, 20 and 25 of H\_IL17A Reporter 293 Cell Line (Cat. GM-C06721) at a concentration of 1.5E4 cells/well (96-well format) were stimulated with serial dilutions of Recombinant Human IL-17A (C-6His) (Novoprotein/C774) in assay buffer (EMEM + 1% FBS + 1% P.S) for 6 hours. The firefly luciferase activity was measured using the Luciferase Reporter Assay Kit (Genomeditech). Data are shown by drug mass concentration.

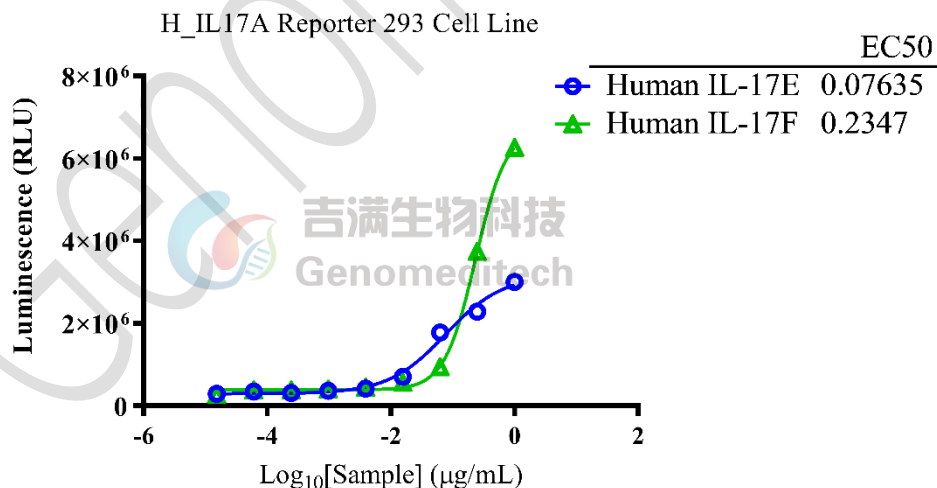


Figure 6 | Response to human IL-17F protein and human IL-17E protein. The H\_IL17A Reporter 293 Cell Line (Cat. GM-C06721) at a concentration of 1.5E4 cells/well (96-well format) was separately stimulated with serial dilutions of Recombinant Human IL-17F (C-6His) (Novoprotein/CA22) and Recombinant Human IL-25(IL-17E) (C-6His) (Novoprotein/C792) in assay buffer (EMEM(ATCC) + 1% FBS + 1% P.S) for 16 hours. The firefly luciferase activity

was measured using the Luciferase Reporter Assay Kit (Genomeditech). The maximum induction fold was approximately [22.1] and [12.9], respectively. Data are shown by drug mass concentration.

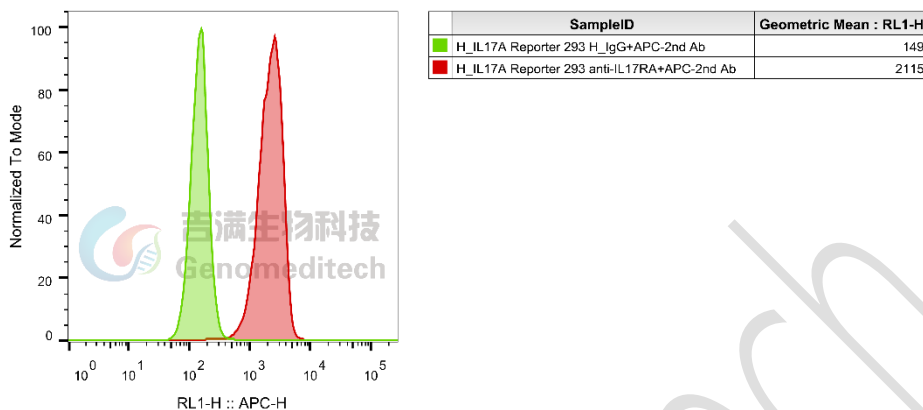


Figure 7 | H\_IL17A Reporter 293 Cell Line (Cat. GM-C06721) was determined by flow cytometry using Anti-IL17RA hIgG2 Antibody(brodalumab) (Cat. GM-47619AB).

## Cell Recovery

Recovery Medium: EMEM+10% FBS+1% P.S

To insure the highest level of viability, thaw the vial and initiate the culture as soon as possible upon receipt. If upon arrival, continued storage of the frozen culture is necessary, it should be stored in liquid nitrogen vapor phase and not at -70°C. Storage at -70°C will result in loss of viability.

- Thaw the vial by gentle agitation in a 37°C water bath. To reduce the possibility of contamination, keep the O-ring and cap out of the water. Thawing should be rapid (approximately 2 - 3 minutes).
- Remove the vial from the water bath as soon as the contents are thawed, and decontaminate by dipping in or spraying with 70% ethanol. All of the operations from this point on should be carried out under strict aseptic conditions.
- Transfer the vial contents to a centrifuge tube containing 5.0 mL complete culture medium and spin at approximately 176 x g for 5 minutes. Discard supernatant.
- Resuspend cell pellet with the recommended recovery medium. And dispense into appropriate culture dishes.
- Incubate the culture at 37°C in a suitable incubator. A 5% CO<sub>2</sub> in air atmosphere is recommended if using the medium described on this product sheet.

## Cell Freezing

Freezing Medium: 90% FBS+10% DMSO

- Centrifuge at 176 x g for 3 minutes to collect cells.
- Resuspend the cells in pre-cooled freezing medium and adjust the cell density to 5E6 cells/mL.
- Aliquot 1 mL into each vial.

- d) Place the vial in a controlled-rate freezing container and store at  $-80^{\circ}\text{C}$  for at least 1 day, then transfer to liquid nitrogen as soon as possible.

## Cell passage

Growth medium: EMEM+10% FBS+1% P.S+3  $\mu\text{g}/\text{mL}$  Blasticidin+100  $\mu\text{g}/\text{mL}$  Bleomycin+100  $\mu\text{g}/\text{mL}$  Hygromycin+1.5  $\mu\text{g}/\text{mL}$  Puromycin

For the first 1 to 2 passages post-resuscitation, use the recovery medium. Once the cells have stabilized, switch to a growth medium.

- Remove and discard culture medium.
- Briefly rinse the cell layer with PBS to remove all traces of serum that contains trypsin inhibitor.
- Add 1.0 mL of 0.25% (w/v) Trypsin-EDTA solution to dish and observe cells under an inverted microscope until cell layer is dispersed (usually within 30 to 60 seconds at  $37^{\circ}\text{C}$ ).
- Note: To avoid clumping do not agitate the cells by hitting or shaking the flask while waiting for the cells to detach. Cells that are difficult to detach may be placed at  $37^{\circ}\text{C}$  to facilitate dispersal.
- Add 2.0 mL of growth medium to mix well and aspirate cells by gently pipetting.
- After centrifugation, resuspend the pellet and add appropriate aliquots of the cell suspension to new culture vessels.
- Incubate cultures at  $37^{\circ}\text{C}$ .

**Subcultivation Ratio: A subcultivation ratio of 1:3 - 1:4 is recommended**

**Medium Renewal: Every 2 to 3 days**

## Notes

- Upon initial revival, a higher number of dead cells and poor adherence are observed, which is normal. Adherence typically recovers within 2 - 3 days. After 2 - 3 passages, the proportion of adherent cells increases, and the cells begin to spread normally.
- After each passage, there may be 5 - 10% dead cells; however, as the number of passages increases, the recovery rate accelerates, the proportion of dead cells decreases, and the cell growth rate stabilizes.
- It is recommended to retain cell images after revival and during each observation to assist in assessing cell status. In case of abnormalities, promptly communicate with Genomeditech sales.

## Related Products

IL-17	
<a href="#">H_IL17A Reporter 293 DDX35TM Cell Line</a>	<a href="#">Membrane Bound H_IL17A CHO-K1 Cell Line</a>
<a href="#">Anti-IL-17A hIgG1 Antibody(Secukinumab)</a>	<a href="#">Anti-IL17A hIgG1 Reference Antibody (Secubio)</a>
<a href="#">Biotinylated Human IL-17A Protein; His-Avi Tag</a>	<a href="#">Biotinylated Human IL-17RA Protein; His-Avi Tag</a>
<a href="#">Cynomolgus IL-17A Protein; His Tag</a>	<a href="#">Cynomolgus IL-17F Protein; His Tag</a>
<a href="#">Human IL-17A Protein; hFc Tag</a>	<a href="#">Human IL-17A Protein; His Tag</a>
<a href="#">Human IL-17E Protein; His Tag</a>	<a href="#">Human IL-17F Protein; His Tag</a>

IL-23	
H_IL-23 Reporter 293 Cell Line	H_IL-23 Reporter 293 DDX35TM Cell Line
Cynomolgus_IL-23R HEK-293 Cell Line	H_IL-23R HEK-293 Cell Line
Membrane bound H_IL-23 CHO-K1 Cell Line	
Anti-IL-23R hIgG1 Antibody(5D4)	
Biotinylated Human IL-23A&IL-12B Heterodimer Protein; His-Avi Tag	Cynomolgus IL-23A & Human IL-12B Heterodimer Protein; His Tag
Cynomolgus IL-23A & Mouse IL-12B Heterodimer Protein; His Tag	Cynomolgus IL-23R Protein; hFc Tag
Human IL-23A & Mouse IL-12B Heterodimer Protein; His Tag	Human IL-23A&IL-12B Heterodimer Protein; His Tag
Human IL-23R Protein; hFc Tag	Human IL-23R Protein; His Tag
Mouse IL-23A&IL-12B Heterodimer Protein; His Tag	
TNF:TNFR2:TNFR1	
H_TNFR2 Null Reporter Cell Line	H_TNFR2 Reporter Jurkat Cell Line
H_TNFR2 Reporter V2 Cell Line	Cynomolgus_TNFRSF1B(TNFR2) CHO-K1 Cell Line
H_TNFRSF1B(TNFR2) CHO-K1 Cell Line	H_TNFRSF1B(TNFR2) HEK-293 Cell Line
Membrane Bound H_TNF $\alpha$ CHO-K1 Cell Line	Membrane Bound H_TNF $\alpha$ (cleavage-resistant) CHO-K1 Cell Line
Anti-H_TNFRSF1B(TNFR2) hIgG1 Antibody(UC2.3.8)	Anti-TNFR1 hIgG1 Antibody(Atrosab)

## License Agreement:

**By purchasing and using this cell line product, the user voluntarily agrees to accept and abide by the following policies:**

- This cell line product is restricted to research use only and shall not be used for any commercial purposes.
- This product is strictly prohibited from being used in the diagnosis or treatment of human or animal diseases, and shall not be directly used in experiments involving humans.
- Users and their contractors engaged for their benefit may use this material and its derivatives only within the agreed research scope; modification of the material is not permitted, nor may it be distributed, sold, transferred, or otherwise provided to any other entity (including affiliates).
- If use beyond the above scope is required, prior written permission from Genomeditech (Shanghai) Co.,Ltd. must be obtained. For details, please contact Genomeditech (Shanghai) Co.,Ltd.