

Product Sheet

H_KITLG(SCF248) CHO-K1 Cell Line

Catalog number: GM-C44185

Version 3.3.1.260407

Description	H_KITLG(SCF248) CHO-K1 Cell Line is a clonal stable CHO-K1 cell line that constitutively expresses the human KITLG(SCF248) gene, constructed using lentiviral technology.
Quantity	5E6 Cells per vial, 1 mL
Product Format	1 vial of frozen cells
Shipping	Shipped on dry ice
Storage Conditions	Liquid nitrogen immediately upon receipt
<hr/>	
Target	Human KITLG(SCF248)
Gene ID/Uniprot ID	P21583-1
Host Cell	CHO-K1
<hr/>	
Recovery Medium	F12K+10% FBS+1% P.S
Growth medium	F12K+10% FBS+1% P.S+4 µg/mL Puromycin
Note	None
Freezing Medium	90% FBS+10% DMSO
Growth properties	Adherent
Growth Conditions	37°C, 5% CO ₂
<hr/>	
Mycoplasma Testing	The cell line has been screened to confirm the absence of Mycoplasma species.
Safety considerations	Biosafety Level 2
Note	It is recommended to expand the cell culture and store a minimum of 10 vials at an early passage for potential future use.

Materials

Reagent	Manufacturer/Catalogue No.
F12K	BOSTER/PYG0036
Fetal Bovine Serum	ExCell/FSP500
Pen/Strep	Thermo/15140-122
Puromycin	Genomeditech/GM-040401
Anti-SCF248 hIgG4 Antibody(5H10)	Genomeditech/GM-88456AB

Figures

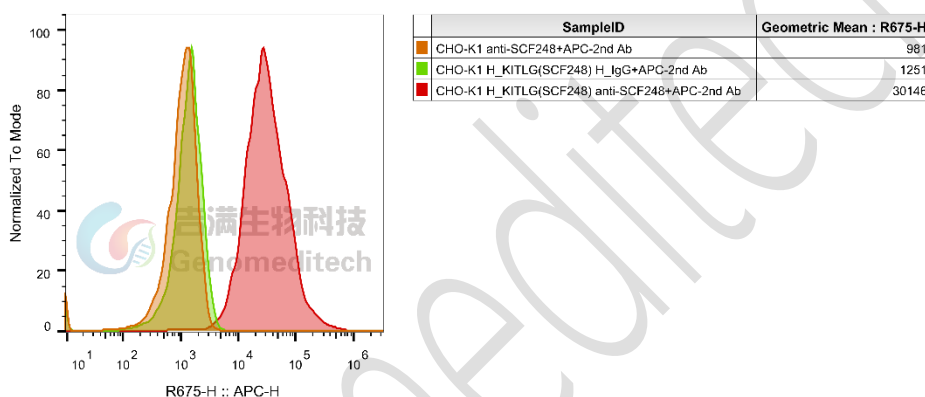


Figure 1 | H_KITLG(SCF248) CHO-K1 Cell Line (Cat. GM-C44185) was determined by flow cytometry using Anti-SCF248 hIgG4 Antibody(5H10) (Cat. GM-88456AB).

Cell Recovery

Recovery Medium: F12K+10% FBS+1% P.S

To insure the highest level of viability, thaw the vial and initiate the culture as soon as possible upon receipt. If upon arrival, continued storage of the frozen culture is necessary, it should be stored in liquid nitrogen vapor phase and not at -70°C . Storage at -70°C will result in loss of viability.

- Thaw the vial by gentle agitation in a 37°C water bath. To reduce the possibility of contamination, keep the O-ring and cap out of the water. Thawing should be rapid (approximately 2 - 3 minutes).
- Remove the vial from the water bath as soon as the contents are thawed, and decontaminate by dipping in or spraying with 70% ethanol. All of the operations from this point on should be carried out under strict aseptic conditions.
- Transfer the vial contents to a centrifuge tube containing 5.0 mL complete culture medium and spin at approximately $176 \times g$ for 5 minutes. Discard supernatant.
- Resuspend cell pellet with the recommended recovery medium. And dispense into appropriate culture dishes.

- e) Incubate the culture at 37°C in a suitable incubator. A 5% CO₂ in air atmosphere is recommended if using the medium described on this product sheet.

Cell Freezing

Freezing Medium: 90% FBS+10% DMSO

- Centrifuge at 176 x g for 3 minutes to collect cells.
- Resuspend the cells in pre-cooled freezing medium and adjust the cell density to 5E6 cells/mL.
- Aliquot 1 mL into each vial.
- Place the vial in a controlled-rate freezing container and store at -80°C for at least 1 day, then transfer to liquid nitrogen as soon as possible.

Cell passage

Growth medium: F12K+10% FBS+1% P.S+4 µg/mL Puromycin

For the first 1 to 2 passages post-resuscitation, use the recovery medium. Once the cells have stabilized, switch to a growth medium.

- Remove and discard culture medium.
- Briefly rinse the cell layer with PBS to remove all traces of serum that contains trypsin inhibitor.
- Add 1.0 mL of 0.25% (w/v) Trypsin-EDTA solution to dish and observe cells under an inverted microscope until cell layer is dispersed (usually within 2 to 3 minutes at 37°C).
- Note: To avoid clumping do not agitate the cells by hitting or shaking the flask while waiting for the cells to detach. Cells that are difficult to detach may be placed at 37°C to facilitate dispersal.
- Add 2.0 mL of growth medium to mix well and aspirate cells by gently pipetting.
- After centrifugation, resuspend the pellet and add appropriate aliquots of the cell suspension to new culture vessels.
- Incubate cultures at 37°C.

Subcultivation Ratio: A subcultivation ratio of 1:4 - 1:5 is recommended

Medium Renewal: Every 2 to 3 days

Notes

- After the stabilization of the cell condition, there will be fewer dead cells post-passage, the cell growth rate will tend to stabilize, cell morphology will become uniform, and the cells will appear robust.

Sequence

KITLG(SCF248) [P21583-1](#)

MKKTQTWILTCIYLQLLFNPLVKTEGICRNRVTNNVKDVTKLVANLPKDYMITLKYVPGMDVLPSCWISE
MVVQLSDSLTDLLDKFSNISEGLSNYSIIDKLVNIVDDLVECVKENS SKDLKKSFKSPEPRLFTPEEFFRIFNRSI
DAFKDFVVASETSDCVVSSTLSPEKDSRVSVTKPFMLPPVAASSLRNDSSSSNRKAKNPPGDSSLHWAAMAL
PALFSLIIGFAFGALYWKKRQPSLTRAVENIQINEEDNEISMLQEKEREFQEV

Related Products

c-Kit:SCF	
H_c-Kit(CD117) GNNK(-) 293 Blockade Reporter Cell Line	Cynomolgus_c-Kit(CD117) GNNK(-) CHO-K1 Cell Line
H_c-Kit(CD117) GNNK(-) CHO-K1 Cell Line	H_c-Kit(CD117) GNNK(-) HEK-293 Cell Line
H_c-Kit(CD117) GNNK(+) CHO-K1 Cell Line	H_KITLG(SCF220) CHO-K1 Cell Line
Anti-c-Kit(CD117) hIgG1 Antibody(barzolvolimab)	Anti-c-Kit(CD117) hIgG1 Antibody(briquilimab)
Anti-c-Kit(CD117) hIgG1 Reference Antibody(barbio)	
Biotinylated Human c-Kit(CD117) Protein; His-Avi Tag	Biotinylated Human SCF Protein; His-Avi Tag
Cynomolgus c-Kit(CD117) Protein; His Tag	Human c-Kit(CD117) D4-D5 Protein; His Tag
Human c-Kit(CD117) Protein; hFc Tag	Human c-Kit(CD117) Protein; His Tag
Human SCF Protein; His Tag	Human SCF Protein; mFc Tag
MRGPRX2	
H_MRGPRX2 Gq Reporter CHO-K1 Cell Line	H_MRGPRX2 Gqi5 Reporter CHO-K1 Cell Line
Tango-H_MRGPRX2 CHO-K1 Cell Line	Cynomolgus_MRGPRX2 CHO-K1 Cell Line
Cynomolgus_MRGPRX2 HEK-293 Cell Line	Flag-Mouse_Mrgprb2 CHO-K1 Cell Line
Flag-Rat_Mrgprb3 HEK-293 Cell Line	H_MRGPRX2 CHO-K1 Cell Line
H_MRGPRX2 HEK-293 Cell Line	H_MRGPRX2 HMC-1 Cell Line
H_MRGPRX2 RBL-2H3 Cell Line	
IGHE(FcεRIα)	
Membrane IgE(mIgE) HEK-293 Cell Line	
Anti-FcεRI hIgG1 Antibody (1E7)	Anti-IGHE hIgG1 Reference Antibody(Omalbio)
Biotinylated Human IgE D2-D4 Protein; His-Avi Tag	Cynomolgus IgE D2-D4 Protein; His Tag
Human FCER1A Protein; His Tag	Human FCER2(CD23) Protein; His Tag
Human IgE D2-D4 Protein; His Tag	

License Agreement:

By purchasing and using this cell line product, the user voluntarily agrees to accept and abide by the following policies:

- This cell line product is restricted to research use only and shall not be used for any commercial purposes.
- This product is strictly prohibited from being used in the diagnosis or treatment of human or animal diseases, and shall not be directly used in experiments involving humans.
- Users and their contractors engaged for their benefit may use this material and its derivatives only within the agreed research scope; modification of the material is not permitted, nor may it be distributed, sold, transferred, or otherwise provided to any other entity (including affiliates).
- If use beyond the above scope is required, prior written permission from Genomeditech (Shanghai) Co.,Ltd. must be obtained. For details, please contact Genomeditech (Shanghai) Co.,Ltd.