

Cynomolgus IL-1 alpha Protein; His Tag

Product Information

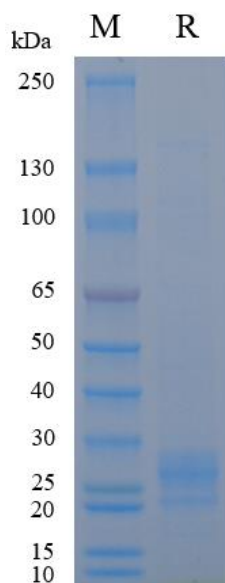
Product Name	Cynomolgus IL-1 alpha Protein; His Tag
Storage temp	Store at $\leq -70^{\circ}\text{C}$, stable for 6 months after receipt. Recommend to aliquot the protein into smaller quantities for optimal storage. Please minimize freeze-thaw cycles.
Catalog# / Size	GM-88338RP-100 / 100 μg GM-88338RP-1000 / 1 mg

Protein Information

Alternative Names	IL1A, IL-1 ALPHA, IL1F1, IL1 α
Source	Cynomolgus IL-1 alpha Protein; His Tag (GM-88338RP) is expressed from human 293 cells (HEK-293). It contains AA Ser 113 - Ala 271 (Accession # P79340). This protein carries a His tag at the C-terminus.
Purity	> 90% as determined by SDS-PAGE
Endotoxin	< 1 EU/ μg , determined by LAL gel clotting assay
Predicted Mol Mass	20.0 KDa
Formulation	Supplied as a 0.2 μm filtered solution of PBS, pH7.2-7.4.
Description	<p>The IL-1 family includes IL-1α (IL1A) and IL-1β (IL1B), both of which are important pro-inflammatory cytokines. IL-1α is typically matured intracellularly and can exist in membrane-bound or cytosolic forms; upon damage or stress, it is released and initiates inflammatory signaling via the IL-1R1/IL-1RAcP complex. IL-1β is secreted after processing by inflammasomes (e.g., NLRP3) that cleave the precursor, forming a classic paracrine signal. Both activate downstream pathways through the IL-1R1/IL-1RAcP axis, promoting the expression of pro-inflammatory genes such as IL-6, IL-8, and TNF-α, participating in inflammation, immune cell recruitment, and tissue repair; however, their sources, processing, and release mechanisms differ significantly.</p> <p>The amplification of IL-1 signaling mainly occurs through a MyD88-dependent cascade, activating the IKK/NF-κB and MAPK pathways (including p38, ERK, and JNK), rapidly promoting transcription and post-transcriptional regulation. In addition to paracrine spread, IL-1α/β can also be released into the cytosol under stress and directly interact with receptors on neighboring cells, shaping a localized inflammatory microenvironment.</p>

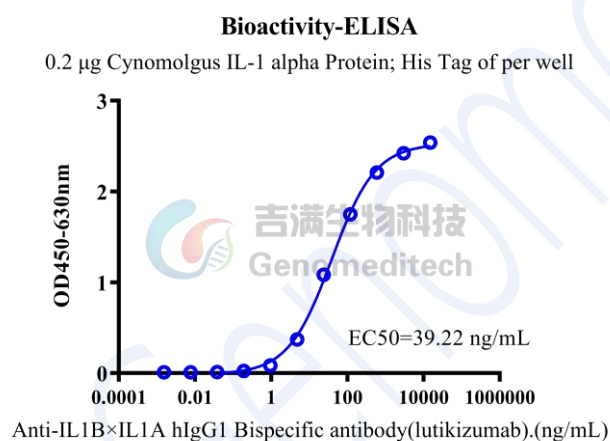
Version:4.0

SDS-PAGE

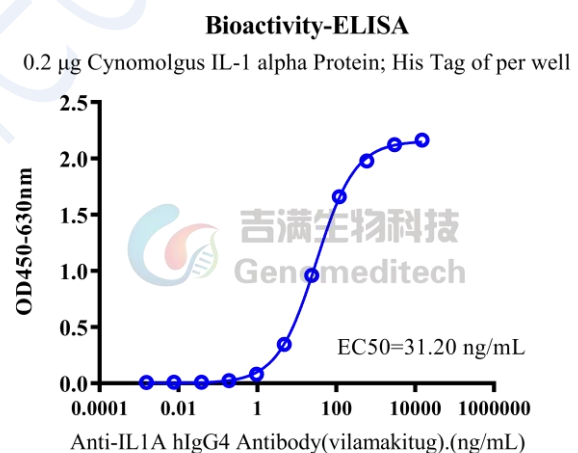


On SDS-PAGE under reducing (R) condition. The gel was stained overnight with Coomassie Blue. The purity of the protein is greater than 90%.

Bioactivity-ELISA



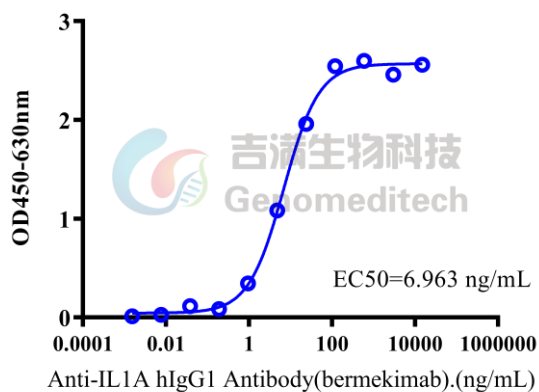
Cynomolgus IL-1 alpha Protein; His Tag (Catalog # GM-88338RP) was immobilized at 2 µg/ml (100 µL/well). Increasing concentrations of Anti-IL1BxIL1A hIgG1 Bispecific antibody (lutikizumab) (Catalog # GM-88265AB) were added.



Cynomolgus IL-1 alpha Protein; His Tag (Catalog # GM-88338RP) was immobilized at 2 µg/ml (100 µL/well). Increasing concentrations of Anti-IL1A hIgG4 Antibody (vilamakitug) (Catalog # GM-88364AB) were added.

Bioactivity-ELISA

0.2 μ g Cynomolgus IL-1 alpha Protein; His Tag of per well



Cynomolgus IL-1 alpha Protein; His Tag (Catalog # GM-88338RP) was immobilized at 2 μ g/ml (100 μ L/well).

Increasing concentrations of Anti-IL1A hIgG1 Antibody (bermekimab) (Catalog # GM-88365AB) were added.