

Anti-ASGR1 hIgG1 Antibody(4A2.001)

Product information

GM-88205AB-10	10 µg
GM-88205AB-100	100 µg
GM-88205AB-1000	1 mg

Antibody Information

Species Reactivity	Human; Cynomolgus
Clone	4A2.001
Source/Isotype	Human IgG1(SEFL2), kappa
Application	Flow Cytometry; Bioactivity-ELISA
Target	Detects ASGR1
Gene	ASGR1
Other Names	ASGPR, ASGPR1, CLEC4H1, HL-1
Gene ID	432 (Human); 102139430 (Cynomolgus)
Background	ASGR1 (Asialoglycoprotein Receptor 1) is a scavenger receptor expressed on the surface of hepatic sinusoidal endothelial cells, forming a trimeric receptor complex with ASGR2, and primarily clears desialylated glycoproteins while modulating the half-life of plasma glycoproteins to participate in metabolism and immune homeostasis. Its potential applications in antibody research include targeting ASGR1 to achieve liver-specific drug delivery and glycoengineering optimization of antibody–drug conjugates (ADCs) to enhance hepatic uptake, reduce non-hepatic distribution, and potentially modulate circulating half-life. Additionally, probes and imaging agents based on ASGR1 glycan selectivity hold promise for liver diagnostics, with in vivo and in vitro models used to assess how different glycan modifications influence binding affinity, pharmacokinetics, and safety profiles.
Storage	Store at 2-8°C short term (1-2 weeks).Store at ≤ -20°C long term. Avoid repeated freeze-thaw.
Formulation	Phosphate-buffered solution, pH 7.2-7.4.
Endotoxin	< 1 EU/mg, determined by LAL gel clotting assay

Data Examples

Flow cytometry

H_ASGR1 HEK-293 Cell Line (Catalog # GM-C41613) was stained with Anti-ASGR1 hlgG1 Antibody(4A2.001) (Catalog # GM-88205AB) or isotype control antibody, followed by anti-Human IgG APC-conjugated Secondary Antibody.

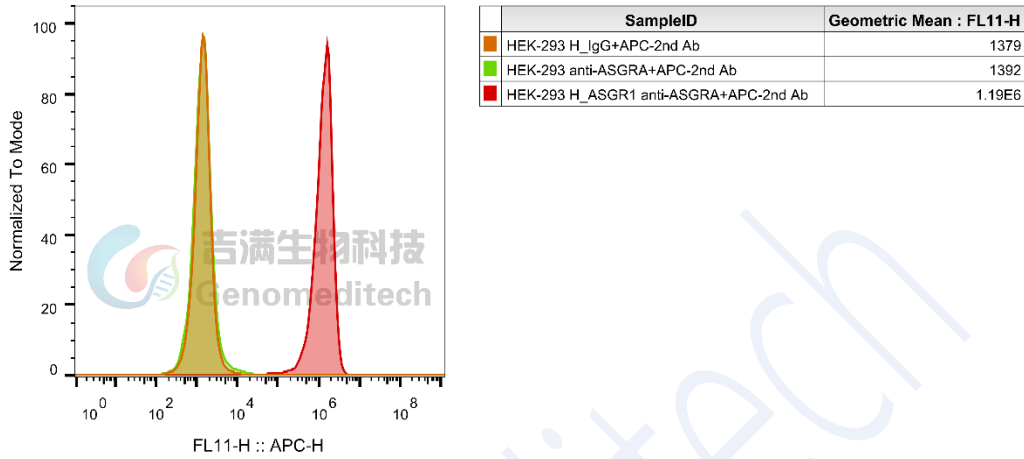


Fig. FACS

Bioactivity-ELISA

Human ASGR1 Protein; His Tag (Catalog # GM-88294RP) was immobilized at 2 µg/ml (100 µL/well). Increasing concentrations of Anti-ASGR1 hlgG1 Antibody(4A2.001) (Catalog # GM-88205AB) were added.

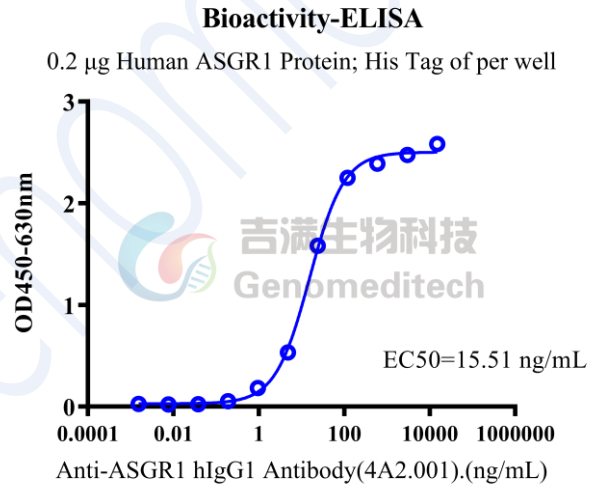


Fig. ELISA

Bioactivity-ELISA

Cynomolgus ASGR1 Protein; His Tag (Catalog # GM-88296RP) was immobilized at 2 µg/ml (100 µL/well). Increasing concentrations of Anti-ASGR1 hlgG1 Antibody(4A2.001) (Catalog # GM-88205AB) were added.

Bioactivity-ELISA

0.2 μ g Cynomolgus ASGR1 Protein; His Tag of per well

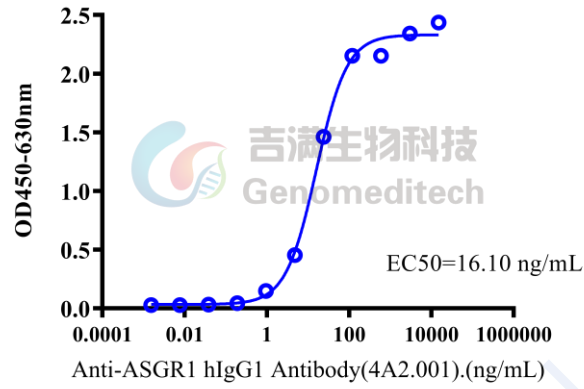


Fig. ELISA