

Product Sheet

H_CTLA4 Reporter Jurkat Cell Line

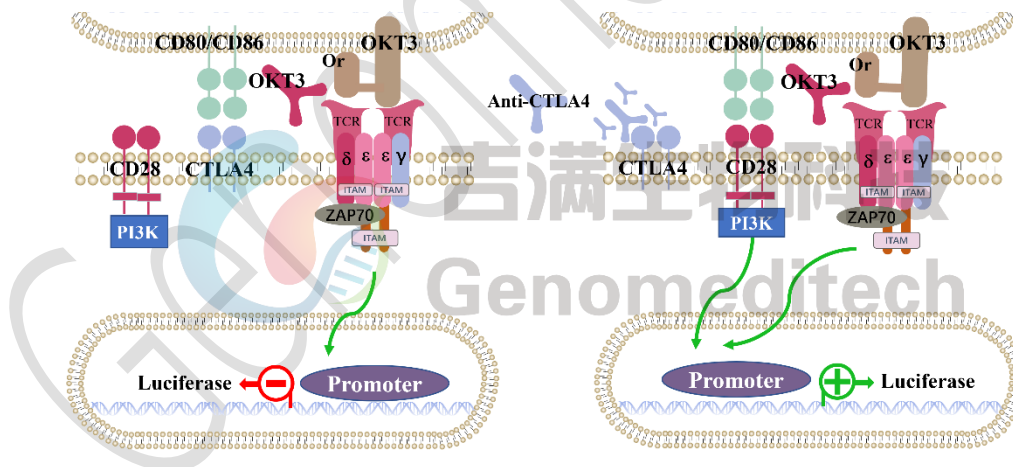
Catalog number: GM-C23902

Version 3.3.1.260630

CTLA-4 is an immune checkpoint primarily expressed on T cells, especially activated T cells and Tregs. It shares structural similarity with CD28 but binds B7-1 (CD80) and B7-2 (CD86) with higher affinity. Unlike CD28, CTLA-4 inhibits T cell activation by competing for B7, downregulating immune responses and maintaining homeostasis.

CTLA-4 acts as a negative regulator during T cell activation. It is upregulated, binds B7-1/B7-2, and recruits inhibitory molecules (e.g., SHP-2, PP2A) via ITIM/ITSM motifs. This disrupts TCR signaling, reduces T cell proliferation and cytokine production, and modulates dendritic cell function, weakening the immune response.

H_CTLA4 Reporter Jurkat Cell Line is a clonal stable Jurkat cell line constructed using lentiviral technology, constitutive expression of the CTLA4 gene, endogenous expression of the TCR-CD3 complex and CD28 gene, along with signal-dependent expression of a luciferase reporter gene. When T cells are stimulated by TCR (T-cell receptor) and CD80 binds to CD28, leading to the expression of luciferase. The CTLA4 competes with CD28 for CD80, blockade the expression of luciferase. Blockade antibodies can block this inhibitory signal transmission, restore the activation of T cells. The luciferase activity measurement indicates the activation level of the signaling pathway and can thus be used to evaluate the in vitro effects of drugs related to CTLA4.



Specifications

Quantity	5E6 Cells per vial, 1 mL
Product Format	1 vial of frozen cells
Shipping	Shipped on dry ice
Storage Conditions	Liquid nitrogen immediately upon receipt

Recovery Medium	RPMI 1640+10% FBS+1% P.S
Growth medium	RPMI 1640+10% FBS+1% P.S+3.5 µg/mL Blasticidin+0.75 µg/mL Puromycin
Note	None
Freezing Medium	90% FBS+10% DMSO
Growth properties	Suspension
Growth Conditions	37°C, 5% CO ₂

Mycoplasma Testing	The cell line has been screened to confirm the absence of Mycoplasma species.
Safety considerations	Biosafety Level 2
Note	It is recommended to expand the cell culture and store a minimum of 10 vials at an early passage for potential future use.

Materials

Reagent	Manufacturer/Catalogue No.
RPMI 1640	gibco/C11875500BT
Fetal Bovine Serum	ExCell/FSP500
Pen/Strep	Thermo/15140-122
Blasticidin	Genomeditech/ GM-040404
Puromycin	Genomeditech/ GM-040401
H_CD80 aAPC CHO-K1 Cell Line	Genomeditech/ GM-C24688
Anti-H_CTLA-4 hIgG1 Antibody(Ipilimumab)	Genomeditech/ GM-27203AB
Anti-CD3 epsilon hIgG1 Antibody [OKT-3 (muromonab)]	Genomeditech/ GM-51478AB
GMOne-Step 2.0 Luciferase Reporter Gene Assay Kit	Genomeditech/ GM-040513

Figures

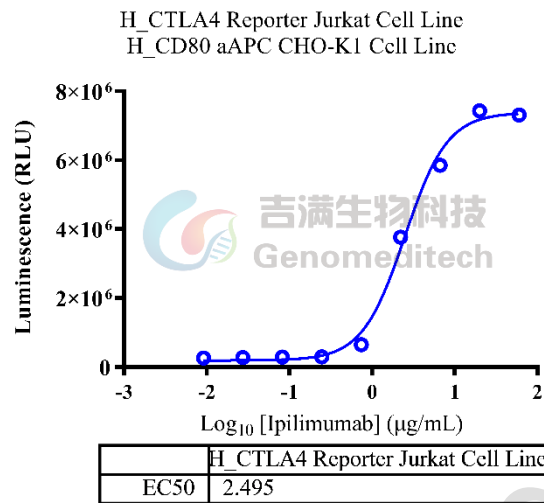


Figure 1 | Response to Anti-H_CTLA-4 hIgG1 Antibody(Ipilimumab) . The H_CD80 aAPC CHO-K1 Cell Line (Cat. [GM-C24688](#)) were seeded at a density of 1E4 cells per well in a 96-well plate and incubated overnight. The next day, serial dilutions of Anti-H_CTLA-4 hIgG1 Antibody(Ipilimumab)(Cat. [GM-27203AB](#))were incubated with 1E5 cells/well of the H_CTLA4 Reporter Jurkat Cell Line (Cat. GM-C23902) in a 96-well plate for 1 hour. And then added to the pre-seeded cells,The mixture was incubated for an additional 6 hours. Firefly luciferase activity was measured using the Luciferase Reporter Assay Kit (Genomeditech). The maximum induction fold was approximately [25.5]. Data are presented based on drug mass concentration.

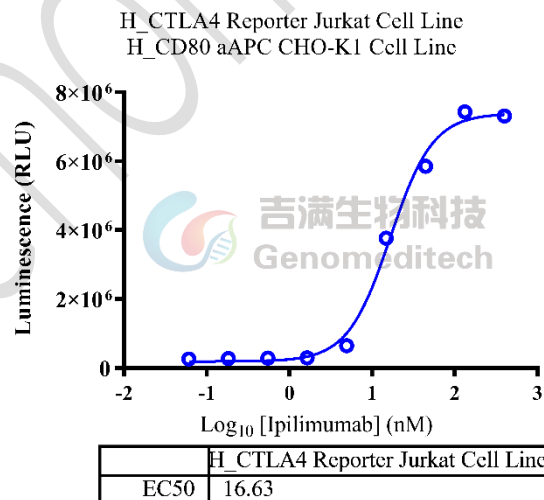


Figure 2 | Response to Anti-H_CTLA-4 hIgG1 Antibody(Ipilimumab) . The H_CD80 aAPC CHO-K1 Cell Line (Cat. [GM-C24688](#)) were seeded at a density of 1E4 cells per well in a 96-well plate and incubated overnight. The next day, serial dilutions of Anti-H_CTLA-4 hIgG1 Antibody(Ipilimumab)(Cat. [GM-27203AB](#))were incubated with 1E5 cells/well of the H_CTLA4 Reporter Jurkat Cell Line (Cat. GM-C23902) in a 96-well plate for 1 hour. And then added to the pre-seeded cells,The mixture was incubated for an additional 6 hours. Firefly luciferase activity was measured

using the Luciferase Reporter Assay Kit (Genomeditech). The maximum induction fold was approximately [25.5]. Data are presented based on drug molar concentration.

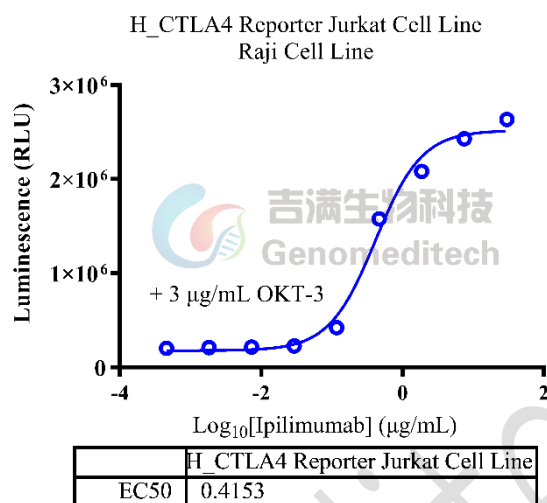


Figure 3 | Response to Anti-H_CTLA-4 hIgG1 Antibody. Serial dilutions of the Anti-H_CTLA-4 hIgG1 Antibody(Ipilimumab) (Cat. [GM-27203AB](#)) were incubated with 1E5 cells/well of the H_CTLA4 Reporter Jurkat Cell Line (Cat. GM-C23902) in a 96-well plate for 30 minutes, and then 2E4 cells/well Raji Cell Line and 300 ng/well of OKT-3 (Cat. [GM-51478AB](#)) were added. The mixture was incubated for an additional 6.5 hours. Firefly luciferase activity was measured using the Luciferase Reporter Assay Kit (Genomeditech). The results indicated a maximum blocking fold of approximately [13.3]. Data are shown by drug mass concentration.

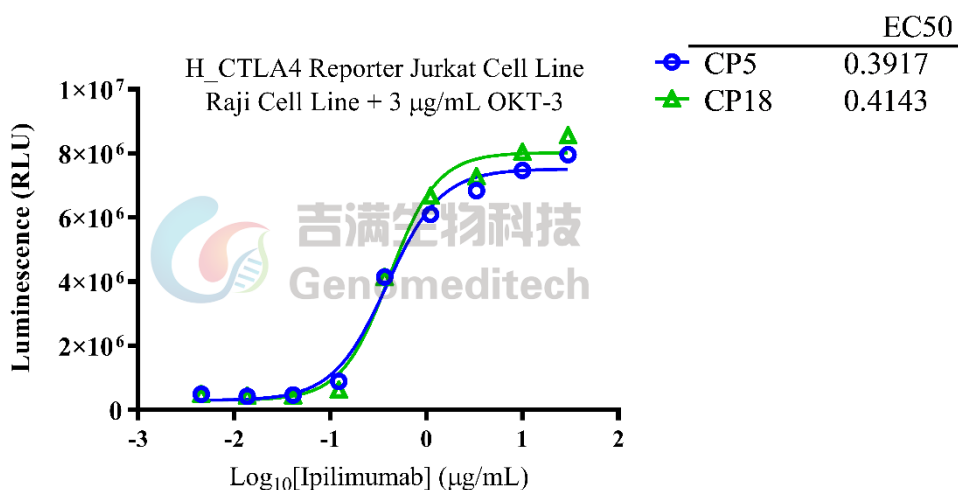


Figure 4 | The passage stability of response to Anti-H_CTLA-4 hIgG1 Antibody. Serial dilutions of the Anti-H_CTLA-4 hIgG1 Antibody(Ipilimumab) (Cat. [GM-27203AB](#)) were incubated with 1E5 cells/well of the passage 5 and 18 of H_CTLA4 Reporter Jurkat Cell Line (Cat. GM-C23902) in a 96-well plate for 30 minutes, and then 2E4 cells/well Raji Cell Line and 300 ng/well of OKT-3 (Cat. [GM-51478AB](#)) were added. The mixture was incubated for an

additional 6.5 hours. Firefly luciferase activity is then measured using the GMOne-Step Luciferase Reporter Gene Assay Kit (Cat. GM-040503). Data are shown by drug mass concentration.

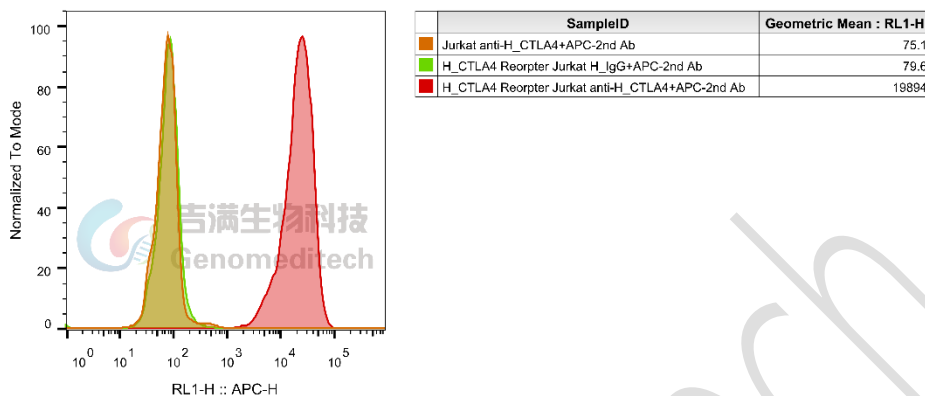


Figure 5 | H_CTLA4 Reporter Jurkat Cell Line (Cat. GM-C23902) was determined by flow cytometry using Anti-H_CTLA-4 hIgG1 Antibody(Ipilimumab) (Cat. GM-27203AB).

Cell Recovery

Recovery Medium: RPMI 1640+10% FBS+1% P.S

To insure the highest level of viability, thaw the vial and initiate the culture as soon as possible upon receipt. If upon arrival, continued storage of the frozen culture is necessary, it should be stored in liquid nitrogen vapor phase and not at -70°C. Storage at -70°C will result in loss of viability.

- Thaw the vial by gentle agitation in a 37°C water bath. To reduce the possibility of contamination, keep the O-ring and cap out of the water. Thawing should be rapid (approximately 2 - 3 minutes).
- Remove the vial from the water bath as soon as the contents are thawed, and decontaminate by dipping in or spraying with 70% ethanol. All of the operations from this point on should be carried out under strict aseptic conditions.
- Transfer the vial contents to a centrifuge tube containing 5.0 mL complete culture medium. And spin at approximately 176 x g for 5 minutes. Discard supernatant.
- Resuspend cell pellet with the recommended complete medium. And dispense the suspension into 1 - 2 T-25 culture flasks.
- Incubate the culture at 37°C in a suitable incubator. A 5% CO₂ in air atmosphere is recommended if using the medium described on this product sheet.

Cell Freezing

Freezing Medium: 90% FBS+10% DMSO

- Centrifuge at 176 x g for 3 minutes to collect cells.
- Resuspend the cells in pre-cooled freezing medium and adjust the cell density to 5E6 cells/mL.

- c) Aliquot 1 mL into each vial.
- d) Place the vial in a controlled-rate freezing container and store at -80°C for at least 1 day, then transfer to liquid nitrogen as soon as possible.

Cell passage

Growth medium: RPMI 1640+10% FBS+1% P.S+3.5 µg/mL Blasticidin+0.75 µg/mL Puromycin

Approximately 48-72 hours after the initial thawing, the cells can be passaged for the first time. After this initial passage, the culture medium can be adjusted to growth medium supplemented with antibiotics. If cells are not passaged within 48 hours, it is recommended to add some fresh recovery medium and place the flask horizontally.

- a) When the cell density reaches 1.5 - 2E6 cells/mL, subculture the cells. Do not allow the cell density to exceed 2E6 cells/mL.
- b) It is recommended to use T-25 flasks for subculturing.
- c) These cells are suspension cells, and it is recommended to use the "half-medium change" method to maintain optimal cell conditions during passaging.
- d) During passaging, you can directly add fresh growth medium to the culture flask, gently pipette to resuspend the cells, and then transfer the cell suspension to a new T-25 flask for continued culture.

Subcultivation Ratio: Maintain cultures at a cell concentration between 3E5 and 1E6 viable cells/mL.

Medium Renewal: Every 2 to 3 days

Notes

- a) These cells are sensitive to density, so please ensure that the cell density is maintained within an appropriate range during culture and subculturing.
- b) During the first passage, pay attention to the nutrient supply; if not subculturing, make sure to add fresh recovery medium every other day as needed.

Related Products

CTLA4:CD80:CD86	
H_CD80 aAPC CHO-K1 Cell Line	H_CD80 PDL1 aAPC CHO-K1 Cell Line
H_CTLA4 PD-1 Reporter Cell Line	Canine_CTLA4 CHO-K1 Cell Line
Cynomolgus_CTLA4 HEK-293 Cell Line	H_CTLA4 (Full-Length) CHO-K1 Cell Line
H_CTLA4 CHO-K1 Cell Line	H_CTLA4 HEK-293 Cell Line
H_CTLA4 Jurkat Cell Line	H_CTLA4 PD-1 CHO-K1 Cell Line (High Ratio)
H_CTLA4 PD-1 CHO-K1 Cell Line (Low Ratio)	
Anti-CTLA4 hIgG1 Reference Antibody (Ipibio)	Anti-CTLA-4/PD-1 hIgG1 Bispecific Antibody(Cadonilimab)
Anti-CTLA4×PD-1 hIgG1 Reference Antibody (Cadbio)	Anti-H_CD80 hIgG1 Antibody(Galiximab)
Anti-H_CTLA-4 hIgG1 Antibody(Ipilimumab)	Anti-mouse CTLA4 mIgG2b Antibody(9D9)
Anti-mouse CTLA4 Syrian Hamster IgG2 Antibody(9H10)	

Biotinylated Cynomolgus CTLA4 Protein; His-Avi Tag	Biotinylated Mouse CTLA4 Protein; His-Avi Tag
Cynomolgus CTLA4 Protein; His Tag	Human CD80 Protein; His Tag
Human CTLA4 Protein; His Tag	Mouse CTLA4 Protein; His Tag

License Agreement:

By purchasing and using this cell line product, the user voluntarily agrees to accept and abide by the following policies:

- This cell line product is restricted to research use only and shall not be used for any commercial purposes.
- This product is strictly prohibited from being used in the diagnosis or treatment of human or animal diseases, and shall not be directly used in experiments involving humans.
- Users and their contractors engaged for their benefit may use this material and its derivatives only within the agreed research scope; modification of the material is not permitted, nor may it be distributed, sold, transferred, or otherwise provided to any other entity (including affiliates).
- If use beyond the above scope is required, prior written permission from Genomeditech (Shanghai) Co.,Ltd. must be obtained. For details, please contact Genomeditech (Shanghai) Co.,Ltd.