

Product Sheet

Membrane bound H_KLK2(AA19-261) LnCap Cell Line

Catalog number: GM-C44125

Version 3.3.1.260526

Description	Membrane bound H_KLK2(AA19-261) LnCap Cell Line is a clonal stable LnCap cell line that constitutively expresses the human KLK2(AA19-261) gene, constructed using lentiviral technology.
Quantity	5E6 Cells per vial, 1 mL
Product Format	1 vial of frozen cells
Shipping	Shipped on dry ice
Storage Conditions	Liquid nitrogen immediately upon receipt
Target	H_KLK2(AA19-261)
Gene ID/Uniprot ID	P20151-1
Host Cell	LnCap Cell Line
Recovery Medium	RPMI 1640+10% FBS+1% P.S
Growth medium	RPMI 1640+10% FBS+1% P.S+2.5 µg/mL Puromycin
Note	None
Freezing Medium	90% FBS+10% DMSO
Growth properties	Adherent
Growth Conditions	37°C, 5% CO ₂
Mycoplasma Testing	The cell line has been screened to confirm the absence of Mycoplasma species.
Safety considerations	Biosafety Level 2
Note	It is recommended to expand the cell culture and store a minimum of 10 vials at an early passage for potential future use.

Materials

Reagent	Manufacturer/Catalogue No.
RPMI 1640	gibco/C11875500BT
Fetal Bovine Serum	ExCell/FSP500
Pen/Strep	Thermo/15140-122
Puromycin	Genomeditech/GM-040401
Anti-KLK2 hIgG1 Antibody(Hu11B6)	Genomeditech/GM-88129AB

Figures

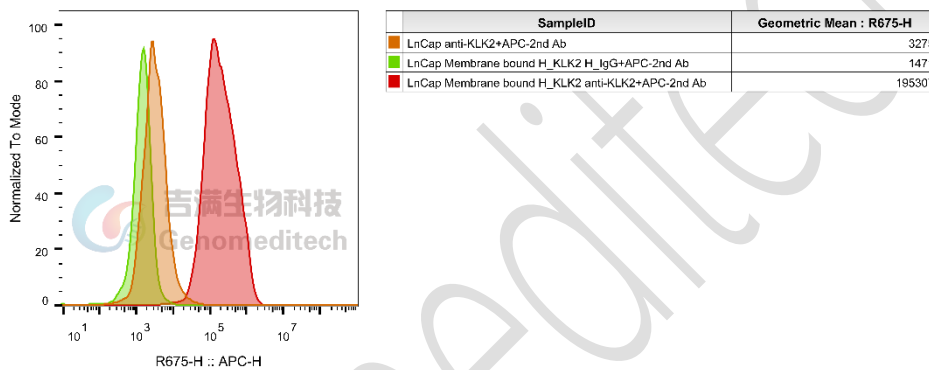


Figure 1 | Membrane bound H_KLK2(AA19-261) LnCap Cell Line (Cat. GM-C44125) was determined by flow cytometry using Anti-KLK2 hIgG1 Antibody(Hu11B6) (Cat. GM-88129AB).

Cell Recovery

Recovery Medium: RPMI 1640+10% FBS+1% P.S

To insure the highest level of viability, thaw the vial and initiate the culture as soon as possible upon receipt. If upon arrival, continued storage of the frozen culture is necessary, it should be stored in liquid nitrogen vapor phase and not at -70°C. Storage at -70°C will result in loss of viability.

- Thaw the vial by gentle agitation in a 37°C water bath. To reduce the possibility of contamination, keep the O-ring and cap out of the water. Thawing should be rapid (approximately 2 - 3 minutes).
- Remove the vial from the water bath as soon as the contents are thawed, and decontaminate by dipping in or spraying with 70% ethanol. All of the operations from this point on should be carried out under strict aseptic conditions.
- Transfer the vial contents to a centrifuge tube containing 5.0 mL complete culture medium. And spin at approximately 176 x g for 5 minutes. Discard supernatant.
- Resuspend cell pellet with the recommended complete medium. And dispense the suspension into an appropriate culture flask and initially place the flask in an upright position after thawing.

- e) Incubate the culture at 37°C in a suitable incubator. A 5% CO₂ in air atmosphere is recommended if using the medium described on this product sheet.

Cell Freezing

Freezing Medium: 90% FBS+10% DMSO

- Centrifuge at 176 x g for 3 minutes to collect cells.
- Resuspend the cells in pre-cooled freezing medium and adjust the cell density to 5E6 cells/mL.
- Aliquot 1 mL into each vial.
- Place the vial in a controlled-rate freezing container and store at -80°C for at least 1 day, then transfer to liquid nitrogen as soon as possible.

Cell passage

Growth medium: RPMI 1640+10% FBS+1% P.S+2.5 µg/mL Puromycin

For the first 1 to 2 passages post-resuscitation, use the recovery medium. Once the cells have stabilized, switch to a growth medium.

- Subculturing is necessary when the cell density reaches 80%. It is recommended to perform subculturing at a ratio of 1:2 every 4-5 days. Ensure that the density does not exceed 90%, as overcrowding can lead to reduced viability due to compression.
- Remove and discard culture medium.
- Briefly rinse the cell layer with PBS to remove all traces of serum that contains trypsin inhibitor.
- Add 1.0 mL of 0.25% (w/v) Trypsin-EDTA solution to dish and observe cells under an inverted microscope until cell layer is dispersed (usually within 3 to 5 minutes at 37°C).
- Note: To avoid clumping do not agitate the cells by hitting or shaking the flask while waiting for the cells to detach. Cells that are difficult to detach may be placed at 37°C to facilitate dispersal.
- Add 2.0 mL of growth medium to mix well and aspirate cells by gently pipetting.
- After centrifugation, resuspend the pellet and add appropriate aliquots of the cell suspension to new culture vessels.
- Incubate cultures at 37°C.

Subcultivation Ratio: A subcultivation ratio of 1:2 is recommended

Medium Renewal: Every 4 to 5 days

Notes

- Cells immediately after thawing typically contain a certain proportion of dead cells, which is a normal phenomenon. With appropriate adjustment and recovery, cell viability generally improves markedly. Once the culture stabilizes, the proportion of dead cells decreases after subsequent passages, and the cell growth rate becomes more consistent.
- Standard tissue culture (TC)-treated culture flasks or dishes may not provide optimal cell adhesion, which can increase the difficulty of cell culture. It is therefore recommended to pre-coat the culture surface with poly-L-lysine solution to enhance cell attachment.

- c) FBS should be heat-inactivated at 56 °C for 30 minutes in a water bath. This process inactivates complement and some viruses, while generally having minimal impact on the activity of most growth factors and cytokines.

Sequence

KLK2 P20151-1

PLIQSRIVGGWECEKHSQPWQVAVYSHGWAHCGGVLVHPQWVLTAAHCLKKNSQVWLGRHNLFEPEDTG
 QRVPVSHSFPHPLYNMSLLKHQSLRPDEDSSHDLMMLLRLSEPAKITDVVKVLGLPTQEPALGTTCYASGWGSI
 EPEEFLRPRSLQCVSLLHLSNDM CARAYSEKVTEFMLCAGLWTGGKDTCGGDSGGPLVCNGVLQGITSWGP
 EPCALPEKPAVYTKVVHYRKWIKDTIAANP

Related Products

FOLH1(PSMA)	
Cynomolgus_FOLH1(PSMA) CHO-K1 Cell Line	H_FOLH1(PSMA) CHO-K1 Cell Line
H_FOLH1(PSMA) HEK-293 Cell Line	H_FOLH1(PSMA) PC-3 Cell Line
H_FOLH1(PSMA) RM-1 Cell Line	
Anti-FOLH1(PSMA) hIgG1 Antibody(Rosopatamab)	Anti-FOLH1(PSMA) hIgG1 Reference Antibody (Rosobio)
Cynomolgus FOLH1(PSMA) Protein; His Tag	
ADC Related Product	
Anti-DXD Mouse IgG1 Antibody (23E21C5)	Anti-DXD Mouse IgG1 Antibody (4A5A12)
Anti-Dxd Mouse IgG2a Antibody (17D6A4)	Anti-Eribulin Mouse IgG2a Antibody (10F8G4)
Anti-MMAE Mouse IgG1 Antibody (11C10E3)	Anti-MMAE Mouse IgG2a Antibody (17A1K11)
Anti-MMAE Mouse IgG2a Antibody (8F6A3)	Anti-SN38 Mouse IgG1 Antibody(59H11C7)
Mouse anti Human IgG1-DXD(Dar8)	Mouse anti Human IgG1-MMAE(Dar4)
Human IgG1 Isotype-DXD (Dar8)	Human IgG1 Isotype-Eribulin (Dar4)
Human IgG1 Isotype-MMAE (Dar4)	
Recombinant DT3C Protein	
AR(NR3C4)	
H_AR HEK-293 Cell Line	
KLK2 KLK3	
Membrane bound H_KLK2(AA19-261) 22RV1 Cell Line	Membrane bound H_KLK2(AA19-261) CHO-K1 Cell Line
Membrane bound H_KLK2(AA19-261) HEK-293 Cell Line	Membrane bound H_KLK2(AA25-261) CHO-K1 Cell Line
Membrane bound H_KLK2(AA25-261) CT26 Cell Line	Membrane bound H_KLK2(AA25-261) HEK-293 Cell Line
Membrane bound H_KLK2(AA25-261) MC38 Cell Line (Low Expression)	
Anti-KLK2 hIgG1 Antibody(Hu11B6)	
Biotinylated Human KLK2 Protein; His-Avi Tag	
ACP3	
Flag-H_ACP3 HCT116 Cell Line	Flag-H_ACP3 HT-1080 Cell Line
H_ACP3 HCT116 Cell Line	H_ACP3 HT-1080 Cell Line

License Agreement:

By purchasing and using this cell line product, the user voluntarily agrees to accept and abide by the following policies:

- This cell line product is restricted to research use only and shall not be used for any commercial purposes.
- This product is strictly prohibited from being used in the diagnosis or treatment of human or animal diseases, and shall not be directly used in experiments involving humans.
- Users and their contractors engaged for their benefit may use this material and its derivatives only within the agreed research scope; modification of the material is not permitted, nor may it be distributed, sold, transferred, or otherwise provided to any other entity (including affiliates).
- If use beyond the above scope is required, prior written permission from Genomeditech (Shanghai) Co.,Ltd. must be obtained. For details, please contact Genomeditech (Shanghai) Co.,Ltd.

Genomeditech