

# Anti-mouse CDCP1 mIgG2a Antibody (41A10)

## Product information

GM-88177AB-10	10 µg
GM-88177AB-100	100 µg
GM-88177AB-1000	1 mg

## Antibody Information

Species Reactivity	Mouse
Clone	41A10
Source/Isotype	Mouse IgG2a, Kappa
Application	Flow Cytometry
Target	Detects CDCP1
Gene	CDCP1
Other Names	CD318, TRASK, UNQ2486, PRO5773
Gene ID	109332(Mouse)
Background	<p>The anti-CDCP1 antibody (targeting CUB domain-containing protein 1) holds significant research value in oncology. CDCP1 is highly expressed in various malignant tumors (e.g., lung, breast, and colorectal cancer) and is closely associated with tumor metastasis, drug resistance, and poor prognosis.</p> <p>The anti-CDCP1 antibody can specifically block CDCP1 signaling pathways, inhibit tumor cell migration and invasion, offering a potential strategy for targeted therapy. Moreover, it can be used in immunohistochemistry, flow cytometry, and other assays to aid tumor diagnosis and classification. As a research tool, it helps elucidate the molecular mechanisms of CDCP1 in tumor progression, facilitating the development of novel anticancer drugs.</p>
Storage	Store at 2-8°C short term (1-2 weeks). Store at ≤ -20°C long term. Avoid repeated freeze-thaw.
Formulation	Supplied as a 0.2 µm filtered solution of PBS, pH7.2-7.4.
Endotoxin	< 1 EU/mg, determined by LAL gel clotting assay

## Data Examples

### Flow Cytometry

Mouse\_CDPC1 HEK-293 Cell Line (Catalog # GM-C41794) was stained with Anti-mouse CDCP1 mIgG2a Antibody (41A10) (Catalog # GM-88177AB) or isotype control antibody, followed by anti-Mouse IgG APC-conjugated Secondary Antibody.

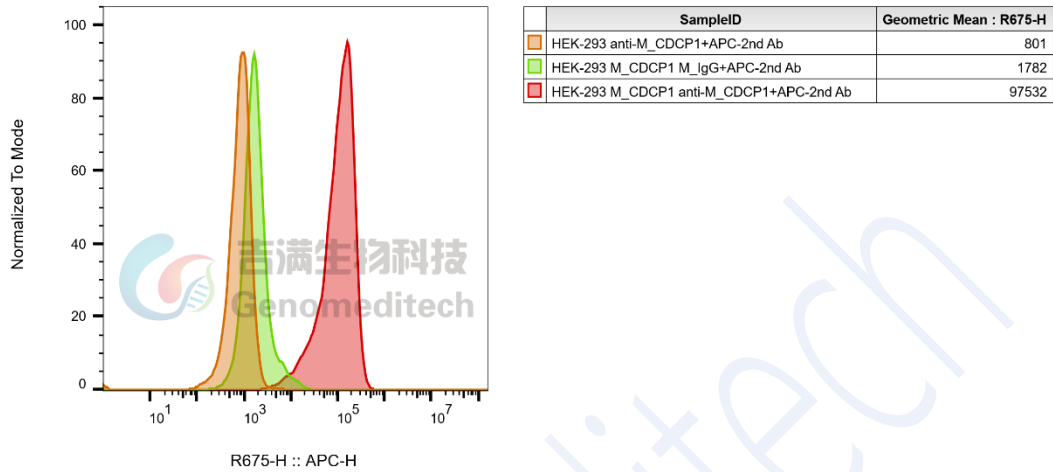


Fig. FACS