

Product Sheet

H_PDL1 CT26(mouse PDL1 KO) Cell Line

Catalog number: GM-C43929

Version 3.3.1.260526

Description	H_PDL1 CT26(mouse PDL1 KO) Cell Line is a clonal stable CT26(mouse PDL1 KO) cell line that constitutively expresses the human PDL1 gene, constructed using lentiviral technology.
Quantity	5E6 Cells per vial, 1 mL
Product Format	1 vial of frozen cells
Shipping	Shipped on dry ice
Storage Conditions	Liquid nitrogen immediately upon receipt
Target	H_PDL1
Gene ID/Uniprot ID	Q9NZQ7-1 2000-10-01 v1
Host Cell	CT26(mouse PDL1 KO)
Recovery Medium	RPMI 1640+10% FBS+1% P.S
Growth medium	RPMI 1640+10% FBS+1% P.S+4 µg/mL Puromycin
Note	None
Freezing Medium	90% FBS+10% DMSO
Growth properties	Adherent
Growth Conditions	37°C, 5% CO ₂
Mycoplasma Testing	The cell line has been screened to confirm the absence of Mycoplasma species.
Safety considerations	Biosafety Level 2
Note	It is recommended to expand the cell culture and store a minimum of 10 vials at an early passage for potential future use.

Materials

Reagent	Manufacturer/Catalogue No.
RPMI 1640	gibco/C11875500BT
Fetal Bovine Serum	ExCell/FSP500
Pen/Strep	Thermo/15140-122
Puromycin	Genomeditech/GM-040401
Anti-PDL1 hIgG4 Reference Antibody(Adebio)	Genomeditech/GM-86853MAB

Figures

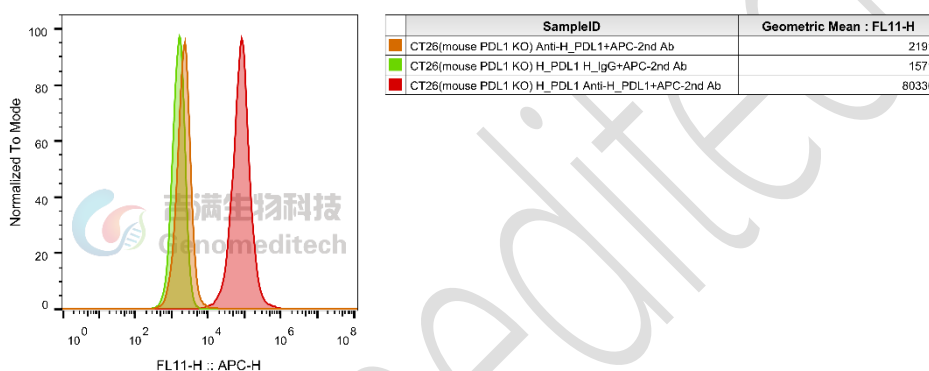


Figure 1 | H_PDL1 CT26(mouse PDL1 KO) Cell Line (Cat. GM-C43929) was determined by flow cytometry using Anti-PDL1 hIgG4 Reference Antibody(Adebio) (Cat. [GM-86853MAB](#)).

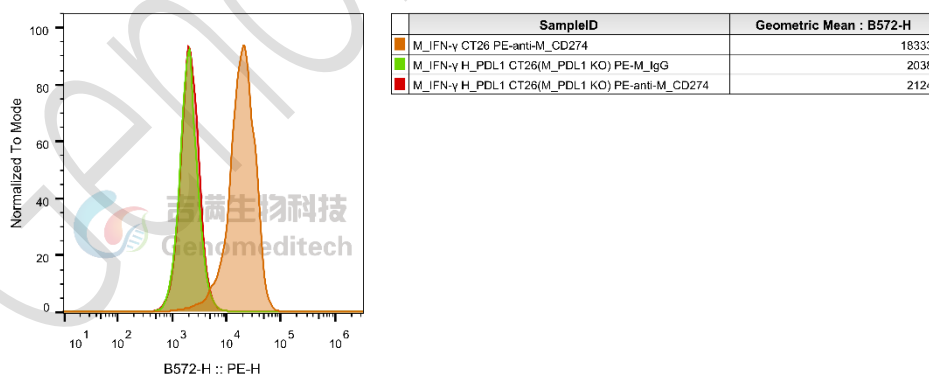


Figure 2 | H_PDL1 CT26(mouse PDL1 KO) Cell Line (Cat. GM-C43929) was determined by flow cytometry using PE anti-mouse CD274 (B7-H1, PD-L1) Antibody(Biolegend/124307).

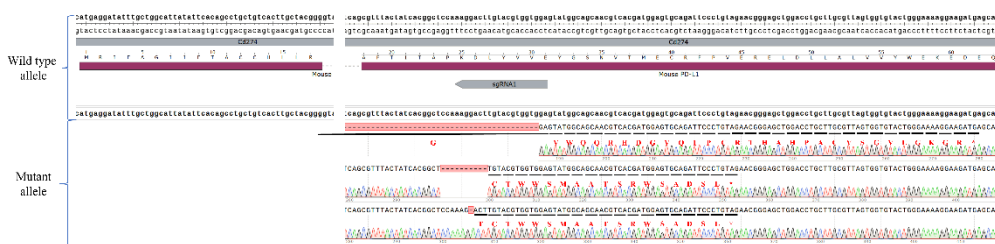


Figure 3 | The Sanger sequencing of the H_PDL1 CT26(mouse PDL1 KO) Cell Line showed successful knockout of PDL1.

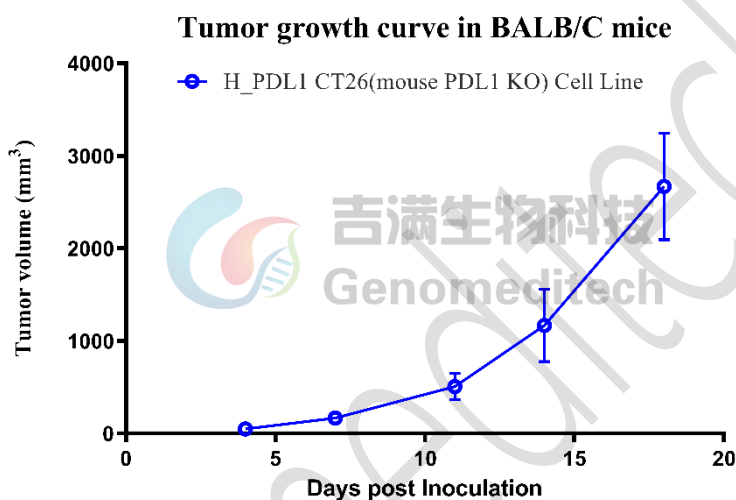


Figure 4 | Tumor growth curves of H_PDL1 CT26(mouse PDL1 KO) in BALB/C mice. H_PDL1 CT26(mouse PDL1 KO) cells (1×10^6 per mouse) were subcutaneously inoculated into BALB/C mice (female, 8 weeks old, $n = 3$). Tumor volume was measured twice per week and is presented as mean \pm SEM.

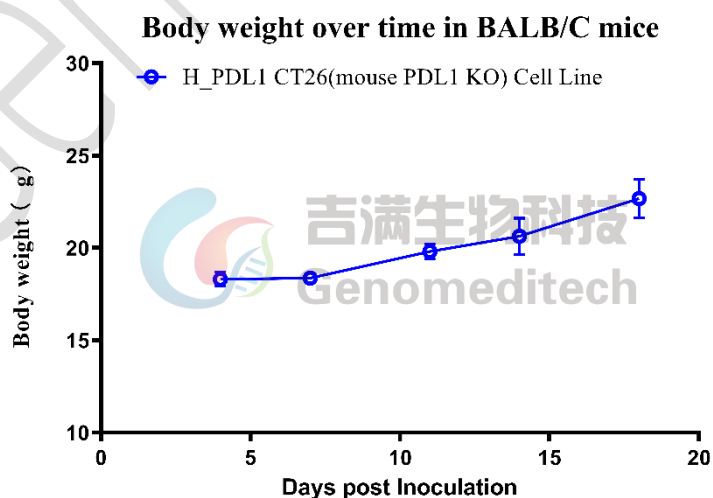


Figure 5 | Body weight changes after implantation of H_PDL1 CT26(mouse PDL1 KO) in BALB/C mice. Under the same conditions, body weight was measured twice per week and is presented as mean \pm SEM.

Cell Recovery

Recovery Medium: RPMI 1640+10% FBS+1% P.S

To insure the highest level of viability, thaw the vial and initiate the culture as soon as possible upon receipt. If upon arrival, continued storage of the frozen culture is necessary, it should be stored in liquid nitrogen vapor phase and not at -70°C . Storage at -70°C will result in loss of viability.

- a) Thaw the vial by gentle agitation in a 37°C water bath. To reduce the possibility of contamination, keep the O-ring and cap out of the water. Thawing should be rapid (approximately 2 - 3 minutes).
- b) Remove the vial from the water bath as soon as the contents are thawed, and decontaminate by dipping in or spraying with 70% ethanol. All of the operations from this point on should be carried out under strict aseptic conditions.
- c) Transfer the vial contents to a centrifuge tube containing 5.0 mL complete culture medium and spin at approximately $176 \times g$ for 5 minutes. Discard supernatant.
- d) Resuspend cell pellet with the recommended recovery medium. And dispense into appropriate culture dishes.
- e) Incubate the culture at 37°C in a suitable incubator. A 5% CO_2 in air atmosphere is recommended if using the medium described on this product sheet.

Cell Freezing

Freezing Medium: 90% FBS+10% DMSO

- a) Centrifuge at $176 \times g$ for 3 minutes to collect cells.
- b) Resuspend the cells in pre-cooled freezing medium and adjust the cell density to 5×10^6 cells/mL.
- c) Aliquot 1 mL into each vial.
- d) Place the vial in a controlled-rate freezing container and store at -80°C for at least 1 day, then transfer to liquid nitrogen as soon as possible.

Cell passage

Growth medium: RPMI 1640+10% FBS+1% P.S+4 $\mu\text{g}/\text{mL}$ Puromycin

For the first 1 to 2 passages post-resuscitation, use the recovery medium. Once the cells have stabilized, switch to a growth medium.

- a) Remove and discard culture medium.
- b) Briefly rinse the cell layer with PBS to remove all traces of serum that contains trypsin inhibitor.
- c) Add 1.0 mL of 0.25% (w/v) Trypsin-EDTA solution to dish and observe cells under an inverted microscope until cell layer is dispersed (usually within 30 to 60 seconds at 37°C).
- d) Note: To avoid clumping do not agitate the cells by hitting or shaking the flask while waiting for the cells to detach. Cells that are difficult to detach may be placed at 37°C to facilitate dispersal.
- e) Add 2.0 mL of growth medium to mix well and aspirate cells by gently pipetting.
- f) After centrifugation, resuspend the pellet and add appropriate aliquots of the cell suspension to new culture vessels.
- g) Incubate cultures at 37°C .

Subcultivation Ratio: A subcultivation ratio of 1:3 - 1:5 is recommended

Medium Renewal: Every 2 to 3 days

Notes

- a) After the stabilization of the cell condition, there will be fewer dead cells post-passage, the cell growth rate will tend to stabilize, cell morphology will become uniform, and the cells will appear robust.

Sequence

PDL1 Q9NZQ7-1 2000-10-01 v1

MRIFAVFIFMTYWHLNNAFTVTVPKDLYVVEYGSNMTIECKFPVEKQLDLAALIVYWEMEDKNIIQFVHGEE
 DLKVQHSSYRQRARLLKDQLSLGNAALQITDVKLQDAGVYRCMISYGGADYKRITVKVNAPYNKINQRILV
 VDPVTSEHELTCQAEGYPKAEVIWTSSDHQVLSGKTTTTNSKREEKLFNVTSTLRINTTTNEIFYCTFRRLDPE
 ENHTAELVIPELPLAHPNERTHLVILGAILLCLGVALTFIFRLRKGRMMDVKKCGIQDTNSKKQSDTHLEET

Related Products

PD-1:PD-L1(B7-H1):PDL2	
Mouse_PDL1 KO CT26 Cell Line	Mouse_PDL1 KO LLC1 Cell Line
Mouse_PDL1 KO MC38 Cell Line	aAPC(OKT3) PDL1 CHO-K1 Cell Line
H_PD-1 Reporter Jurkat Cell Line	H_PD1 SHP1 Reporter Jurkat Cell line
H_PD1 SHP2 Reporter Jurkat Cell Line	H_PDCD1LG2(PDL2) aAPC CHO-K1 Cell Line
Mouse PDL1 aAPC CHO-K1 Cell Line	Mouse_PD-1 Reporter Jurkat Cell Line
Canine_PD-1 CHO-K1 Cell Line	Canine_PD-1 HEK-293 Cell Line
Cynomolgus_PD1 CHO-K1 Cell Line	Cynomolgus_PD-L1 HEK-293 Cell Line
H_CD274(PD-L1) CHO-K1 Cell Line	H_CD274(PD-L1) MC38 Cell Line
H_PDCD1(PD-1) CHO-K1 Cell Line	H_PDCD1(PD-1) HEK-293 Cell Line
H_PDCD1LG2(PDL2) CHO-K1 Cell Line	H_PD-L1 HEK-293 Cell Line
H_PDL1 LLC1(mouse_PDL1 KO) Cell Line	H_PDL1 LLC1(mouse_PDL1 KO) Cell Line
H_PDL1 MC38(mouse_PDL1 KO) Cell Line	H_PD-L1 Raji Cell Line
M_PDCD1(PD-1) CHO-K1 Cell Line	Rhesus_PDCD1(PD-1) CHO-K1 Cell Line
Anti-Canine_PD1 mIgG2a Antibody(4F12-E6)	Anti-CTLA-4/PD-1 hIgG1 Bispecific Antibody(Cadonilimab)
Anti-CTLA4×PD-1 hIgG1 Reference Antibody (Cadbio)	Anti-H_CD274(PDL1) hIgG1 Antibody(Atezolizumab)
Anti-H_PDCD1(PD1) hIgG1 Antibody(Budigalimab)	Anti-H_PDCD1LG2 mIgG1 Antibody(3G2)
Anti-H_PDL1 hIgG1 Reference Antibody(Atezbio)	Anti-mouse PD1 RIgG2a Antibody(RMP1-14)
Anti-mouse PD-L1 mIgG1 Antibody(10F.9G2)	Anti-Mouse_PD1 mIgG1 Antibody(29F.1A12)
Anti-mouse_PD1 mIgG1 Antibody(RMP1-14)	Anti-Mouse_PD1×VEGF hIgG1 Bispecific Antibody
Anti-PD1 hIgG1 Reference Antibody (Perbio)	Anti-PD1 hIgG1 Reference Antibody(Rosnbio)
Anti-PD1 hIgG4 Antibody(Pembrolizumab)	Anti-PD1 hIgG4 Reference Antibody (Nivbio)
Anti-PD1 hIgG4 Reference Antibody (Pembio)	Anti-PD1 hIgG4 Reference Antibody (Sintbio)
Anti-PD-1 hIgG4 Reference Antibody (Torbio)	Anti-PD1 hIgG4 Reference Antibody(Cambio)
Anti-PD-1 hIgG4 Reference Antibody(Tislbio)	Anti-PD1-IL2v Fusion hIgG1 Antibody(2149)

Anti-PD1-IL2v Fusion hIgG1 Antibody(KY-0118)	Anti-PD-L1 hIgG1 Reference Antibody(Avebio)
Anti-PDL1 hIgG4 Reference Antibody(Adebio)	Anti-PD-L2 hIgG1 Antibody(Hz25G4-1.1)
Anti-VEGF×PD1 hIgG1 Reference Antibody (Ivobio)	Anti-VEGF×PD-L1 hIgG1 Bispecific Antibody (Pumibio)
Anti-VEGF×PD-L1 hIgG1 Bispecific Antibody (pumitamig)	
Biotinylated Human PD1 Protein; His-Avi Tag	Biotinylated Human PDL1 Protein; His-Avi Tag
Canine PD1 Protein; hFc Tag	Cynomolgus PDL1 Protein; His Tag
Human PD1 Protein; hFc Tag	Human PD1 Protein; His Tag
Human PDL1 Protein; His Tag	Human PDL1 Protein; mFc Tag
Human PDL2 Protein; mFc Tag	Mouse PDL1 Protein; His Tag

License Agreement:

By purchasing and using this cell line product, the user voluntarily agrees to accept and abide by the following policies:

- This cell line product is restricted to research use only and shall not be used for any commercial purposes.
- This product is strictly prohibited from being used in the diagnosis or treatment of human or animal diseases, and shall not be directly used in experiments involving humans.
- Users and their contractors engaged for their benefit may use this material and its derivatives only within the agreed research scope; modification of the material is not permitted, nor may it be distributed, sold, transferred, or otherwise provided to any other entity (including affiliates).
- If use beyond the above scope is required, prior written permission from Genomeditech (Shanghai) Co.,Ltd. must be obtained. For details, please contact Genomeditech (Shanghai) Co.,Ltd.