

Product Sheet

H_α4β7 CHO-K1 Cell Line

Catalog number: GM-C44962

Version 3.3.1.260615

Description	H_α4β7 CHO-K1 Cell Line is a clonal stable CHO-K1 Cell line that constitutively expresses the Human ITGA4 and ITGB7 genes, constructed using lentiviral technology.
Quantity	5E6 Cells per vial, 1 mL
Product Format	1 vial of frozen cells
Shipping	Shipped on dry ice
Storage Conditions	Liquid nitrogen immediately upon receipt
Target	Human_ITGA4 & Human_ITGB7
Gene ID/Uniprot ID	P13612-1 & P26010-1
Host Cell	CHO-K1
Recovery Medium	F12K+10% FBS+1% P.S
Growth medium	F12K+10% FBS+1% P.S+100 µg/mL Hygromycin+4 µg/mL Puromycin
Note	None
Freezing Medium	90% FBS+10% DMSO
Growth properties	Adherent
Growth Conditions	37°C, 5% CO ₂
Mycoplasma Testing	The cell line has been screened to confirm the absence of Mycoplasma species.
Safety considerations	Biosafety Level 2
Note	It is recommended to expand the cell culture and store a minimum of 10 vials at an early passage for potential future use.

Materials

Reagent	Manufacturer/Catalogue No.
F12K	BOSTER/PYG0036
Fetal Bovine Serum	ExCell/FSP500
Pen/Strep	Thermo/15140-122
Hygromycin	Genomeditech/ GM-040403
Puromycin	Genomeditech/ GM-040401
Anti-Integrin $\alpha 4\beta 7$ hIgG1 Reference Antibody (Vedobio)	Genomeditech/ GM-87988MAB
Integrin alpha 4/CD49D Rat mAb	Aladdin/Ab110790
Integrin beta 7 Rat mAb (FITC)	Aladdin/Ab190040

Figures

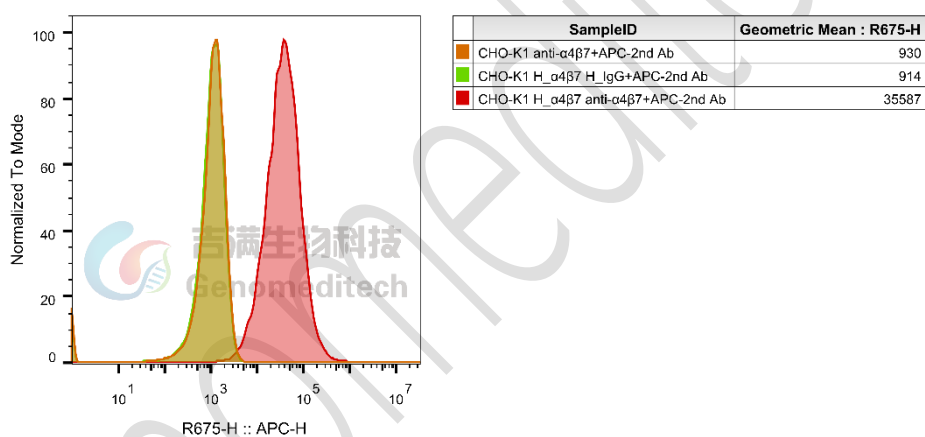


Figure 1 | H_ $\alpha 4\beta 7$ CHO-K1 Cell Line (Cat.GM-C44962) was determined by flow cytometry using Anti-Integrin $\alpha 4\beta 7$ hIgG1 Reference Antibody (Vedobio) (Cat. [GM-87988MAB](#)).

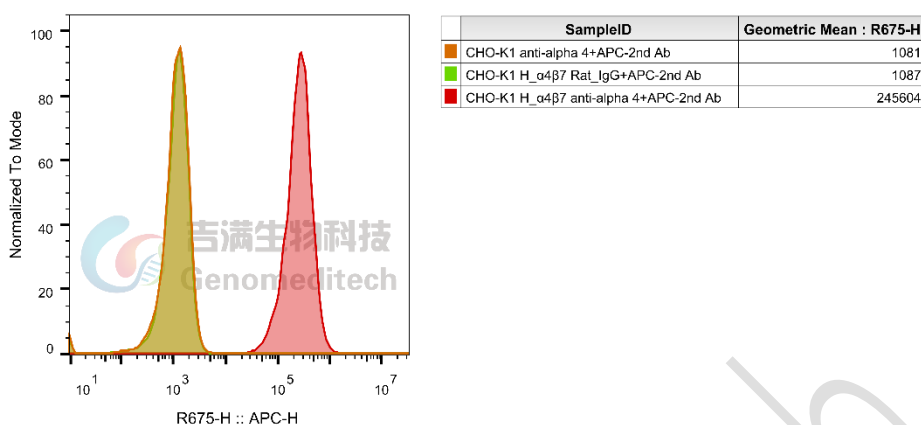


Figure 2 | H_α4β7 CHO-K1 Cell Line (Cat.GM-C44962) was determined by flow cytometry using Integrin alpha 4/CD49D Rat mAb (Aladdin/Ab110790).

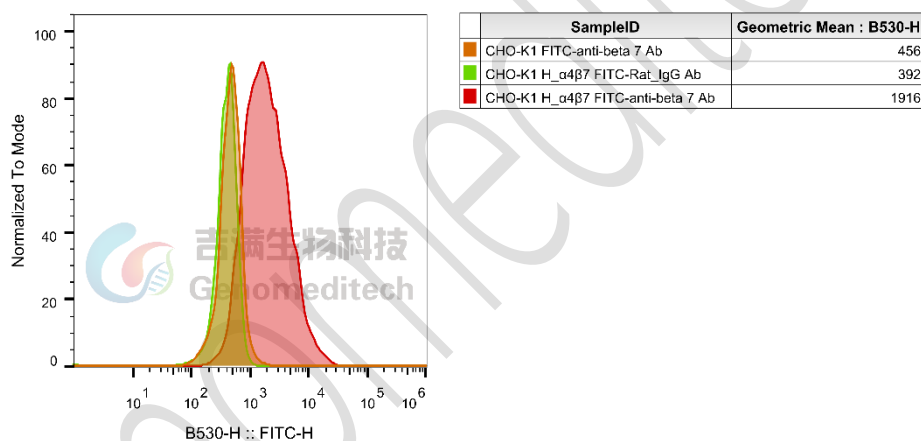


Figure 3 | H_α4β7 CHO-K1 Cell Line (Cat.GM-C44962) was determined by flow cytometry using Integrin beta 7 Rat mAb (FITC) (Aladdin/Ab190040).

Cell Recovery

Recovery Medium: F12K+10% FBS+1% P.S

To insure the highest level of viability, thaw the vial and initiate the culture as soon as possible upon receipt. If upon arrival, continued storage of the frozen culture is necessary, it should be stored in liquid nitrogen vapor phase and not at -70°C. Storage at -70°C will result in loss of viability.

- Thaw the vial by gentle agitation in a 37°C water bath. To reduce the possibility of contamination, keep the O-ring and cap out of the water. Thawing should be rapid (approximately 2 - 3 minutes).

- b) Remove the vial from the water bath as soon as the contents are thawed, and decontaminate by dipping in or spraying with 70% ethanol. All of the operations from this point on should be carried out under strict aseptic conditions.
- c) Transfer the vial contents to a centrifuge tube containing 5.0 mL complete culture medium and spin at approximately 176 x g for 5 minutes. Discard supernatant.
- d) Resuspend cell pellet with the recommended recovery medium. And dispense into appropriate culture dishes.
- e) Incubate the culture at 37°C in a suitable incubator. A 5% CO₂ in air atmosphere is recommended if using the medium described on this product sheet.

Cell Freezing

Freezing Medium: 90% FBS+10% DMSO

- a) Centrifuge at 176 x g for 3 minutes to collect cells.
- b) Resuspend the cells in pre-cooled freezing medium and adjust the cell density to 5E6 cells/mL.
- c) Aliquot 1 mL into each vial.
- d) Place the vial in a controlled-rate freezing container and store at -80°C for at least 1 day, then transfer to liquid nitrogen as soon as possible.

Cell passage

Growth medium: F12K+10% FBS+1% P.S+100 µg/mL Hygromycin+4 µg/mL Puromycin

For the first 1 to 2 passages post-resuscitation, use the recovery medium. Once the cells have stabilized, switch to a growth medium.

- a) Remove and discard culture medium.
- b) Briefly rinse the cell layer with PBS to remove all traces of serum that contains trypsin inhibitor.
- c) Add 1.0 mL of 0.25% (w/v) Trypsin-EDTA solution to dish and observe cells under an inverted microscope until cell layer is dispersed (usually within 2 to 3 minutes at 37°C).
- d) Note: To avoid clumping do not agitate the cells by hitting or shaking the flask while waiting for the cells to detach. Cells that are difficult to detach may be placed at 37°C to facilitate dispersal.
- e) Add 2.0 mL of growth medium to mix well and aspirate cells by gently pipetting.
- f) After centrifugation, resuspend the pellet and add appropriate aliquots of the cell suspension to new culture vessels.
- g) Incubate cultures at 37°C.

Subcultivation Ratio: A subcultivation ratio of 1:4 - 1:5 is recommended

Medium Renewal: Every 2 to 3 days

Notes

- a) After the stabilization of the cell condition, there will be fewer dead cells post-passage, the cell growth rate will tend to stabilize, cell morphology will become uniform, and the cells will appear robust.

Sequence

ITGB7 P26010-1

MVALPMVLVLLLVL SRGESELD AKIPSTGDATEWRNPHLSMLGSCQPAPSCQKCILSHPSCAWCKQLNFTAS
 GEAEARRCARREELLARGCPLEEELEPRGQQEVLQDQPLSQGARGEGATQLAPQRVRVTLRPGEPQQLQVRF
 LRAEGYPVDLYYLMDSL SYSMKDDL ERVRQLGHALLVRLQEVTHSVRIGFGSFVDKTVLPFVSTVPSKLRHPC
 PTRLERCQSPFSFHHVLSLTGDAQAFEREVGRQSVSGNLDSPEGGFDAILQAALCQEIQGWRNVSRLLVFTSD
 DTFHTAGDGLGGIFMPSDGHCHLDSNGLYSRSTEFDYPSVGQVAQALSAANIQPIFAVTS AALPVYQELSKL
 IPKSAVGELEDSSNVVQLIMDAYNSLSSTVTLEHSSLPPGVHISYESQCEGPEKREGKAEDRGQCNHVRINQT
 VTFWVSLQATHCLPEPHLLRLRALGFSEELIVELHTLDCNCSDTQPQAPHCS DGQGHLCGVCSCAPGRLG
 RLCECSVAELSSPDLESGCRAPNGTGPLCSGKGHCQCGRCS CSGQSSGHLCECDDAS CERHEGILCGGFGRQC
 CGVCHCHANRTGRACECSGDMDCISPEGGLCSGHGRCKCNRCQCLDGYYGALCDQCPGCKTPCERHRDC
 AECGAFRTGPLATNCSTACAHTNVTLALAPILDDGWCKERTLDNQLFFFLVEDDARGTVVLRVVRPQEKGAD
 HTQAIVLGCVGGIVAVGLGLVLA YRLSVEIYDRREYSRFEKEQQQLNWKQDSNPLYKSAITTTINPRFQEADS
 PTL

ITGA4 P13612-1

MAWEARREPGPRRAAVRETVMLLLCLGVPTGRPYNVDTESALLYQGPHTLFGYSVVLHSHGANRWLLVG
 APTANWLANASVINPGAIYRCRIGKNPGQTCEQLQLGSPNGEPCGKTCLEERDNQWLGVTL SRQPGENGSI V
 TCGHRWKNIFYIKNENKLPTGGCYGVPPDLRTELSKRIAPCYQDYVKKFGENFASCQAGISSFYTKDLIVMGA
 PGSSYWTGSLFVYNITTKYKAFLDKQNQVKFGSYLGYSVGAGHFRSQHTTEVVGGAPQHEQIGKAYIFSID
 EKELNILHEMKGKKLGSYFGASVCAVDLNADGFSDLLVGAPMQSTIREEGRVFVYINS GSGAVMNAMETNL
 VGSDKYAARFGESIVNLGDIDNDGFEDVAIGAPQEDDLQGAIIYNGRADGISSTFSQRIEGLQISKLSMFGQ
 SISGQIDADNNGYVDVA V GAFRSDSAVLLRTRPVVIVDASLHPESVNR TKFDCVENGWPSVCIDLTLCF SYK
 GKEVPGYIVLFYNMSLDVNRKAESPFRYFSSNGTSDVITGSIQVSSREANCRTHQAFMRKDV RDILTPIQIEA
 AYHLGPHVISKRSTEEFPPLQPI LQQKKEKDIMKKTINFARFCAHENSADLQVSAKIGFLKPHENKTYLAVGS
 MKTLMNLVSLFNAGDDAYETTLHV KLPVGLYFIKILELEEKQINCEVTDNSGVVQLDCSIGYIYVDHLSRIDIS
 FLLDVSSLSRAEEDLSITVHATCENEEEMDNLKHRSVTVAIPLKYEVKLT VHGFVNPTSFVYGSNDENEPETC
 MVEKMNLTFHVINTGNSMAPNVSV EIMVPNSFSPQTDKLFNILDVQTTTGECHFENYQ RVCAL EQQKSAMQ
 TLKGIVRFLSKTDKRLLYCIKADPHCLNFLCNFGKMESGKEASVHIQLEGRPSILEMDETSALKFEIRATGFPEP
 NPRVIELNKDENVAHV LLEGLHHQRPKRYFTIVISSSLLLGLIVLLLISYVMWKAGFFKRQYKSILQEENRRD
 SWSYINSKSNDD

Related Products

IL-23	
H_IL-23 Reporter 293 Cell Line	H_IL-23 Reporter 293 DDX35TM Cell Line
Cynomolgus_IL-23R HEK-293 Cell Line	H_IL-23R HEK-293 Cell Line
H_IL-23R IL12RB1 HEK-293 Cell Line	Membrane bound H_IL-23 CHO-K1 Cell Line
Anti-IL23A hIgG1 Reference Antibody (Gusebio)	Anti-IL23A hIgG1 Reference Antibody (Risbio)
Anti-IL-23R hIgG1 Antibody(5D4)	
Biotinylated Human IL-23A&IL-12B Heterodimer Protein; His-Avi Tag	Cynomolgus IL-23A & Human IL-12B Heterodimer Protein; His Tag

Cynomolgus IL-23A & Mouse IL-12B Heterodimer Protein; His Tag	Cynomolgus IL-23R Protein; hFc Tag
Human IL-23A & Mouse IL-12B Heterodimer Protein; His Tag	Human IL-23A&IL-12B Heterodimer Protein; His Tag
Human IL-23R Protein; hFc Tag	Human IL-23R Protein; His Tag
Mouse IL-23A&IL-12B Heterodimer Protein; His Tag	
TNF:TNFR2:TNFR1	
H_TNFR2 Null Reporter Cell Line	H_TNFR2 Reporter Jurkat Cell Line
H_TNFR2 Reporter V2 Cell Line	Cynomolgus_TNFRSF1B(TNFR2) CHO-K1 Cell Line
H_TNFR1 CHO-K1 Cell Line	H_TNFRSF1B(TNFR2) CHO-K1 Cell Line
H_TNFRSF1B(TNFR2) HEK-293 Cell Line	Membrane Bound H_TNF α CHO-K1 Cell Line
Membrane Bound H_TNF α (cleavage-resistant) CHO-K1 Cell Line	
Anti-H_TNFRSF1B(TNFR2) hIgG1 Antibody(UC2.3.8)	Anti-TNFR1 hIgG1 Antibody(Atrosab)
Anti-TNF- α hIgG1 Reference Antibody (Adabio)	
Cynomolgus TNF alpha Protein; His Tag	Cynomolgus TNFR2 Protein; His Tag
Human TNF alpha Protein; hFc Tag	Human TNF alpha Protein; His Tag
Human TNFR1 Protein; hFc Tag	Human TNFR1 Protein; His Tag
Human TNFR2 Protein; hFc Tag	Human TNFR2 Protein; His Tag
TL1A:DR3(TNFRSF25)	
H_TNFRSF25(DR3) Reporter Jurkat Cell Line	H_TNFSF15(TL1A) Reporter Cell Line
Mouse_TNFRSF25(DR3) Reporter Jurkat Cell Line	Cynomolgus_TNFSF15(TL1A) HEK-293 Cell Line
H_TNFRSF25(DR3) CHO-K1 Cell Line	H_TNFRSF25(DR3) HEK-293 Cell Line
H_TNFSF15(TL1A) CHO-K1 Cell Line	H_TNFSF15(TL1A) HEK-293 Cell Line
Mouse_TNFSF15(TL1A) HEK-293 Cell Line	
Anti-H_TNFSF15(TL1A) hIgG1 Antibody(PF-06480605)	Anti-H_TNFSF15(TL1A) hIgG1 Antibody(Tulisokibart、PRA-023)
Anti-H_TNFSF15(TL1A) hIgG4 Antibody	Anti-TL1A hIgG1 Reference Antibody (Duvbio)
Anti-TL1A hIgG1 Reference Antibody (Tulbio)	Anti-TNFRSF25(DR3) hIgG1 Antibody(PTX-35)
Biotinylated Cynomolgus TL1A Protein; His-Avi Tag	Biotinylated Human TL1A Protein; His-Avi Tag
Cynomolgus TL1A Protein; His Tag	Human TL1A Protein; His Tag
ITGA4 ITGB7	
H_MADCAM1 CHO-K1 Cell Line	H_MADCAM1 HEK-293 Cell Line
H_ α E β 7 K562 Cell Line	
Anti-Integrin α 4 β 7 hIgG1 Reference Antibody (Vedobio)	

License Agreement:

By purchasing and using this cell line product, the user voluntarily agrees to accept and abide by the following policies:

- This cell line product is restricted to research use only and shall not be used for any commercial purposes.

- This product is strictly prohibited from being used in the diagnosis or treatment of human or animal diseases, and shall not be directly used in experiments involving humans.
- Users and their contractors engaged for their benefit may use this material and its derivatives only within the agreed research scope; modification of the material is not permitted, nor may it be distributed, sold, transferred, or otherwise provided to any other entity (including affiliates).
- If use beyond the above scope is required, prior written permission from Genomeditech (Shanghai) Co.,Ltd. must be obtained. For details, please contact Genomeditech (Shanghai) Co.,Ltd.

Genomeditech