

# Product Sheet

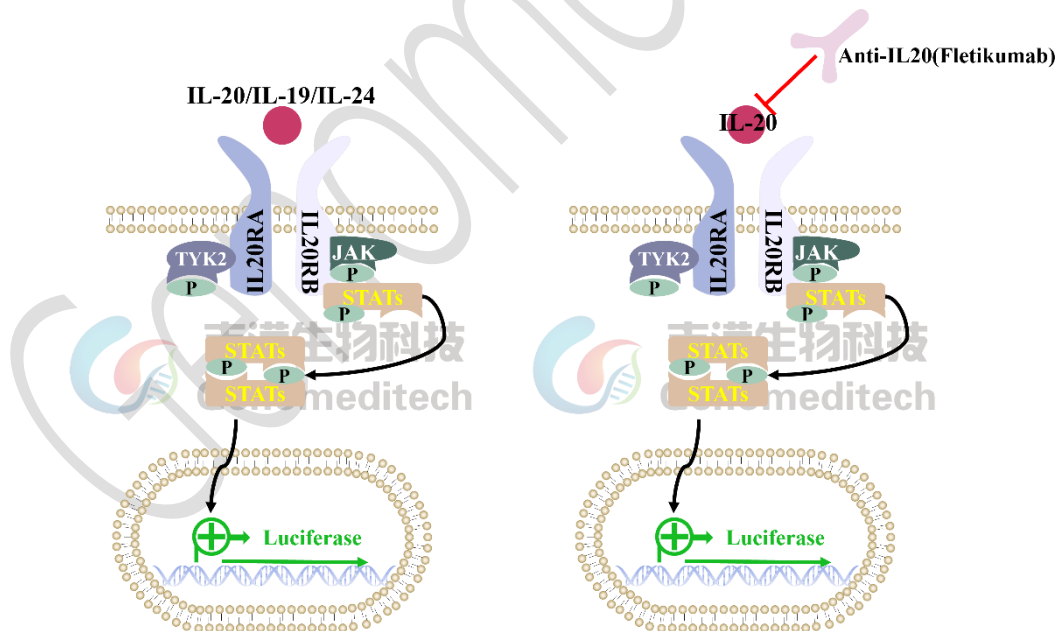
## H\_IL19 IL20 IL24 Reporter 293 Cell Line

Catalog number: GM-C41369

Version 3.3.1.260527

IL-19, IL-20, and IL-24 all belong to the IL-10 cytokine family and primarily mediate their biological effects by activating the JAK-STAT signaling pathway. IL-19, IL-20, and IL-24 initiate signal transduction through binding to the IL-20R1/IL-20R2 (IL-20RA/IL-20RB) receptor complex. This receptor engagement activates intracellular Janus kinases (JAK1 and TYK2), which in turn promote the phosphorylation of STAT3 as the main transcription factor, leading to its nuclear translocation and regulation of various genes associated with epithelial barrier function, cell survival, proliferation, and chronic inflammation. As key "epithelial alarmins," IL-19, IL-20, and IL-24 collectively participate in tissue remodeling and inflammatory amplification loops in pathological processes such as psoriasis, rheumatoid arthritis, and inflammatory bowel disease.

H\_IL19 IL20 IL24 Reporter 293 Cell Line is a clonal stable 293 cell line constructed using lentiviral technology, constitutive expression of the IL20RA, IL20RB gene and it endogenously expresses IL10RB, along with signal-dependent expression of a luciferase reporter gene. When a ligand binds to its receptor, it activates downstream signaling pathways, leading to the expression of luciferase. The luciferase activity measurement indicates the activation level of the signaling pathway and can thus be used to evaluate the in vitro effects of related drugs.



## Specifications

<b>Quantity</b>	5E6 Cells per vial, 1 mL
<b>Product Format</b>	1 vial of frozen cells
<b>Shipping</b>	Shipped on dry ice
<b>Storage Conditions</b>	Liquid nitrogen immediately upon receipt
<b>Recovery Medium</b>	DMEM+10% FBS+1% P.S
<b>Growth medium</b>	DMEM+10% FBS+1% P.S+4 µg/mL Blasticidin+400 µg/mL G418+125 µg/mL Hygromycin+0.75 µg/mL Puromycin
<b>Note</b>	None
<b>Freezing Medium</b>	90% FBS+10% DMSO
<b>Growth properties</b>	Adherent
<b>Growth Conditions</b>	37°C, 5% CO <sub>2</sub>
<b>Mycoplasma Testing</b>	The cell line has been screened to confirm the absence of Mycoplasma species.
<b>Safety considerations</b>	Biosafety Level 2
<b>Note</b>	It is recommended to expand the cell culture and store a minimum of 10 vials at an early passage for potential future use.

## Materials

Reagent	Manufacturer/Catalogue No.
DMEM	Gibco/C11995500BT
Fetal Bovine Serum	ExCell/FSP500
Pen/Strep	Thermo/15140-122
Blasticidin	Genomeditech/ <a href="#">GM-040404</a>
G418	Genomeditech/ <a href="#">GM-040402</a>
Hygromycin	Genomeditech/ <a href="#">GM-040403</a>
Puromycin	Genomeditech/ <a href="#">GM-040401</a>
Recombinant Human IL-20 Protein	SinoBiological/13060-HNAE
IL-19 Protein, Human	UA BIOSCIENCE/UA040152
Recombinant Human IL-24 Protein (His Tag)	SinoBiological/12265-H08H
Human IL-22 Protein; His Tag	Genomeditech/ <a href="#">GM-88080RP</a>
Fletikumab (anti-IL-20)	aladdin/Ab170642
PE anti-human CD210b (IL-10RB) Antibody	Biolegend/396803
GMOne-Step 2.0 Luciferase Reporter Gene Assay Kit	Genomeditech/ <a href="#">GM-040513</a>

## Figures

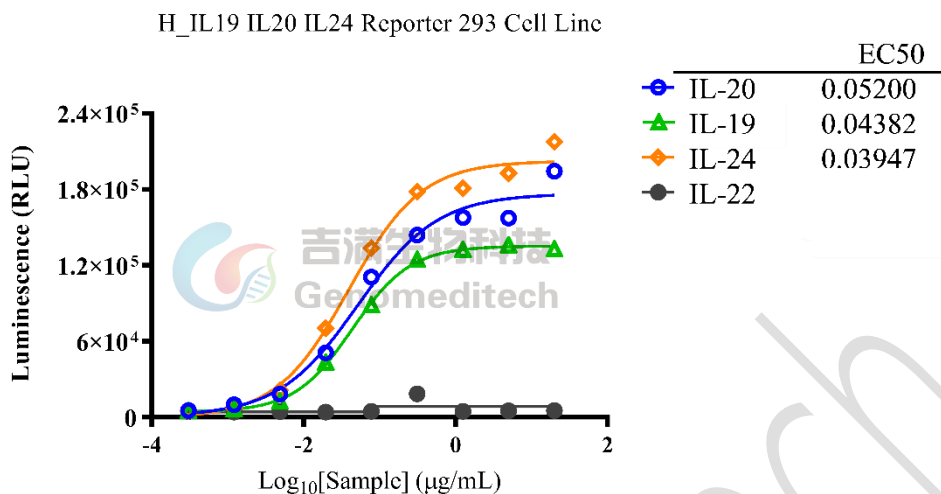


Figure 1 | Response to human IL-20, IL-19, IL-24 and IL-22 protein. The H\_IL19 IL20 IL24 Reporter 293 Cell Line (Cat. GM-C41369) at a concentration of 1.5E4 cells/well (96-well format) was stimulated with serial dilutions of Recombinant Human IL-20 Protein (SinoBiological/13060-HNAE), IL-19 Protein, Human (UA BIOSCIENCE/UA040152), Recombinant Human IL-24 Protein (His Tag) (SinoBiological/12265-H08H) and Human IL-22 Protein; His Tag (Cat. GM-88080RP) in assay buffer (DMEM + 1% FBS + 1% P.S) for 16 hours. The firefly luciferase activity was measured using the Luciferase Reporter Assay Kit (Genomeditech). The maximum induction folds of IL20, IL19, IL24 were approximately [45.5], [32.3] and [49.8]. Data are shown by drug mass concentration.

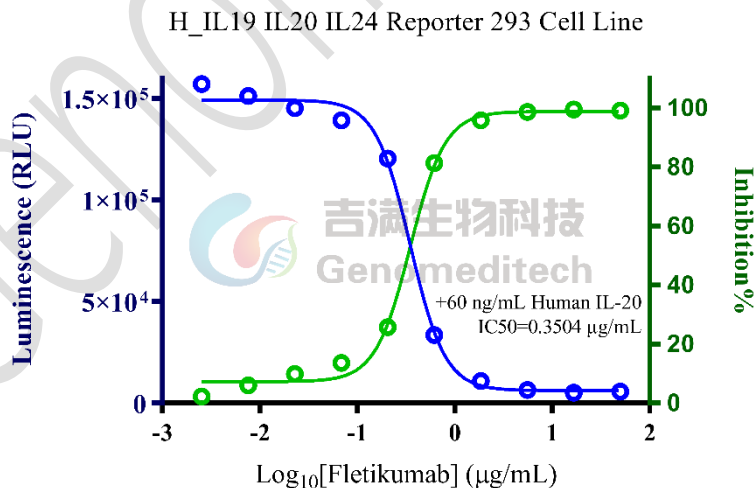


Figure 2 | Inhibition of Human IL-22 Protein-induced reporter activity by Fletikumab (anti-IL-20). Serial dilutions of Fletikumab (anti-IL-20) (aladdin/Ab170642) were incubated with 60 ng/mL of Recombinant Human IL-20 Protein (SinoBiological/13060-HNAE) for 1 hour in assay buffer (DMEM + 1% FBS + 1% P.S). After pre-incubation, add the mixture to the H\_IL19 IL20 IL24 Reporter 293 Cell Line (Cat. GM-C41369) at a density of 1.5E4 cells/well in a 96-well format, and incubate for 16 hours. Firefly luciferase activity was measured using the Luciferase

Reporter Assay Kit (Genomeditech) (left Y-axis, relative luminescence units, RLU), with inhibition percentages shown on the right Y-axis. Data are shown by drug mass concentration.

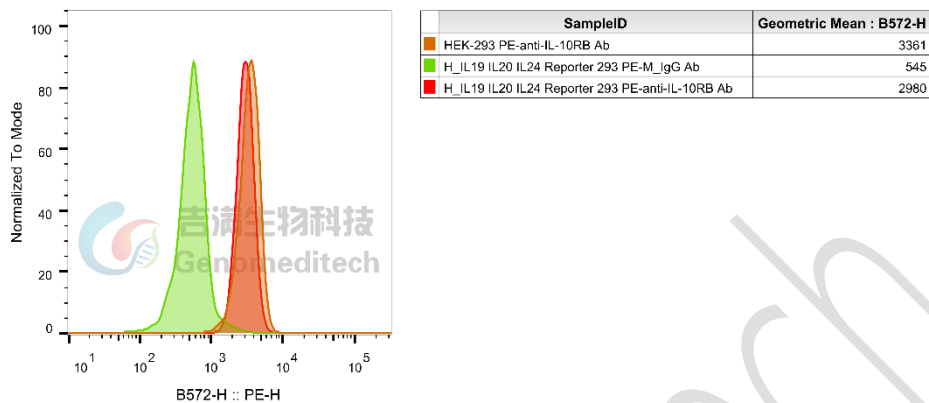


Figure 3 | H\_IL19 IL20 IL24 Reporter 293 Cell Line (Cat. GM-C41369) was determined by flow cytometry using PE anti-human CD210b (IL-10RB) Antibody (Biolegend/396803).

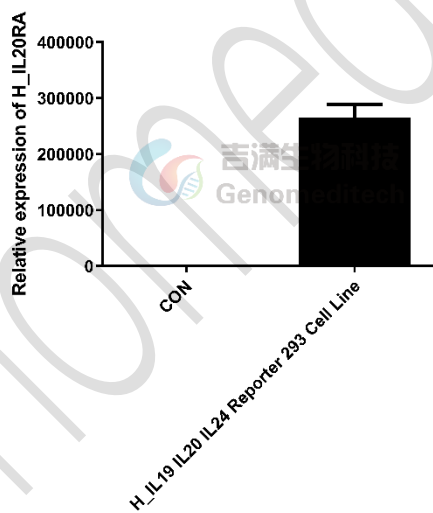


Figure 4 | The mRNA expression levels of H\_IL20RA in the H\_IL19 IL20 IL24 Reporter 293 Cell Line (Cat. GM-C41369) were determined by RT-qPCR.

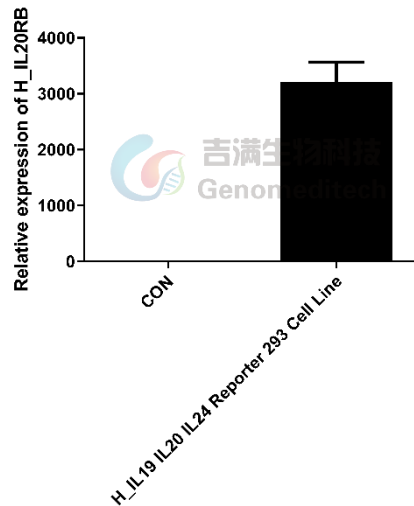


Figure 5 | The mRNA expression levels of H\_IL20RB in the H\_IL19 IL20 IL24 Reporter 293 Cell Line (Cat. GM-C41369) were determined by RT-qPCR.

## Cell Recovery

Recovery Medium: DMEM+10% FBS+1% P.S

To insure the highest level of viability, thaw the vial and initiate the culture as soon as possible upon receipt. If upon arrival, continued storage of the frozen culture is necessary, it should be stored in liquid nitrogen vapor phase and not at  $-70^{\circ}\text{C}$ . Storage at  $-70^{\circ}\text{C}$  will result in loss of viability.

- Thaw the vial by gentle agitation in a  $37^{\circ}\text{C}$  water bath. To reduce the possibility of contamination, keep the O-ring and cap out of the water. Thawing should be rapid (approximately 2 - 3 minutes).
- Remove the vial from the water bath as soon as the contents are thawed, and decontaminate by dipping in or spraying with 70% ethanol. All of the operations from this point on should be carried out under strict aseptic conditions.
- Transfer the vial contents to a centrifuge tube containing 5.0 mL complete culture medium and spin at approximately  $176 \times g$  for 5 minutes. Discard supernatant.
- Resuspend cell pellet with the recommended recovery medium. And dispense into appropriate culture dishes.
- Incubate the culture at  $37^{\circ}\text{C}$  in a suitable incubator. A 5%  $\text{CO}_2$  in air atmosphere is recommended if using the medium described on this product sheet.

## Cell Freezing

Freezing Medium: 90% FBS+10% DMSO

- Centrifuge at  $176 \times g$  for 3 minutes to collect cells.
- Resuspend the cells in pre-cooled freezing medium and adjust the cell density to  $5 \times 10^6$  cells/mL.
- Aliquot 1 mL into each vial.

- d) Place the vial in a controlled-rate freezing container and store at  $-80^{\circ}\text{C}$  for at least 1 day, then transfer to liquid nitrogen as soon as possible.

## Cell passage

Growth medium: DMEM+10% FBS+1% P.S+4  $\mu\text{g}/\text{mL}$  Blasticidin+400  $\mu\text{g}/\text{mL}$  G418+125  $\mu\text{g}/\text{mL}$  Hygromycin+0.75  $\mu\text{g}/\text{mL}$  Puromycin

For the first 1 to 2 passages post-resuscitation, use the recovery medium. Once the cells have stabilized, switch to a growth medium.

- Subculturing is necessary when the cell density reaches 80%. It is recommended to perform subculturing at a ratio of 1:3 to 1:4 every 2-3 days. Ensure that the density does not exceed 80%, as overcrowding can lead to reduced viability due to compression.
- Remove and discard culture medium.
- Briefly rinse the cell layer with PBS to remove all traces of serum that contains trypsin inhibitor.
- Add 1.0 mL of 0.25% (w/v) Trypsin-EDTA solution to dish and observe cells under an inverted microscope until cell layer is dispersed (usually within 30 to 60 seconds at  $37^{\circ}\text{C}$ ).
- Note: To avoid clumping do not agitate the cells by hitting or shaking the flask while waiting for the cells to detach. Cells that are difficult to detach may be placed at  $37^{\circ}\text{C}$  to facilitate dispersal.
- Add 2.0 mL of growth medium to mix well and aspirate cells by gently pipetting.
- After centrifugation, resuspend the pellet and add appropriate aliquots of the cell suspension to new culture vessels.
- Incubate cultures at  $37^{\circ}\text{C}$ .

**Subcultivation Ratio: A subcultivation ratio of 1:3 - 1:4 is recommended**

**Medium Renewal: Every 2 to 3 days**

## Notes

- Upon initial thawing, a higher number of dead cells is observed, which is a normal phenomenon. Significant improvement is seen after adaptation. Once the cells reach a stable state, the number of dead cells decreases after subculturing and the cell growth rate becomes stable.
- Ensure that the cell density does not exceed 80%, as overcrowding may lead to reduced viability due to compression.

## Related Products

IL-22	
<a href="#">H_IL22RA IL10RB BAF3 Cell Line</a>	<a href="#">H_IL22 Reporter 293 Cell Line</a>
<a href="#">Cynomolgus_IL22R HEK-293 Cell Line</a>	<a href="#">H_IL22R CHO-K1 Cell Line</a>
<a href="#">H_IL22R HEK-293 Cell Line</a>	<a href="#">Mouse_IL22R HEK-293 Cell Line</a>
<a href="#">Cynomolgus_IL22 Reporter 293 Cell Line</a>	<a href="#">H_IL20 IL22 IL24 Reporter 293 Cell Line</a>
<a href="#">Anti-H_IL-22 hIgG1 Antibody(Fezakinumab)</a>	<a href="#">Anti-H_IL-22R1 hIgG1 Antibody(ARGX-112)</a>
<a href="#">Anti-IL-22RA hIgG1 Antibody (280.346.TSY)</a>	<a href="#">Anti-IL-22RA hIgG1 Reference Antibody (Temtobio)</a>

Biotinylated Human IL-22 Protein; His-Avi Tag	Human IL-22 Protein; His Tag
Human IL-22BP Protein; hFc Tag	Mouse IL-22RA1 Protein; His Tag

## License Agreement:

**By purchasing and using this cell line product, the user voluntarily agrees to accept and abide by the following policies:**

- This cell line product is restricted to research use only and shall not be used for any commercial purposes.
- This product is strictly prohibited from being used in the diagnosis or treatment of human or animal diseases, and shall not be directly used in experiments involving humans.
- Users and their contractors engaged for their benefit may use this material and its derivatives only within the agreed research scope; modification of the material is not permitted, nor may it be distributed, sold, transferred, or otherwise provided to any other entity (including affiliates).
- If use beyond the above scope is required, prior written permission from Genomeditech (Shanghai) Co.,Ltd. must be obtained. For details, please contact Genomeditech (Shanghai) Co.,Ltd.