

# Product Sheet

## H\_PVR(CD155) Raji Cell Line

Catalog number: GM-C09243

Version 3.3.1.250722

<b>Description</b>	H_PVR(CD155) Raji Cell Line is a clonal stable Raji cell line that constitutively expresses the human PVR(CD155) genes, constructed using transposon technology.
<b>Quantity</b>	5E6 Cells per vial, 1 mL
<b>Product Format</b>	1 vial of frozen cells
<b>Shipping</b>	Shipped on dry ice
<b>Storage Conditions</b>	Liquid nitrogen immediately upon receipt
<b>Target</b>	Human_PVR(CD155)
<b>Gene ID/Uniprot ID</b>	NP_006496.4
<b>Host Cell</b>	Raji
<b>Recovery Medium</b>	RPMI 1640+10% FBS+1% P.S
<b>Growth medium</b>	RPMI 1640+10% FBS+1% P.S+0.25 µg/mL Puromycin
<b>Note</b>	None
<b>Freezing Medium</b>	90% FBS+10% DMSO
<b>Growth properties</b>	Suspension
<b>Growth Conditions</b>	37°C, 5% CO <sub>2</sub>
<b>Mycoplasma Testing</b>	The cell line has been screened to confirm the absence of Mycoplasma species.
<b>Safety considerations</b>	Biosafety Level 2
<b>Note</b>	It is recommended to expand the cell culture and store a minimum of 10 vials at an early passage for potential future use.

## Materials

Reagent	Manufacturer/Catalogue No.
RPMI 1640	VivaCell/C3010-0500
Fetal Bovine Serum	ExCell/FSP500
Pen/Strep	Thermo/15140-122
Puromycin	Genomeditech/GM-040401
PE anti-human CD155 (PVR) Antibody	Biolegend/337609

## Figures

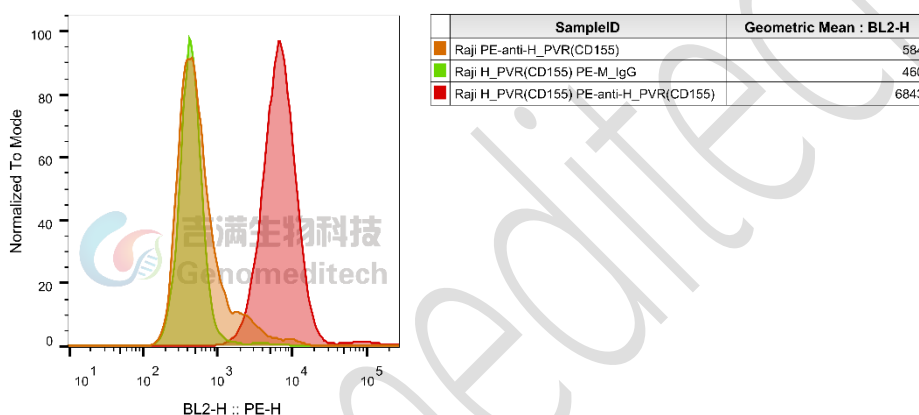


Figure 1 | H\_PVR(CD155) Raji Cell Line (Cat. GM-C09243) was determined by flow cytometry using PE anti-human CD155 (PVR) Antibody (Biolegend/337609).

## Cell Recovery

Recovery Medium: RPMI 1640+10% FBS+1% P.S

To insure the highest level of viability, thaw the vial and initiate the culture as soon as possible upon receipt. If upon arrival, continued storage of the frozen culture is necessary, it should be stored in liquid nitrogen vapor phase and not at -70°C. Storage at -70°C will result in loss of viability.

- Thaw the vial by gentle agitation in a 37°C water bath. To reduce the possibility of contamination, keep the O-ring and cap out of the water. Thawing should be rapid (approximately 2 - 3 minutes).
- Remove the vial from the water bath as soon as the contents are thawed, and decontaminate by dipping in or spraying with 70% ethanol. All of the operations from this point on should be carried out under strict aseptic conditions.
- Transfer the vial contents to a centrifuge tube containing 5.0 mL complete culture medium. And spin at approximately 176 x g for 5 minutes. Discard supernatant.
- Resuspend cell pellet with the recommended complete medium. And dispense the suspension into an appropriate culture flask and initially place the flask in an upright position after thawing.

- e) Incubate the culture at 37°C in a suitable incubator. A 5% CO<sub>2</sub> in air atmosphere is recommended if using the medium described on this product sheet.

## Cell Freezing

Freezing Medium: 90% FBS+10% DMSO

- Centrifuge at 176 x g for 3 minutes to collect cells.
- Resuspend the cells in pre-cooled freezing medium and adjust the cell density to 5E6 cells/mL.
- Aliquot 1 mL into each vial.
- Place the vial in a controlled-rate freezing container and store at -80°C for at least 1 day, then transfer to liquid nitrogen as soon as possible.

## Cell passage

Growth medium: RPMI 1640+10% FBS+1% P.S+0.25 µg/mL Puromycin

Approximately 48-72 hours after the initial thawing, the cells can be passaged for the first time. After this initial passage, the culture medium can be adjusted to growth medium supplemented with antibiotics. If cells are not passaged within 48 hours, it is recommended to add some fresh recovery medium and place the flask horizontally.

- When the cell density reaches 1 - 1.2E6 cells/mL, subculture the cells. Do not allow the cell density to exceed 1.2E6 cells/mL.
- It is recommended to use T-25 flasks for subculturing.
- These cells are suspension cells, and it is recommended to use the "half-medium change" method to maintain optimal cell conditions during passaging.
- During passaging, you can directly add fresh growth medium to the culture flask, gently pipette to resuspend the cells, and then transfer the cell suspension to a new T-25 flask for continued culture.

**Subcultivation Ratio: Maintain cultures at a cell concentration between 2.5E5 and 8E5 viable cells/mL.**

**Medium Renewal: Every 2 to 3 days**

## Notes

- These cells are sensitive to density, so please ensure that the cell density is maintained within an appropriate range during culture and subculturing.
- During the first passage, pay attention to the nutrient supply; if not subculturing, make sure to add fresh recovery medium every other day as needed.

## Sequence

PVR(CD155) NP\_006496.4

MARAMAAAWPLLLVALLVLSWPPP GTGDVVVQAPTQVPGFLGDSVTLPCYLQVPNMEVTHVSQLTWARH  
GESGSMVVFHQQTQGPSYSESKRLEFVAARLGAELRNASLRMFLRVEDEGNYTCLFVTFPQGSRSVDIWLRLV  
LAKPQNTAEVQKVQLTGEPVPMARCVSTGGRPPAQITWHS DLGGMPNTS QVPGFLSGT VTVTSLWILVPSSQ

VDGKNVTCKVEHESFEKPQLLTVNLTVYYPPPEVSISGYDNNWYLGQNEATLTCDARSNPEPTGYNWSTTMG  
PLPPFAVAQGAQLLIRPVDKPIINTTLCNVTNALGARQAELTVQVKEGPPSEHSGMSRNIIFLVLGILVFLILL  
GIGIYFYWSKCSREVLWHCHLCPSSSTEHASASANGHVSYSAVSRENSSSQDPQTEGTR\*

## Related Products

TIGIT:PVR:CD155:CD226	
<a href="#">H_TIGIT CD226 Reporter Jurkat Cell Line</a>	<a href="#">Cynomolgus_TIGIT CHO-K1 Cell Line</a>
<a href="#">H_CD226 CHO-K1 Cell Line</a>	<a href="#">H_PVR(CD155) CHO-K1 Cell Line</a>
<a href="#">H_TIGIT CHO-K1 Cell Line</a>	
<a href="#">Anti-H_Tigit hIgG1 Antibody(Vibostolimab)</a>	
<a href="#">Human TIGIT Protein; His Tag</a>	

## License Agreement:

**By purchasing and using this cell line product, the user voluntarily agrees to accept and abide by the following policies:**

- This cell line product is restricted to research use only and shall not be used for any commercial purposes.
- This product is strictly prohibited from being used in the diagnosis or treatment of human or animal diseases, and shall not be directly used in experiments involving humans.
- Users and their contractors engaged for their benefit may use this material and its derivatives only within the agreed research scope; modification of the material is not permitted, nor may it be distributed, sold, transferred, or otherwise provided to any other entity (including affiliates).
- If use beyond the above scope is required, prior written permission from Genomeditech (Shanghai) Co.,Ltd. must be obtained. For details, please contact Genomeditech (Shanghai) Co.,Ltd.