

# Product Sheet

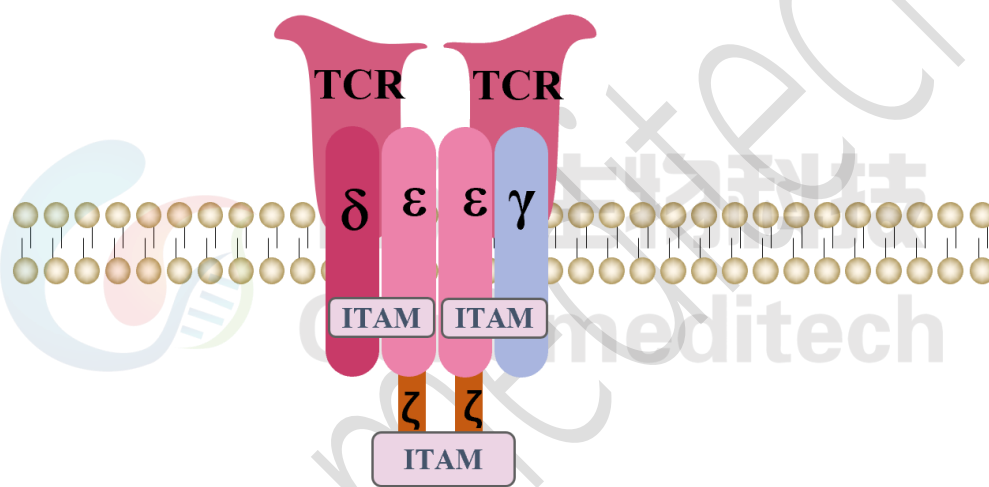
## H\_CD3 CHO-K1 Cell Line

Catalog number: GM-C32931

Version 3.3.1.260623

The CD3 complex, also known as the T3 complex, is a multimeric protein complex composed of four different polypeptide chains: epsilon ( $\epsilon$ ), gamma ( $\gamma$ ), delta ( $\delta$ ), and zeta ( $\zeta$ ). These chains assemble and function as three pairs of dimers:  $\epsilon\gamma$ ,  $\epsilon\delta$ , and  $\zeta\zeta$ . The CD3 protein complex is a defining feature of the T-cell lineage, thus anti-CD3 antibodies can be effectively used as markers for T cells.

H\_CD3 CHO-K1 Cell Line is a clonal stable CHO-K1 cell line constitutively expressing human CD3 complex.



## Specifications

<b>Quantity</b>	5E6 Cells per vial, 1 mL
<b>Product Format</b>	1 vial of frozen cells
<b>Shipping</b>	Shipped on dry ice
<b>Storage Conditions</b>	Liquid nitrogen immediately upon receipt
<b>Recovery Medium</b>	F12K+10% FBS+1% P.S
<b>Growth medium</b>	F12K+10% FBS+1% P.S+200 µg/mL G418+100µg/mL Hygromycin
<b>Note</b>	None
<b>Freezing Medium</b>	90% FBS+10% DMSO
<b>Growth properties</b>	Adherent
<b>Growth Conditions</b>	37°C, 5% CO <sub>2</sub>
<b>Mycoplasma Testing</b>	The cell line has been screened to confirm the absence of Mycoplasma species.
<b>Safety considerations</b>	Biosafety Level 2
<b>Note</b>	It is recommended to expand the cell culture and store a minimum of 10 vials at an early passage for potential future use.

## Materials

Reagent	Manufacturer/Catalogue No.
F12K	BOSTER/PYG0036
Fetal Bovine Serum	ExCell/FSP500
Pen/Strep	Thermo/15140-122
G418	Genomeditech/ <a href="#">GM-040402</a>
Hygromycin	Genomeditech/ <a href="#">GM-040403</a>
Anti-CD3 hIgG1 Antibody(CH2527)	Genomeditech/ <a href="#">GM-33037AB</a>
Anti-CD3 mIgG1 Antibody(SP34-2)	Genomeditech/GM-87919AB
Anti-CD3 epsilon hIgG1 Antibody [OKT-3 (muromonab)]	Genomeditech/ <a href="#">GM-51478AB</a>
FITC anti-human TCR α/β Antibody	Biolegend/306706
Anti-CD3 zeta/CD247 Antibody, Rabbit Polyclonal	Sinobiological/13142-T52
Purified anti-human/mouse CD3ε (activation epitope) Antibody	Biolegend/362701
CD3e/CD3g Recombinant Rabbit Monoclonal Antibody (4F5G4)	thermofisher/MA5-42744

## Figures

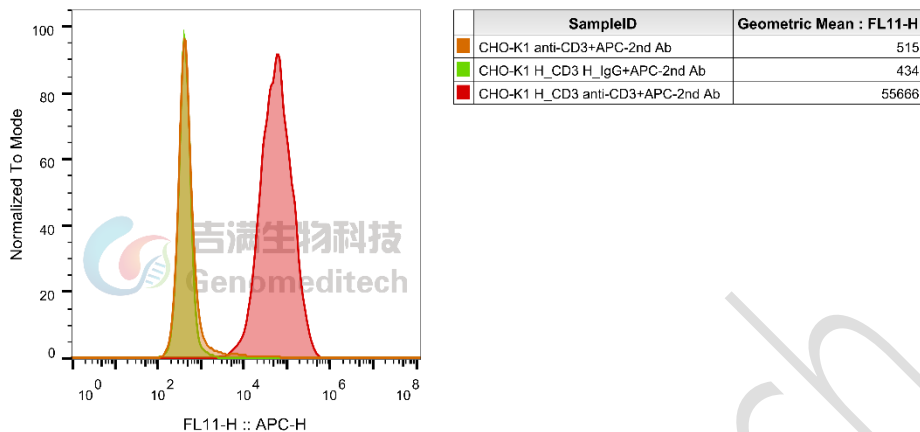


Figure 1 | H\_CD3 CHO-K1 Cell Line(Cat. GM-C32931) was determined by flow cytometry using Anti-CD3 hIgG1 Antibody(CH2527) (Cat. [GM-33037AB](#)).

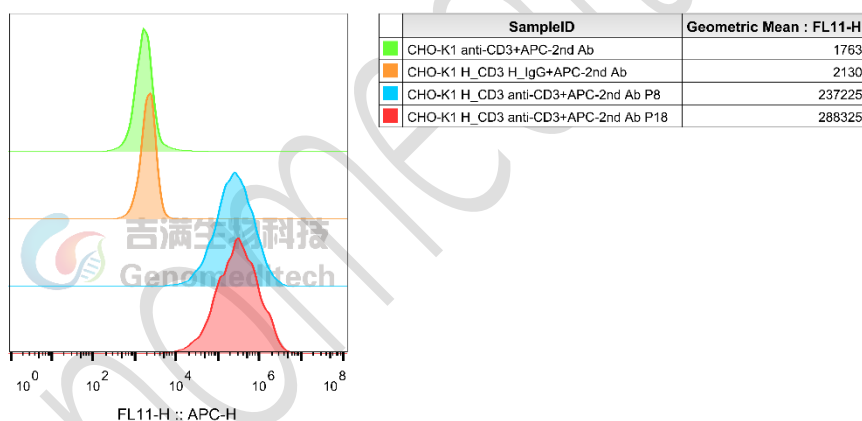


Figure 2 | The passage stability of the H\_CD3 CHO-K1 Cell Line (Cat. GM-C32931) was determined by flow cytometry using Anti-CD3 hIgG1 Antibody(CH2527)(Cat. [GM-33037AB](#)).

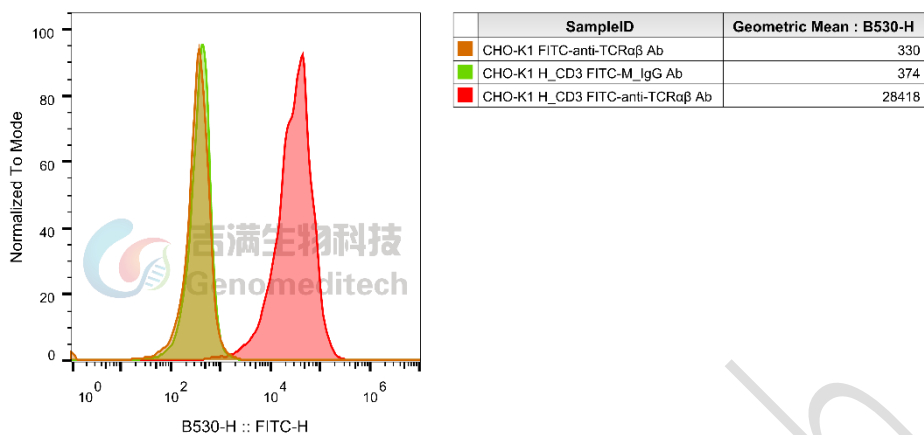


Figure 3 | H\_CD3 CHO-K1 Cell Line was determined by flow cytometry using FITC anti-human TCR  $\alpha/\beta$  Antibody (Biolegend/306706).

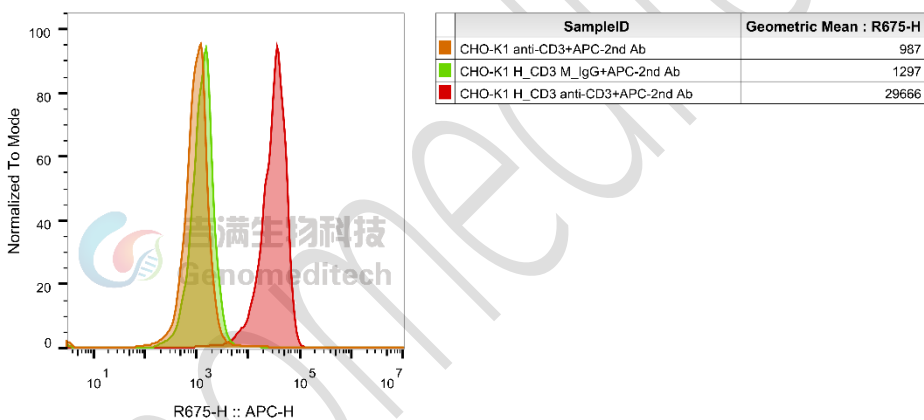


Figure 4 | H\_CD3 CHO-K1 Cell Line(Cat.GM-C32931) was determined by flow cytometry using Anti-CD3 mIgG1 Antibody(SP34-2) (Cat.GM-87919AB).

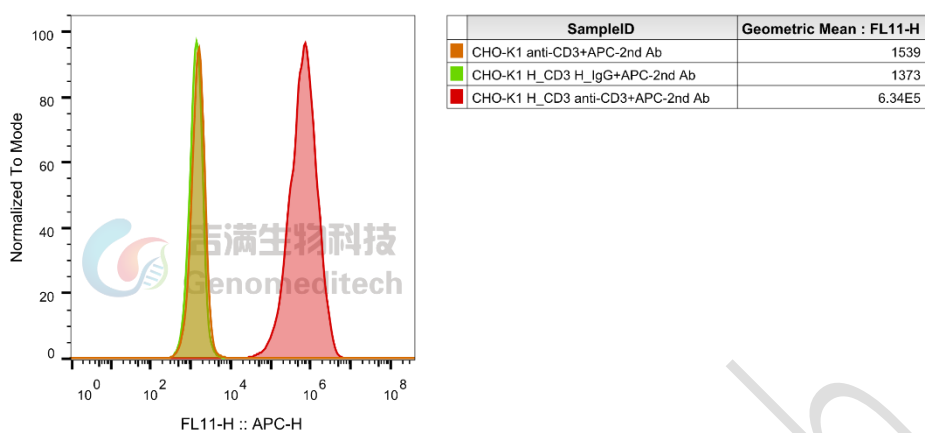


Figure 5 | H\_CD3 CHO-K1 Cell Line(Cat.GM-C32931) was determined by flow cytometry using Anti-CD3 epsilon hIgG1 Antibody [OKT-3 (muromonab)](Cat.GM-51478AB).

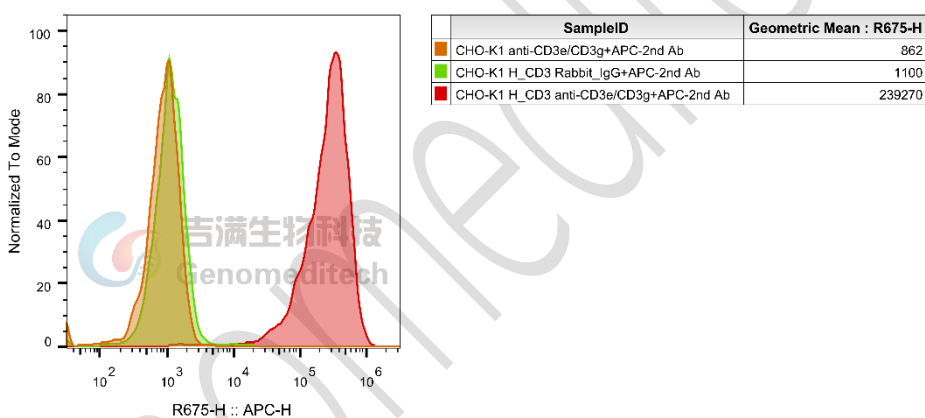
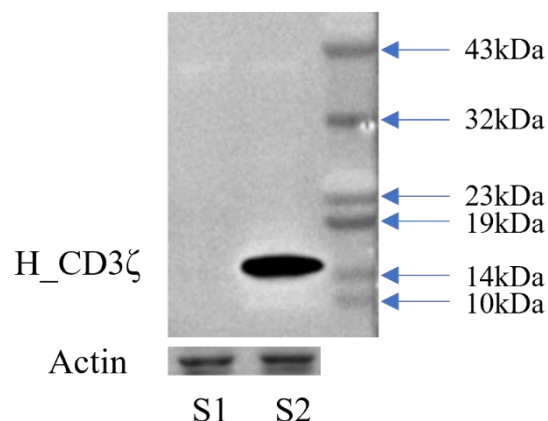
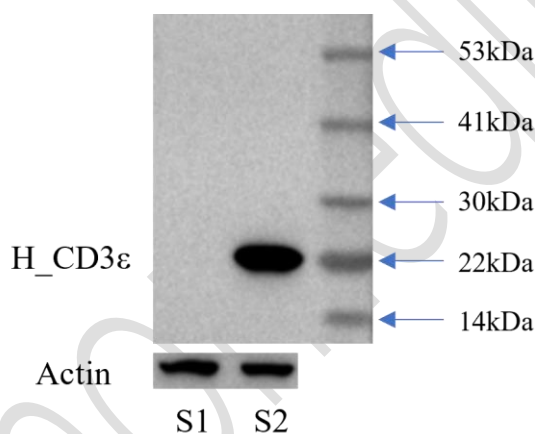


Figure 6 | H\_CD3 CHO-K1 Cell Line(Cat.GM-C32931) was determined by flow cytometry using CD3e/CD3g Recombinant Rabbit Monoclonal Antibody (4F5G4) (thermofisher/MA5-42744).



S1: Con      S2: H\_CD3 CHO-K1 Cell Line

Figure 7 | The protein expression levels of H\_CD3 $\zeta$  in the H\_CD3 CHO-K1 Cell Line(Cat. GM-C32931) were determined by Western blotting (WB).



S1: Con      S2: H\_CD3 CHO-K1 Cell Line

Figure 8 | The protein expression levels of H\_CD3 $\epsilon$  in the H\_CD3 CHO-K1 Cell Line(Cat. GM-C32931) were determined by Western blotting (WB).

## Cell Recovery

Recovery Medium: F12K+10% FBS+1% P.S

To insure the highest level of viability, thaw the vial and initiate the culture as soon as possible upon receipt. If upon arrival, continued storage of the frozen culture is necessary, it should be stored in liquid nitrogen vapor phase and not at -70°C. Storage at -70°C will result in loss of viability.

- a) Thaw the vial by gentle agitation in a 37°C water bath. To reduce the possibility of contamination, keep the O-ring and cap out of the water. Thawing should be rapid (approximately 2 - 3 minutes).

- b) Remove the vial from the water bath as soon as the contents are thawed, and decontaminate by dipping in or spraying with 70% ethanol. All of the operations from this point on should be carried out under strict aseptic conditions.
- c) Transfer the vial contents to a centrifuge tube containing 5.0 mL complete culture medium and spin at approximately 176 x g for 5 minutes. Discard supernatant.
- d) Resuspend cell pellet with the recommended recovery medium. And dispense into appropriate culture dishes.
- e) Incubate the culture at 37°C in a suitable incubator. A 5% CO<sub>2</sub> in air atmosphere is recommended if using the medium described on this product sheet.

## Cell Freezing

Freezing Medium: 90% FBS+10% DMSO

- a) Centrifuge at 176 x g for 3 minutes to collect cells.
- b) Resuspend the cells in pre-cooled freezing medium and adjust the cell density to 5E6 cells/mL.
- c) Aliquot 1 mL into each vial.
- d) Place the vial in a controlled-rate freezing container and store at -80°C for at least 1 day, then transfer to liquid nitrogen as soon as possible.

## Cell passage

Growth medium: F12K+10% FBS+1% P.S+200 µg/mL G418+100µg/mL Hygromycin

For the first 1 to 2 passages post-resuscitation, use the recovery medium. Once the cells have stabilized, switch to a growth medium.

- a) Remove and discard culture medium.
- b) Briefly rinse the cell layer with PBS to remove all traces of serum that contains trypsin inhibitor.
- c) Add 1.0 mL of 0.25% (w/v) Trypsin-EDTA solution to dish and observe cells under an inverted microscope until cell layer is dispersed (usually within 2 to 3 minutes at 37°C).
- d) Note: To avoid clumping do not agitate the cells by hitting or shaking the flask while waiting for the cells to detach. Cells that are difficult to detach may be placed at 37°C to facilitate dispersal.
- e) Add 2.0 mL of growth medium to mix well and aspirate cells by gently pipetting.
- f) After centrifugation, resuspend the pellet and add appropriate aliquots of the cell suspension to new culture vessels.
- g) Incubate cultures at 37°C.

**Subcultivation Ratio: A subcultivation ratio of 1:4 - 1:5 is recommended**

**Medium Renewal: Every 2 to 3 days**

## Notes

- a) After the stabilization of the cell condition, there will be fewer dead cells post-passage, the cell growth rate will tend to stabilize, cell morphology will become uniform, and the cells will appear robust.

## Related Products

CD28	
H_CD28 Reporter Jurkat Cell Line	Cynomolgus_CD28 CHO-K1 Cell Line
H_CD28 CHO-K1 Cell Line	H_CD28 HEK-293 Cell Line
H_CD28 KO Jurkat Cell Line	
Anti-CD28 hIgG4 Antibody(FR104)	Anti-H_CD28 hIgG4 Antibody(Theralizumab)
Anti-mouse CD28 Syrian Hamster IgG2 Antibody(37. 51)	
Human CD28 Protein; His Tag	
CD19	
H_CD19 KO Raji Cell Line	Cynomolgus_CD19 CHO-K1 Cell Line
Cynomolgus_CD19 HEK-293 Cell Line	H_CD19 CHO-K1 Cell line
H_CD19 HEK-293 Cell Line	Mouse_CD19 CHO-K1 Cell Line
Anti-CD19 hIgG1 Reference Antibody (Loncbio)	Anti-CD19×CD3 hIgG1 Antibody[PIT-565(CD58 K34A)]
Anti-H_CD19 hIgG1/hIgG2 Antibody(Tafasitamab)	
CD3	
Jurkat CD3-BsAb Reporter Cell Line	Cynomolgus_CD3 HEK-293 Cell Line
Cynomolgus_CD3E(Membrane Bound ECD) CHO-K1 Cell Line	H_CD3 HEK-293 Cell Line
H_CD3(TCR V2) CHO-K1 Cell Line	H_CD3(TCR V2) HEK-293 Cell Line
H_CD3D CD3E KO Jurkat Cell Line	H_CD3E KO Jurkat Cell Line
H_CD3E(Membrane Bound ECD) CHO-K1 Cell Line	Mouse_CD3 HEK-293 Cell Line
Anti-CD19×CD3 hIgG1 Antibody[PIT-565(CD58 K34A)]	Anti-CD3 epsilon hIgG1 Antibody [OKT-3 (muromonab)]
Anti-CD3 hIgG1 Antibody(CH2527)	Anti-CD3×CD20 hIgG1 Bispecific Antibody (Epcobio)
Anti-CD3×FCRL5 hIgG1 Bispecific Antibody(cevostamab)	Anti-CD3E×BCMA hIgG4 Reference Antibody (Tecbio)
Anti-CD3E×DLL3 hIgG1 Bispecific Antibody(Tarlabio)	Anti-CD3E×MUC17 hIgG1 Bispecific Antibody(Vepsitbio)
Anti-mouse CD3ε mIgG2a Antibody(145-2C11)	
CD2	
H_CD2 KO Jurkat(CD3-) Cell Line	CD3-CD2-tsAb Reporter Jurkat(CD58 KO) Cell Line
Cynomolgus_CD2 CHO-K1 Cell Line	H_CD2 CHO-K1 Cell Line
Anti-CD19×CD3 hIgG1 Antibody[PIT-565(CD58 K34A)]	Anti-CD2 hIgG1 Antibody(BTI-322)

## License Agreement:

**By purchasing and using this cell line product, the user voluntarily agrees to accept and abide by the following policies:**

- This cell line product is restricted to research use only and shall not be used for any commercial purposes.
- This product is strictly prohibited from being used in the diagnosis or treatment of human or animal diseases, and shall not be directly used in experiments involving humans.

- Users and their contractors engaged for their benefit may use this material and its derivatives only within the agreed research scope; modification of the material is not permitted, nor may it be distributed, sold, transferred, or otherwise provided to any other entity (including affiliates).
- If use beyond the above scope is required, prior written permission from Genomeditech (Shanghai) Co.,Ltd. must be obtained. For details, please contact Genomeditech (Shanghai) Co.,Ltd.

Genomeditech